



Baildon Street | Deptford, London, SE8 4BQ



2



1



1

Price on Application

Leasehold

EPC = C

ROBINSON-JACKSON
Our service will *move* you

Baildon Street, Deptford

Robinson Jackson are pleased to offer for sale this large two bedroom ground floor apartment set in a sought after development nearby to Deptford and New Cross. Viewings are highly recommended!

.....

Property Features

- 2 Bedrooms
- Living Room
- Kitchen
- Bathroom



Interior

Entrance Hall

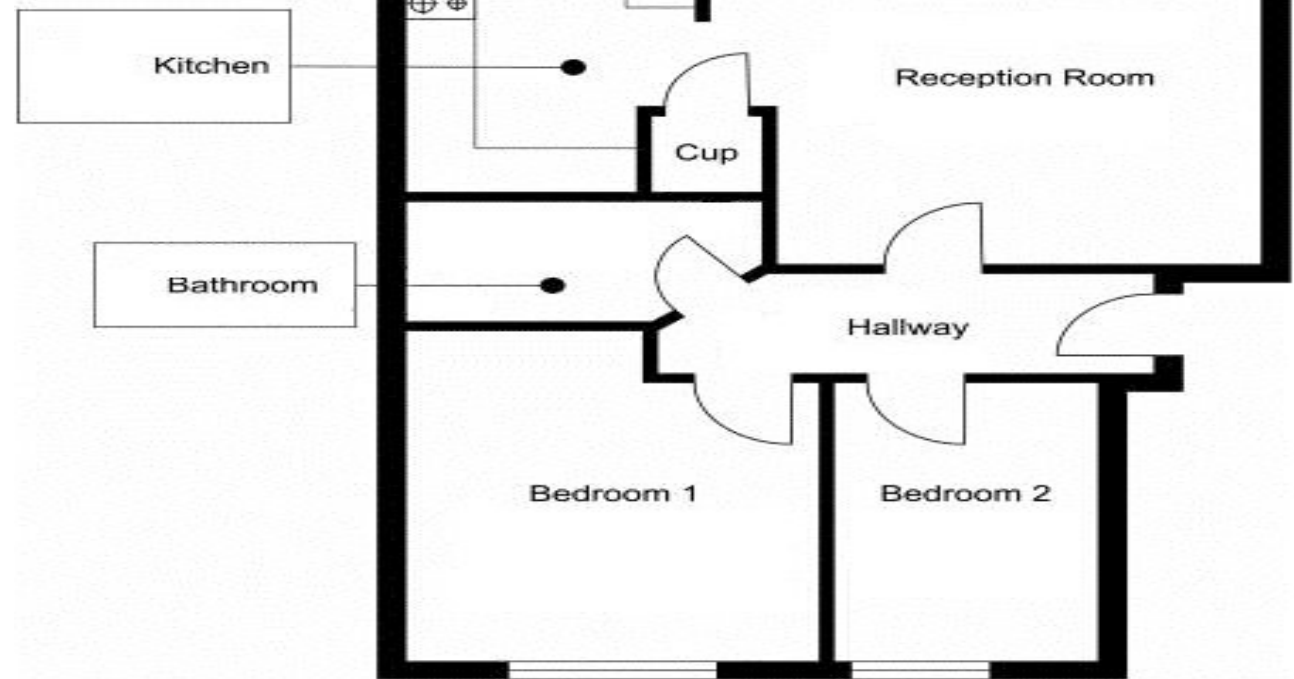
Living Room 4.32m x 3.5m (14'2" x 11'6")

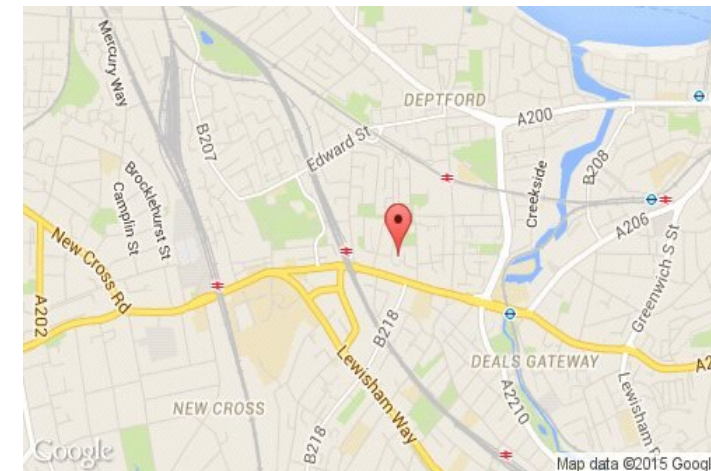
Kitchen 3.56m x 2.03m (11'8" x 6'8")

Bedroom One 3.18m x 2.95m (10'5" x 9'8")

Bedroom Two 3.18m x 1.93m (10'5" x 6'4")

Bathroom 2.54m x 1.35m (8'4" x 4'5")





These particulars do not form part of any offer or contract and must not be relied upon as statements or representations of fact. Any areas, measurements or distances are approximate. The text, photographs and plans are for guidance only. It should not be assumed that the property has all the necessary planning, building regulations or other consents and that the agent has not tested any services, equipment or facilities. References to tenure are based on information supplied by the seller. Buyers should verify all information for themselves upon inspection and also by a solicitor/surveyor prior to a legal commitment to purchase. Photos and images are subject to copyright law.

Additional Information

Proudly presented by **ROBINSON-JACKSON**

For more information or to book a viewing please contact our local branch on 0207 647 7711

159-161 New Cross Road

New Cross

London

SE14

newcross@robinson-jackson.com

VALUATIONS | SALES & LETTINGS | INVESTMENTS | MORTGAGES