



St. Peters Close | Swanscombe, Kent, DA10 0BD

 3  1  2 Offers in excess of £375,000 Freehold

ROBINSON-JACKSON
Our service will *move* you

St. Peters Close, Swanscombe

Robinson Jackson are delighted to present this stunning three bedroom home situated on a quiet cul-de-sac. Immaculately presented, this home features a through lounge, fitted kitchen, conservatory, downstairs WC, three generous bedrooms and first floor bathroom. If you like to spend your time in the garden then you are going to love what this low maintenance haven has to offer with a stunning composite decked area, astroturf & rear access leading to the garage. Call our Robinson Jackson team to find out more and arrange your viewing.

Property Features

- Three Bedrooms
- Conservatory
- Downstairs WC
- Low Maintenance Garden
- Parking & Garage
- Walking Distance to Swanscombe & Ebbsfleet Stations



Interior

Entrance Hall Composite entrance door. Tiled floor. Radiator with decorative cover. Cupboard housing meters.

Cloakroom Frosted double glazed window to front. Tiled walls & floor. Low level WC. Vanity wash hand basin. Heated towel rail.

Living Room Double glazed bay window to front. Double glazed sliding doors to rear (to conservatory). Carpet. Two radiators with decorative covers. Remote control electric Optimyst fire. Stairs to first floor.

Kitchen Double glazed window to rear. Tiled floor & walls. Range of wall & base units with complementary work surfaces. Integrated gas hob & electric oven. Integrated fridge freezer. Integrated microwave. Plumbed for washing machine. Cupboard housing boiler. Under cupboard lighting.

Conservatory Double glazed patio doors to side. Double glazed windows to rear & side. Vinyl flooring. Remote control electric heater.

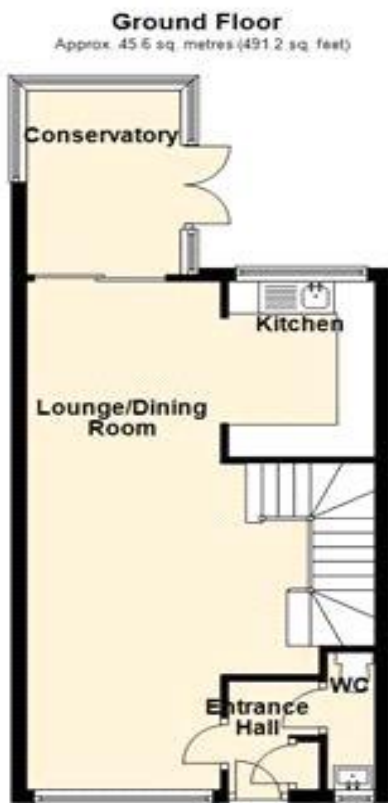
Landing Carpet. Airing cupboard. Access to loft (partially boarded with pull down ladder and lighting).

Master Bedroom Double glazed window to front. Carpet. Radiator with decorative cover. Fitted wardrobes.

Bedroom Two Double glazed window to rear. Carpet. Radiator with decorative cover.

Bedroom Three Double glazed window to rear. Vinyl flooring. Radiator with decorative cover. Fitted storage unit with desk.

Bathroom Frosted double glazed window to front. Tiled floor & walls. Low level WC. Vanity wash hand basin. Jacuzzi bath with shower over. Heated towel rail. Extractor fan.



Total area: approx. 82.3 sq. metres (885.6 sq. feet)





Exterior

Front: Lawn. Flower beds. Off street parking for one car. Outside tap in cupboard to front.

Rear Garden: Approximately 30'. Composite decking. Astro turf. Shed. Rear access. Outside tap. Outside light. Power point.

Garage en block.

Additional Information

Dartford Borough Council - Tax Band D

Total floor area: 73 sq. metres

Property Location

St. Peters Close, Swanscombe, Kent, DA10 0BD



FOR MORE INFORMATION
CONTACT US TODAY.

01322 624440

Robinson Jackson
39 High Street,
Swanscombe
Kent,
DA10 0AG

swanscombe@robinson-jackson.com

