



Allwood Close | Sydenham, London, SE26 4JP



£285,000

Leasehold

ROBINSON-JACKSON
Our service will *move* you

Allwood Close, Sydenham

Modern purpose built flat offered chain free with two double bedrooms, leasehold, residents parking, double glazing, laminate flooring, ample storage, entry phone, in need of TLC offering fantastic potential set within a popular location, ideal for Sydenham Station, conveniently located for local high street shops and amenities, Bell Green Retail Park and the award winning Mayow Park

Property Features

- Council Tax: B
- EPC Rating: D
- Two Double Bedrooms
- Modern Purpose Built Flat
- Chain Free
- Leasehold
- Residents Parking
- Double Glazing
- Laminate Flooring Where Stated
- Ample Storage
- Entry Phone
- In Need of TLC
- Fantastic Potential
- Ideal for Sydenham Station



Interior

Entrance Hall Built in cupboard, laminate flooring

Lounge Double glazed window to rear, laminate flooring, radiator

Kitchen Double glazed window to rear, wall and base units, laminate work surface, stainless steel sink, integrated hob, oven and extractor, space for fridge/freezer, washing plumbed for, vinyl flooring

Master Bedroom Double glazed window to rear, laminate flooring, radiator

Second bedroom Double glazed window to rear, laminate flooring, radiator

Bathroom Panelled bath, wash hand basin, vinyl flooring, radiator

Separate WC Low flush WC, vinyl flooring

Exterior

Residents parking

Additional Information

Double glazing

Central heating

Laminate flooring where stated

Ample storage

Entry phone

Chain free

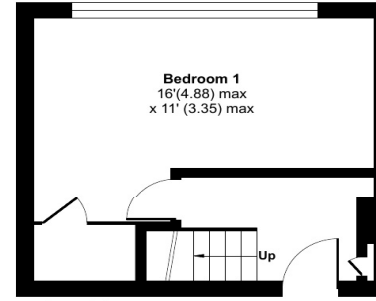
Leasehold

In need of TLC

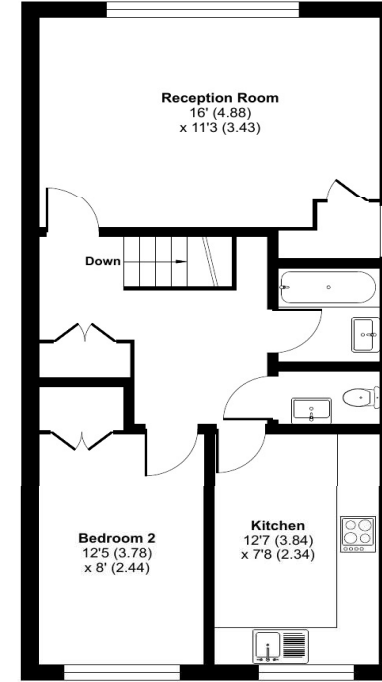
Fantastic potential

Ideal for Sydenham Station

Conveniently located for local high street shops and amenities, Bell Green Retail Park and the award winning Mayow Park



FIRST FLOOR



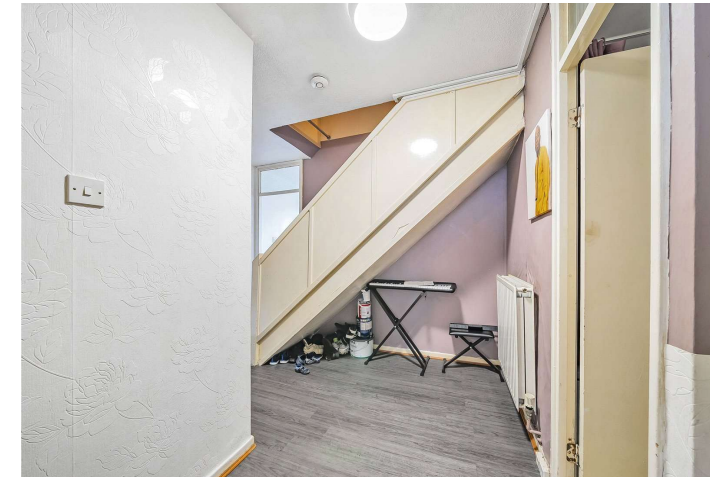
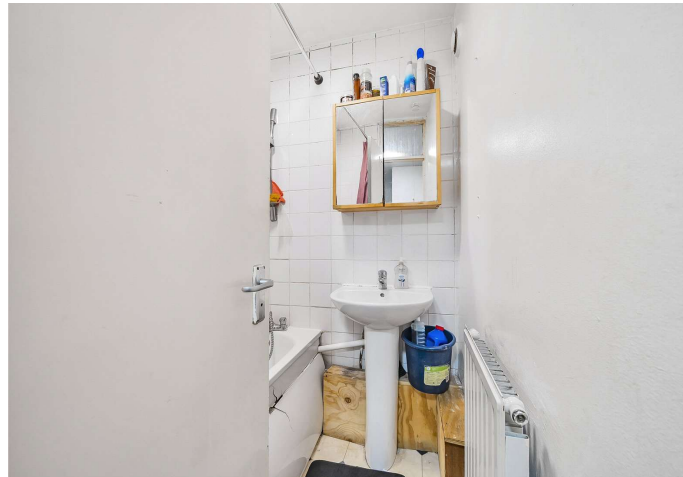
SECOND FLOOR

Approximate Area = 792 sq ft / 73.5 sq m

For identification only - Not to scale



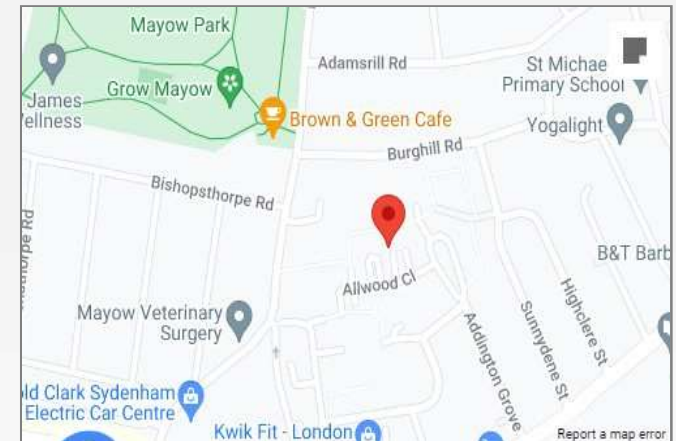
Floor plan produced in accordance with RICS Property Measurement Standards incorporating International Property Measurement Standards (IPMS2 Residential). © nchecon 2024.





Property Location

Allwood Close, Sydenham, London, SE26 4JP



Horniman
Museum & Gardens

Crystal
Palace

Canada Water
Station

Train to
London Bridge

*All distances from branch postcode. Train time from nearest station.

**FOR MORE INFORMATION
CONTACT US TODAY.**

020 8776 6660

Robinson Jackson
256 Kirkdale,
Sydenham,
London SE26 4NL

sydenham@robinson-jackson.com

