



Westmount Road | London, SE9 1YA



Guide Price £280,000 to £300,000.

Leasehold

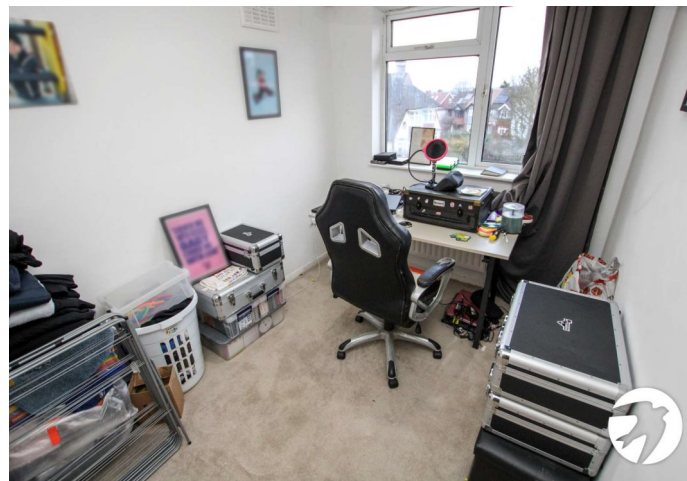
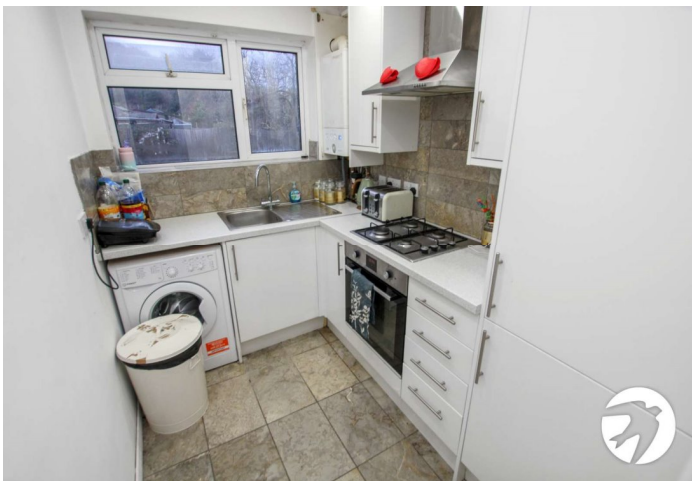
ROBINSON-JACKSON
Our service will *move* you

Westmount Road, London

Robinson Jackson are delighted to present this blank canvas first floor two bedroom maisonette with private garden benefiting from no onward chain situated conveniently for Eltham High Street and station.

Property Features

- Chain free
- Two bedrooms
- Maisonette
- New lease on completion
- Private garden
- Convenient for High Street & station



Interior

Garden Mainly laid to lawn, shed

Entrance Hall Entrance door, entry phone, stairs to first floor, radiator

Lounge 4.57m x 3.05m (15' x 10') Double glazed window to front, radiator, feature fireplace housing electric fire, carpet

Kitchen 2.54m x 1.85m (8'4" x 6'1") Double glazed window to rear, wall and base units with work surfaces above, stainless steel sink and drainer unit with mixer tap, integrated oven and hob, stainless steel extractor hood, integrated fridge/freezer, plumbing for washing machine, part tiled walls, tiled floor

Bedroom 1 4.22m x 2.51m (13'10" x 8'3") Double glazed window to rear, radiator, carpet

Bedroom 2 2.87m x 2.29m (9'5" x 7'6") Double glazed window to front, radiator, carpet

Bathroom Double glazed window to side, 'L' shaped panelled bath with shower above and glass screen, vanity wash hand basin with cupboard below, concealed cistern wc, tiled walls, tiled floor, towel rail

Exterior

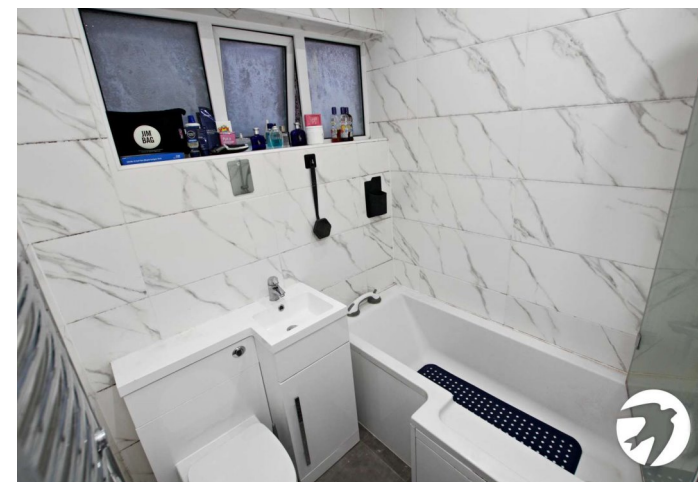
Leasehold Information

Time remaining on lease: New lease on completion

Ground Rent: TBC

Service Charge: TBC

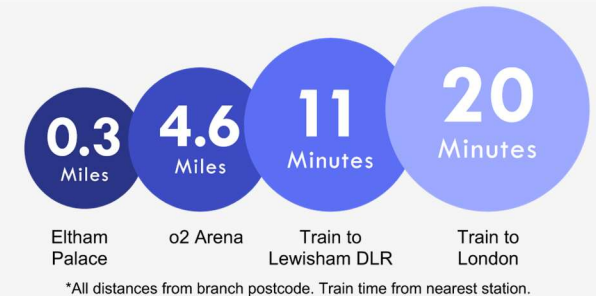
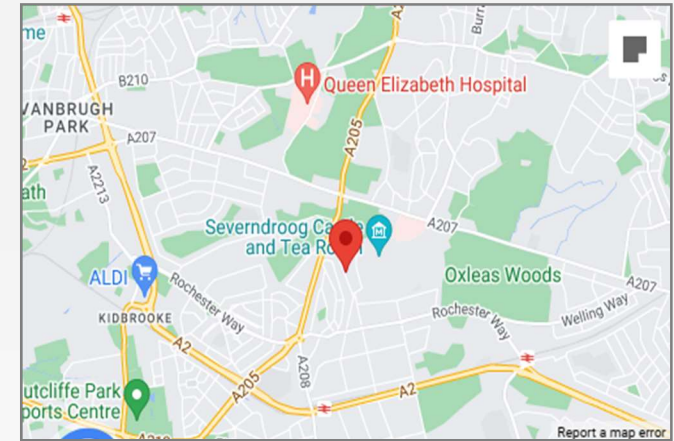
Ground Rent Review Date: TBC





Property Location

Westmount Road, London, SE9 1YA



Additional Information

Eltham is a popular town in the Royal Borough of Greenwich, with £2 million recently been spent on a High Street revitalisation programme, including a new cinema and sky bar complex.

There's a mainline train station offering a direct route to London and the magnificent Art Deco Eltham Palace. The Heritage Restaurant & Bar at the Tudor Barn, a modern leisure centre, the Bob Hope Theatre and Well Hall Pleasaunce can all be found in the town.

- Council Tax: C
- EPC Rating: To be confirmed

**FOR MORE INFORMATION
CONTACT US TODAY.**

020 8859 9600

Robinson Jackson
2-4 Court Yard,
Eltham,
London SE9 5PZ

eltham@robinson-jackson.com

