



Kilmorie Road | Forest Hill, London, SE23 2SS



OIEO £350,000

Share of Freehold

EPC = E

**ROBINSON-JACKSON**  
Our service will *move* you



## Kilmorie Road, Forest Hill

Wonderful first floor period conversion flat offered chain free with two double bedrooms, share of freehold, integrated appliances and ample storage set within a popular location, ideal for Forest Hill Station, High Street and Horniman Museum & Gardens

### Property Features

- Two Double Bedrooms
- Period Conversion Flat
- Chain Free
- Share of Freehold
- First Floor
- Ample Storage
- Ideal for Forest Hill Station, High Street and Horniman Museum & Gardens



## Interior

### Communal Entrance

**Lounge** Double glazed window to front, wood flooring, radiator

**Kitchen** Range of wall and base units, laminate work surface, stainless steel sink unit, integrated stainless steel oven and hob, space for fridge/freezer, tiled flooring

**Bedroom One** Double glazed window to rear, wood flooring, radiator

**Bedroom Two** Double glazed window to rear, wood flooring, radiator

**Bathroom** Walk in shower cubicle, wash hand basin, low flush WC, laminate flooring, heated towel rail, extractor fan

## Additional Information

Double glazing

Central heating

Ample storage

First floor

Chain free

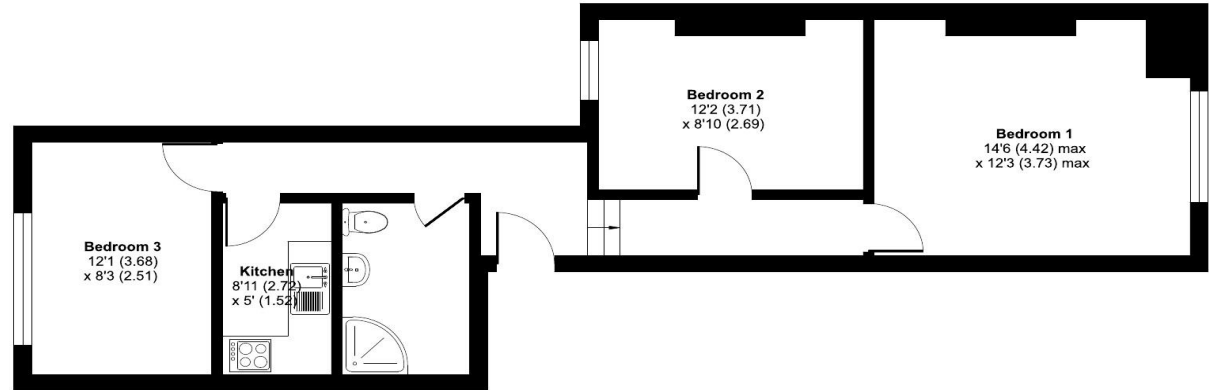
Share of freehold

Integrated appliances

Attractive period building

Ideal for Forest Hill Station, High Street and Horniman Museum & Gardens

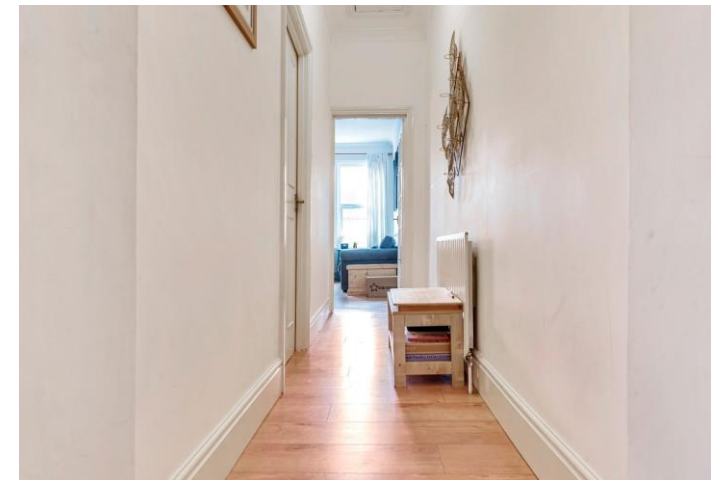
Approximate Area = 610 sq ft / 57 sq m  
For identification only - Not to scale



GROUND FLOOR



Floor plan produced in accordance with RICS Property Measurement Standards incorporating International Property Measurement Standards (IPMS2 Residential). ©nichecom 2022. Produced for Robinson Jackson.

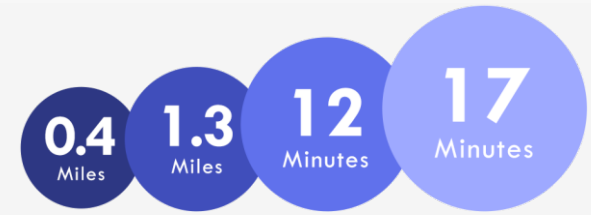
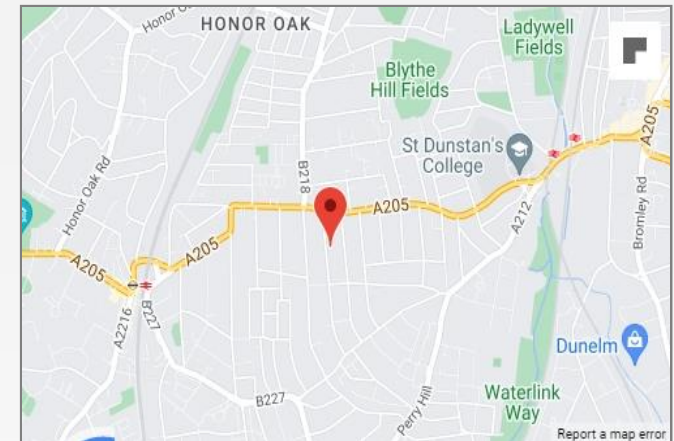






## Property Location

Kilmorie Road, Forest Hill, London, SE23 2SS



Horniman Museum & Gardens    Lordship Lane    Train to Canada Water    Train to London Bridge

\*All distances from SE23 3HB postcode. Train time from Forest Hill station.

**FOR MORE INFORMATION  
CONTACT US TODAY.**

020 8776 6660  
Robinson Jackson  
256 Kirkdale,  
Sydenham,  
London SE26 4NL  
sydenham@robinson-jackson.com



These particulars do not form part of an offer or contract and must not be relied upon as statements or representation of fact. Any areas, measurements, journey times or distances are approximate. The text, images, photographs and plans are for guidance only and are not necessarily comprehensive. It should not be assumed that the property has all necessary planning, building regulation or other consents and we have not tested any services, equipment or facilities. References to tenure are based on information supplied by the seller. Buyer should verify all information themselves by inspection or otherwise prior to a legal commitment to purchase. Photos and images are subject to copyright.