



Halsbrook Road | London, SE3 8QY



Asking Price £400,000

Freehold

EPC = C

ROBINSON-JACKSON
Our service will *move* you

Halsbrook Road, London

A well presented three bedroom end of terrace family home benefitting a modern fitted kitchen, generous garden and off street parking. Convenient for shops, schools, bus routes and Kidbrooke station.

Property Features

- 14ft Lounge
- 14ft Modern Fitted Kitchen
- Ground Floor Shower Room
- First Floor WC
- Off Street Parking
- Convenient Location



Interior

Entrance Hall: Under stairs storage and wood style laminate flooring.

Lounge: 4.34m x 3.53m (14'3" x 11'7") Wood style laminate flooring.

Kitchen: 4.14m x 1.78m (13'7" x 5'10") Fitted with a range of modern wall and base units with complimentary work surfaces. Integrated oven, hob and filter hood. Space for appliances, part tiled walls and tiled flooring. Access to garden.

Ground Floor Shower Room: 1.65m x 1.47m (5'5" x 4'10") Fitted with a modern three piece suite comprising a vanity wash hand basin with storage under, low level WC and walk in shower cubicle. Tiled flooring and part tiled walls.

Landing: Access to loft and carpet as fitted.

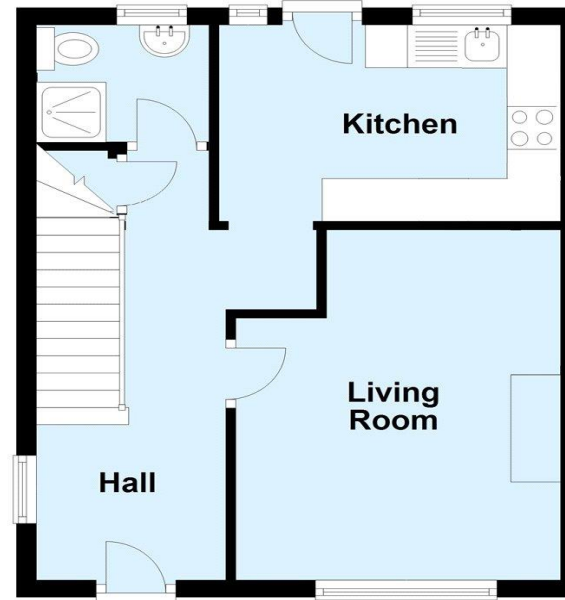
Bedroom 1: 3.38m x 2.87m (11'1" x 9'5") Carpet as fitted.

Bedroom 2: 3.96m x 2.82m (13' x 9'3") Carpet as fitted.

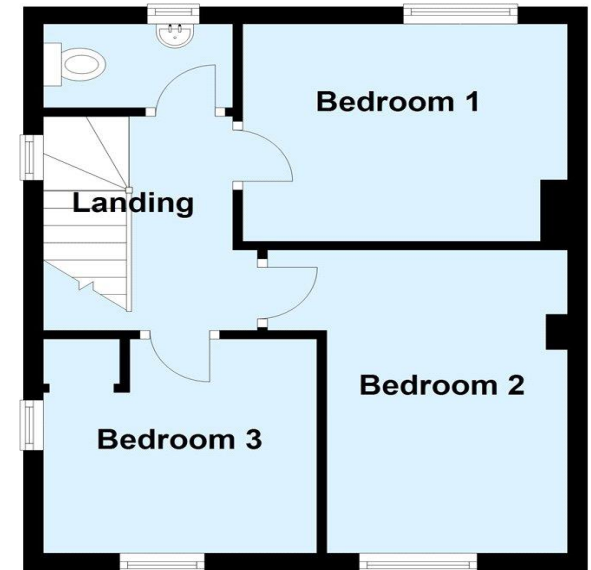
Bedroom 3: 2.84m x 2.44m (9'4" x 8') Built in shelving and carpet as fitted.

WC: Fitted with a low level WC and vanity wash hand basin with storage under. Tiled flooring & part tiled walls.

Ground Floor



First Floor



Plan produced using PlanUp.





Property Location

Halsbrook Road, London, SE3 8QY



Exterior

Rear Garden: Mainly laid to lawn with flower and shrub borders. Paved patio area with gate to the side.

Off Street Parking: Driveway to front for two cars.

**FOR MORE INFORMATION
CONTACT US TODAY.**

020 8859 9600
Robinson Jackson
2-4 Court Yard,
Eltham,
London SE9 5PZ
eltham@robinson-jackson.com

