

Canterbury Court Canterbury Road ME10 4JE

A well presented one bedroom ground floor apartment conveniently situated on the outskirts of Sittingbourne town centre

- One bedroom
- Ground floor
- Allocated parking
- Modern kitchen
- No Chain
- Close to town centre

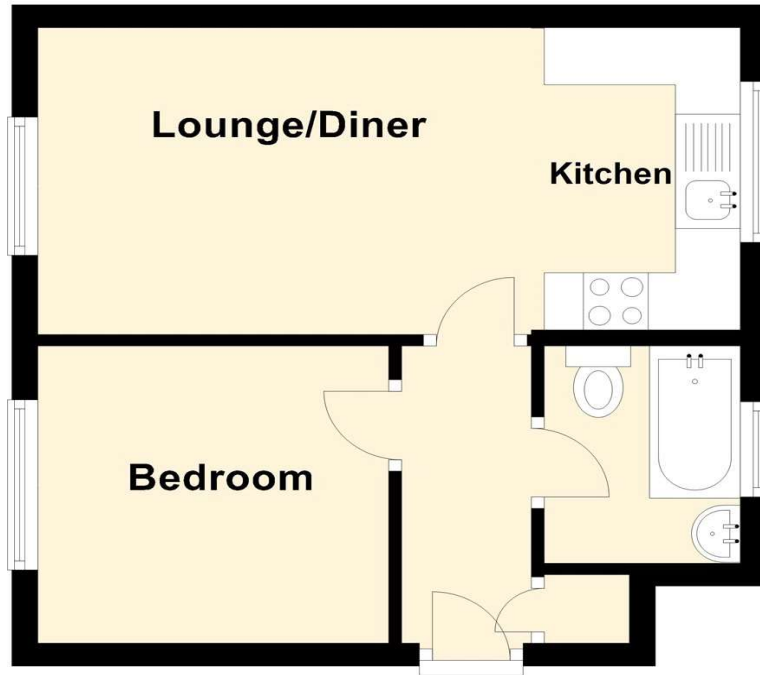
Guide Price £120,000 to £130,000



Leasehold

EPC Rating: B

ROBINSON MICHAEL & JACKSON
Our service will *move* you



**FOR MORE INFORMATION
CONTACT US TODAY.**

01795 479999

Robinson Michael & Jackson
38 West Street,
Sittingbourne,
Kent ME10 1AP

sittingbourne@robinson-jackson.com



Interior

Lounge: Window to rear. Radiator.

Kitchen: Window to front. Wall and base units. Space for fridge/freezer and washing machine. Oven and hob with extractor hood.

Bathroom: Bath with shower. Pedestal wash hand basin. Low level w/c. Window to front.

Bedroom 1: Window to rear. Radiator.

COUNCIL TAX BAND A