



Braidwood Road | Catford, London, SE6 1QY



Asking Price: £600,000

Freehold

ROBINSON-JACKSON
Our service will *move* you

Braidwood Road, Catford

A great opportunity to acquire this delightful end of terrace house situated on Braidwood Road. Boasting a bright and spacious feel throughout and offered in good condition the property comprises three bedrooms, ensuite shower to main bedroom, spacious through lounge, reception, modern kitchen and bathroom. Additional benefits include private garden with side access, off-street parking, no onward chain and potential to extend (subject to planning permission).

Property Features

- Council Tax: C
- EPC Rating: D
- No Onward Chain
- End of Terrace
- Off-Street Parking
- Private Garden
- Three Bedrooms
- Through Lounge/Reception



Interior

Hall Understair storage, radiator, carpet.

Lounge/Dining Room 6.86m x 3.43m (22'6" x 11'3")

Double glazed bay window to front, double glazed window to rear, radiators, wood flooring.

Kitchen 2.1m x 2.08m (6'11" x 6'10") Double glazed window to rear, UPVC door to garden, range of wall and base units with work surface over, tiled splash back, stainless steel sink with mixer tap, fitted oven, hob and extractor fan, integrated washing machine, wall fixed combi boiler, tiled flooring.

Ground Floor Bathroom 1.75m x 1.5m (5'9" x 4'11")

Double glazed window to rear, panel enclosed bath with mixer tap and shower attachment, wall fixed hand basin, low level W.C., tiled flooring.

Bedroom 1 5.18m max x 3.45m max (17' max x 11'4" max) Double glazed windows to front, fitted wardrobes, radiator, carpet.

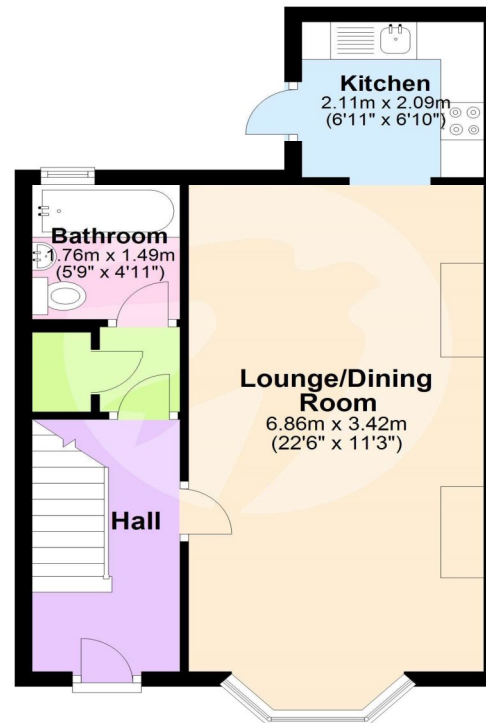
Bedroom 2 3.28m x 2.51m (10'9" x 8'3") Double glazed window to rear, radiator, carpet.

Bedroom 3 2.57m x 1.9m (8'5" x 6'3") Double glazed window to rear, loft hatch, radiator, carpet.

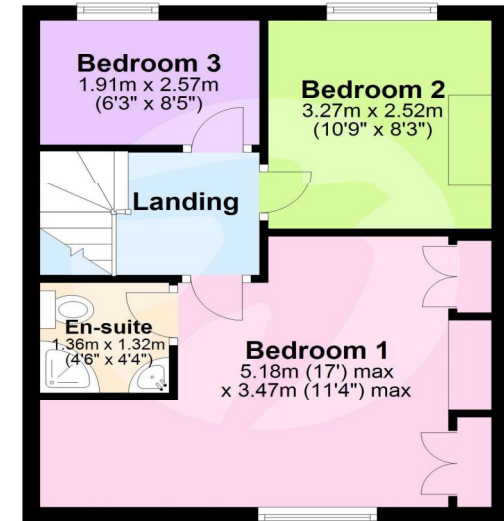
Exterior

Rear Garden Panel wooden fencing, paved area to front, mainly laid to lawn, shed, water tap, side access.

Ground Floor



First Floor



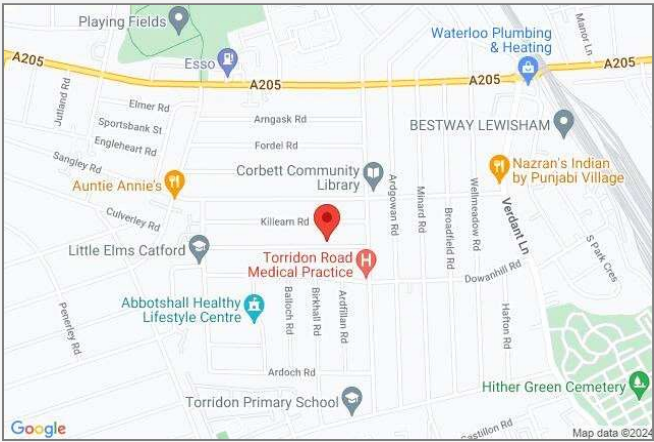
This floor plan is for illustrative purposes only. It is not drawn to scale. Measurements are approximate.
Plan produced using PlanUp.





Property Location

Braidwood Road, Catford, London, SE6 1QY



Location

Catford is growing in popularity among commuters as journeys from its two mainline stations can take as little as 10 minutes to Central London.

The Broadway Theatre is an impressive Art Deco building, with a regular programme of shows and events. Catford's other premium attraction is Mountsfield Park – one of London's best open spaces and home of the annual People's Day. Catford's Black Cat sculpture remains a well-loved landmark.

Additional Information

Local Authority: London Borough of Lewisham
Council Tax: Band C (£1,712 pa)

FOR MORE INFORMATION CONTACT US TODAY.

020 8698 1234
Robinson Jackson
87 Rushey Green,
Catford
SE6 4AF
jamie.nicol@robinson-jackson.com

These particulars do not form part of an offer or contract and must not be relied upon as statements or representation of fact. Any areas, measurements, journey times or distances are approximate. The text, images, photographs and plans are for guidance only and are not necessarily comprehensive. It should not be assumed that the property has all necessary planning, building regulation or other consents and we have not tested any services, equipment or facilities. References to tenure are based on information supplied by the seller. Buyer should verify all information themselves by inspection or otherwise prior to a legal commitment to purchase. Photos and images are subject to copyright.