



Swaisland Road | West Dartford, Kent, DA1 3DA



£525,000 to £550,000

Freehold

ROBINSON-JACKSON
Our service will *move* you

Swaisland Road, West Dartford

Robinson Jackson are proud to offer this very well presented and maintained three bedroom bungalow located in the sought after West Dartford. Ideally situated for Grammar Schools and transport links.

Property Features

- Council Tax:
- EPC Rating: E
- Sought After Location
- Catchment for Popular Grammar Schools
- Approx 120' Rear Garden
- Two Reception Rooms
- Ample Parking
- Two Shower Rooms



Interior

Entrance Hall Opaque double glazed window and door to side. Radiator. Laminate flooring. Understairs storage cupboard.

Lounge 6.58 (21'7")m x 3.35 (11')m nr to 3.02 (9'11")m Double glazed sliding doors to rear. Radiators, Carpet.

Dining Room 4.47m x 2.92m (14'8" x 9'7") Double glazed window and french doors to rear. Radiator. Wood flooring.

Kitchen 4.45m x 2.26m (14'7" x 7'5") Opaque double glazed door and window to side. Range of wall and base units with complementary worksurfaces over incorporating sink drainer. Integrated oven, hob and extractor hood. Integrated fridge freezer and dishwasher. Plumbed for washing machine. Part tiled walls. cupboard housing boiler (installed 2008). Wood flooring.

Ground Floor Shower Room 2.84m x 2m (9'4" x 6'7") Double glazed window to front. Low level Wc. Vanity wash hand basin. Shower cubicle. Heated towel rail. Part tiled walls. Vinyl flooring.

Master Bedroom 3.33m x 3.18m (10'11" x 10'5") Double glazed Bay window to front. Radiator. Fitted wardrobes. Carpet.

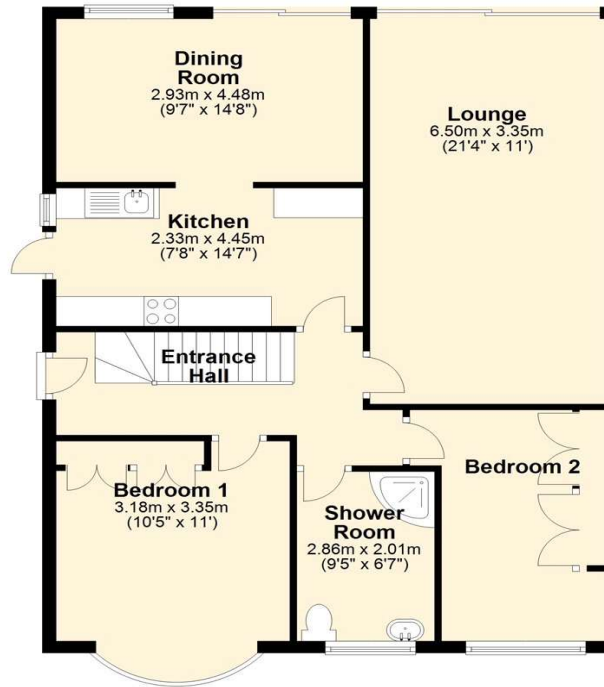
Bedroom Three 3.89m x 2.41m (12'9" x 7'11") Double glazed window to front. Radiator. Fitted wardrobes. Carpet.

Landing Access to eaves for storage. Carpet.

Bedroom Two 2.97m x 2.46m (9'9" x 8'1") Double glazed window to rear. Radiator. Fitted wardrobes. Carpet.

Shower Room Opaque double glazed window to rear. Low level Wc. Pedestal wash hand basin. Shower cubicle. Radiator. Vinyl flooring.

Ground Floor
Approx. 83.8 sq. metres (902.1 sq. feet)



First Floor
Approx. 18.9 sq. metres (203.2 sq. feet)



Total area: approx. 102.7 sq. metres (1105.3 sq. feet)

This Floorplan is for illustrative purposes only
Plan produced using PlanUp.





Property Location

Swaisland Road, West Dartford, Kent, DA1 3DA



Additional Information

The boiler is located in the Kitchen

The property measures 101 Sqm

Exterior

Rear Garden: Approx 120'. Patio. Lawn. Established flower beds and shrub borders.

Front Garden: Brick laid driveway for upto three cars.

Garage: 22'10 x 10'5. Up and over door. Door to side.

**FOR MORE INFORMATION
CONTACT US TODAY.**

01322 281281

Robinson Jackson
22 Market Street,
Dartford,
Kent DA1 1EZ

dartford@robinson-jackson.com

