



Keynsham Road | London, SE9 6QE



Guide Price £515,000 - £530,000.

Freehold

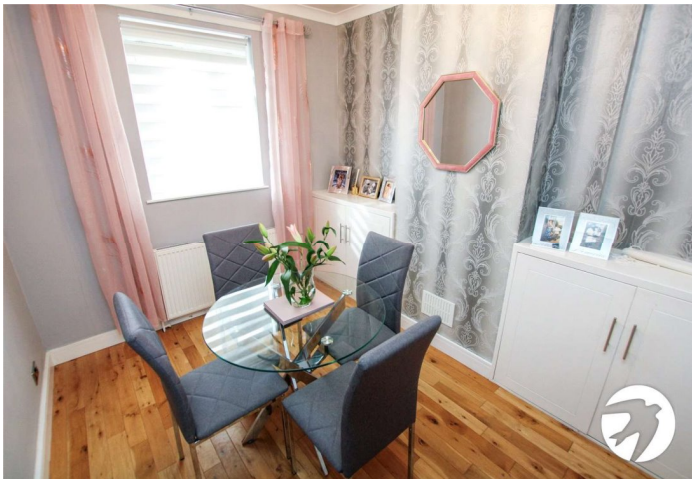
ROBINSON-JACKSON
Our service will *move* you

Keynsham Road, London

Robinson Jackson are delighted to bring to the market this immaculately presented three bedroom semi detached home benefiting from two reception rooms, conservatory and large garden to side. The property benefits from being conveniently located for schools, Eltham High Street and station.

Property Features

- Three bedrooms
- Two reception rooms
- First floor bathroom
- Large garden to the side
- Potential to extend (STPP)
- Short walk to Eltham High street and station



Interior

Entrance Hall Composite door to side, radiator, stairs to first floor

Lounge 4.06m x 3.89m (13'4" x 12'9") Double glazed window to front, radiator, solid wood flooring, fire surround and hearth

Dining Room 3.28m x 2.62m (10'9" x 8'7") Double glazed window to front, radiator, solid wood flooring

Kitchen 4.95m x 2.54m (16'3" x 8'4") Double glazed window to rear, range of wall and base units, stainless steel sink and drainer, space for cooker, stainless steel extractor hood, plumbing for washing machine and dishwasher, radiator, part tiled walls, laminate flooring

Conservatory 4.17m x 2.64m (13'8" x 8'8") Double glazed construction, double glazed french doors to rear, radiator, wood effect laminate flooring

Landing Carpet, radiator

Bedroom 1 3.84m x 3.43m (12'7" x 11'3") Double glazed window to front, radiator, picture rail, carpet

Bedroom 2 3.3m x 2.77m (10'10" x 9'1") Double glazed window to front, radiator, picture rail, solid wood flooring

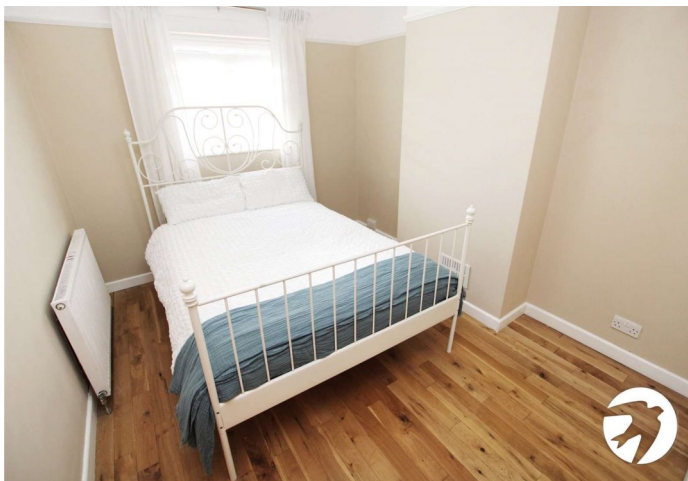
Bedroom 3 2.54m x 2.3m (8'4" x 7'7") Double glazed window to rear, radiator, solid wood flooring, picture rail

Bathroom Double glazed window to rear, 'L' shaped bath with shower above and glass screen, vanity wash hand basin with storage below, low level wc, sensor light and fan, heated towel rail, tiled walls and floor

Exterior

Rear Garden Paved area to rear

Side Garden 14.5m x 10.85m (47'7" x 35'7") Mainly laid to lawn, bar with covered seating area, decking area





Property Location

Keynsham Road, London, SE9 6QE



*All distances from branch postcode. Train time from nearest station.

Additional Information

Eltham is a popular town in the Royal Borough of Greenwich, with £2 million recently been spent on a High Street revitalisation programme, including a new cinema and sky bar complex.

There's a mainline train station offering a direct route to London and the magnificent Art Deco Eltham Palace. The Heritage Restaurant & Bar at the Tudor Barn, a modern leisure centre, the Bob Hope Theatre and Well Hall Pleasaunce can all be found in the town.

- Council Tax: D
- EPC Rating: D

**FOR MORE INFORMATION
CONTACT US TODAY.**

020 8859 9600

Robinson Jackson
2-4 Court Yard,
Eltham,
London SE9 5PZ

eltham@robinson-jackson.com

