

Sandra Court Cecil Avenue ME2 3BN

Leasehold



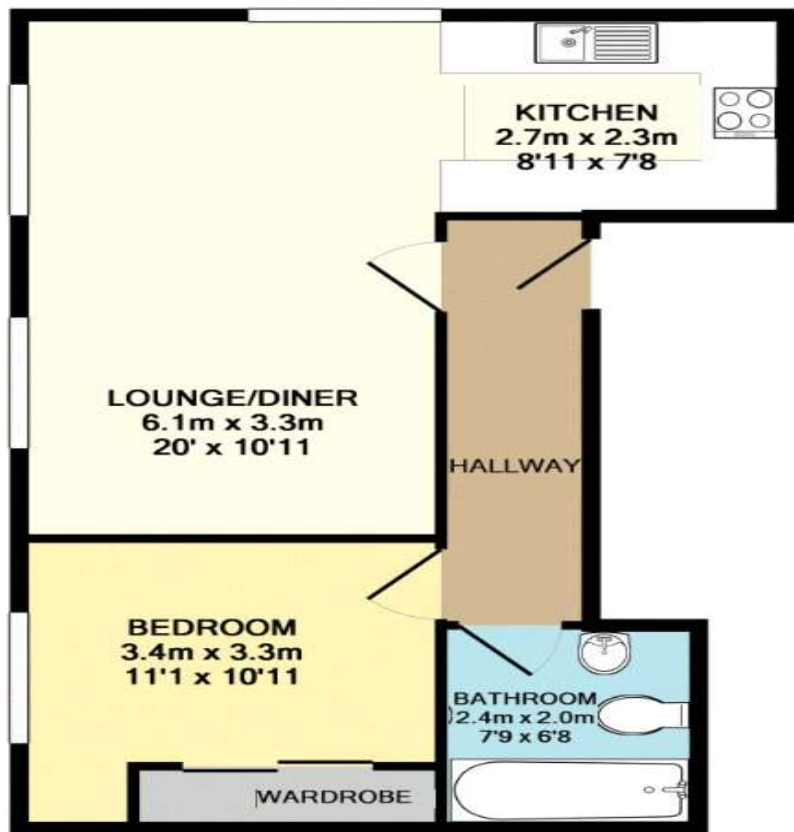
Council Tax: B
EPC Rating: C

No forward chain. This one bedroom top floor apartment is situated in the heart of Strood. With allocated parking and walking distance to local amenities. Call now to view

- No forward chain
- Allocated parking space
- Sought after location
- Walking distance to local amenities

Asking Price £140,000

ROBINSON MICHAEL & JACKSON
Our service will *move* you



**FOR MORE INFORMATION
CONTACT US TODAY.**

01634 722777
Robinson Michael & Jackson
109 High Street
Strood,
Kent ME2 4TJ
strood@robinson-jackson.com



Interior

Hallway Carpet, radiator, coved & textured ceiling

Lounge/Diner 6.1m x 3.33m (20' x 10'11") Carpet, 2 x radiators , coved & textured ceiling,

Kitchen 2.64m x 2.34m (8'8" x 7'8") Wooden flooring, double glazed window to side, extractor fan, oven, hob, sink basin with one mixer tap, wall to base units ,washing machine, space for appliances

Bedroom 3.63m x 3.33m (11'11" x 10'11") Built in wardrobes, carpet, double glazed window , radiator

Bathroom 2.36m x 2.03m (7'9" x 6'8") Fully tiled floor to ceiling , bath with shower over, wall mounted towel rail, sink basin with mixer tap

Exterior

Communal entrance.

Leasehold Information

Time remaining on lease: Approx. 77 years and 11 months

Ground Rent: £100 Per Annum

Service Charge: £600 Per Annum

Additional Information

Strood is a town in the unitary authority of Medway in Kent, South East England. It lies on the northwest bank of the River Medway at its lowest bridging point. Strood has a main high street which includes many

large retailers including B&M, Marks and Spencer's Foodhall & Matalan. The high street is only a short drive away from the main A2/M2 motorway links.