



Whimbrel Close | Sittingbourne, ME10 2JL



1



1



1

Price on Application

Leasehold

EPC = C

**ROBINSON MICHAEL & JACKSON**

Our service will **move** you



## Whimbrel Close, Sittingbourne

A recently refurbished and beautifully presented ground floor studio apartment with off street parking located just off Attlee way in Milton.

### Property Features

- Refurbished throughout
- Allocated parking
- Built in wardrobes
- Ground floor
- Great location
- No chain



## Interior

**Porch:** 0.43m x 0.95 (1'5" x 0.95)

**Lounge/Bedroom:** 2.46m x 3.1m (8'1" x 10'2")

**Kitchen:** 0.81m x 0.91m (2'8" x 3')

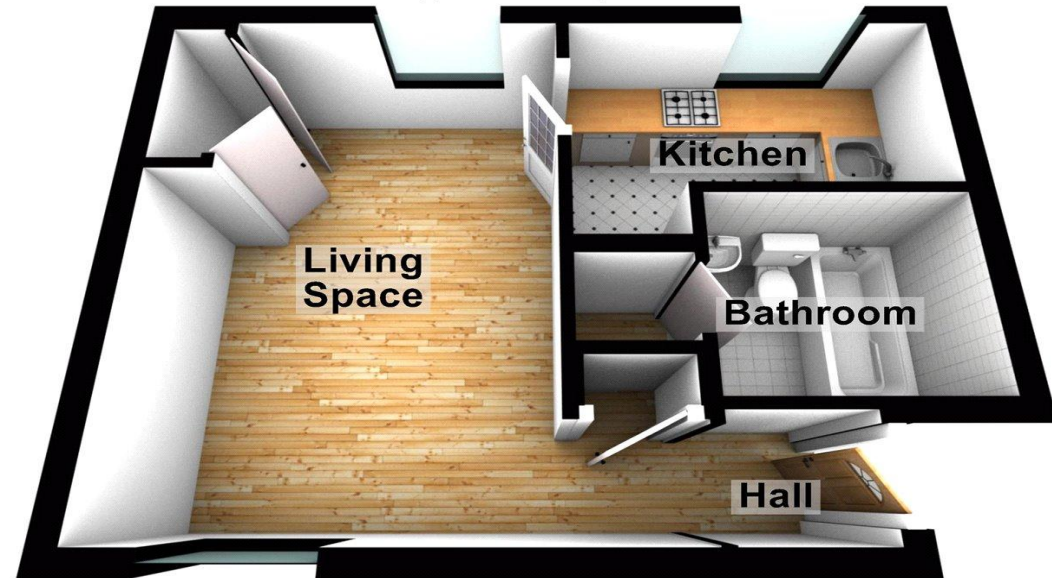
**Bathroom:** 0.5m x 0.48m (1'8" x 1'7")

## Exterior

Off street parking space.

## Ground Floor

Approx. 275.7 sq. feet

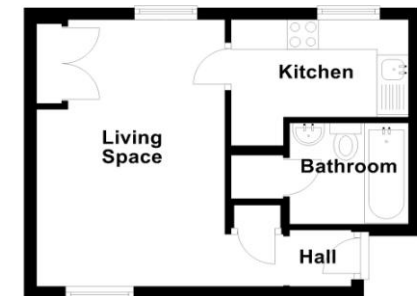


Please be advised this plan is offered for marketing purposes only. It can not be relied upon for exact or precise measurements, angles, window or door openings. Whilst every effort is made to ensure the accuracy the company or provider accepts no responsibility for the content.  
Plan produced using PlanUp.



## Ground Floor

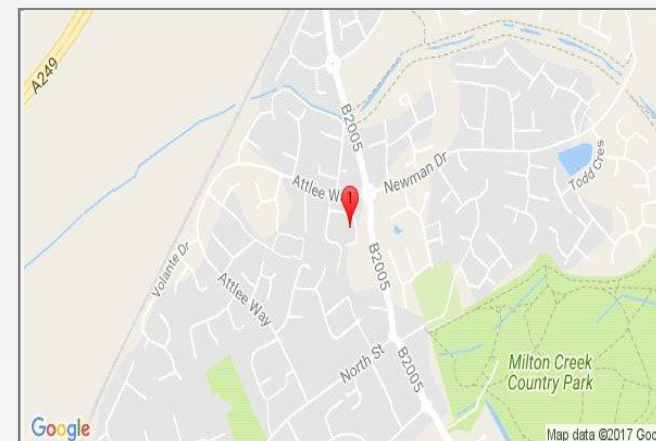
Approx. 275.7 sq. feet



Please be advised this plan is offered for marketing purposes only. It can not be relied upon for exact or precise measurements, angles, window or door openings. Whilst every effort is made to ensure the accuracy the company or provider accepts no responsibility for the content.  
Plan produced using PlanUp.

## Property Location

Whimbrel Close, Sittingbourne, ME10 2JL



**FOR MORE INFORMATION  
CONTACT US TODAY.**

01795 479999  
Robinson Michael & Jackson  
38 West Street,  
Sittingbourne,  
Kent ME10 1AP  
[sittingbourne@robinson-jackson.com](mailto:sittingbourne@robinson-jackson.com)

