



Park House | 98 Crystal Palace Park Road, Sydenham, SE26 6UP



£350,000

Leasehold

EPC = D



Park House, 98 Crystal Palace Park Road

Charming ground floor leasehold period conversion maisonette with one double bedroom, residents parking, direct access to private garden, and ample storage, set within a sought after location, ideal for multiple stations, conveniently located for local high street shops and amenities and Crystal Palace Park

Property Features

- One Double Bedroom
- Period Conversion Maisonette
- Long Lease
- Ground Floor
- Residents Parking
- Direct Access to Large Private Garden
- Double Glazed
- Entry Phone
- Ideal for Multiple Stations, local high street shops and amenities and Crystal Palace Park



Interior

Communal Entrance

Entrance Hall Laminate flooring, radiator

Lounge Two double glazed bay sash windows to front, double glazed doors to front leading to large private garden, laminate flooring, radiator

Kitchen Double glazed window to side, range of wall and base units, laminate work surface, stainless steel sink unit, integrated stainless steel oven, hob and extractor, space for fridge/freezer, plumbed for washing machine, tiled flooring, radiator

Bedroom Double glazed window to front, built in wardrobe, vinyl flooring, radiator

Bathroom Panelled bath with mixer tap and shower attachment, wash hand basin, low flush WC, tiled flooring, heated towel rail, extractor fan

Exterior

Residents parking

Direct access to large private garden mainly laid to lawn with shrubs and rear access

Additional Information

Double glazing

Central heating

Ample storage

Entry phone

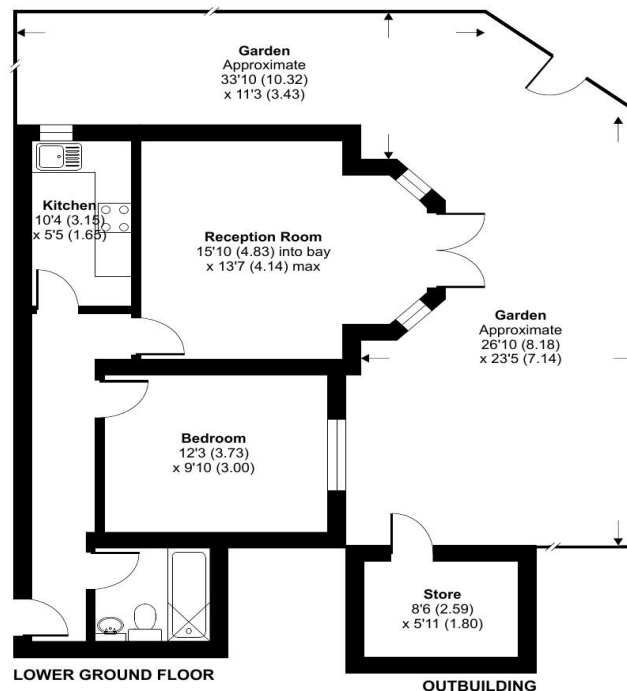
Ground floor

991 year lease

Attractive period building

Ideal for multiple stations

Conveniently located for local high street shops and amenities and Crystal Palace Park



Approximate Area = 518 sq ft / 48.1 sq m
Outbuilding = 51 sq ft / 4.7 sq m
Total = 569 sq ft / 52.9 sq m
For identification only - Not to scale



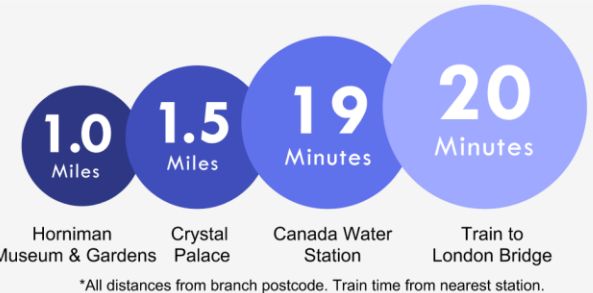
Floor plan produced in accordance with RICS Property Measurement Standards incorporating International Property Measurement Standards (IPMS2 Residential). © nchecon 2022. Produced for Robinson Jackson.





Property Location

Park House, 98 Crystal Palace Park Road, Sydenham, SE26 6UP



FOR MORE INFORMATION
CONTACT US TODAY.

020 8776 6660
Robinson Jackson
256 Kirkdale,
Sydenham,
London SE26 4NL
sydenham@robinson-jackson.com



These particulars do not form part of an offer or contract and must not be relied upon as statements or representation of fact. Any areas, measurements, journey times or distances are approximate. The text, images, photographs and plans are for guidance only and are not necessarily comprehensive. It should not be assumed that the property has all necessary planning, building regulation or other consents and we have not tested any services, equipment or facilities. References to tenure are based on information supplied by the seller. Buyer should verify all information themselves by inspection or otherwise prior to a legal commitment to purchase. Photos and images are subject to copyright.