



Brookmead Road | Cliffe Woods, Rochester, ME3 8HP



Offers Over £325,000

Freehold

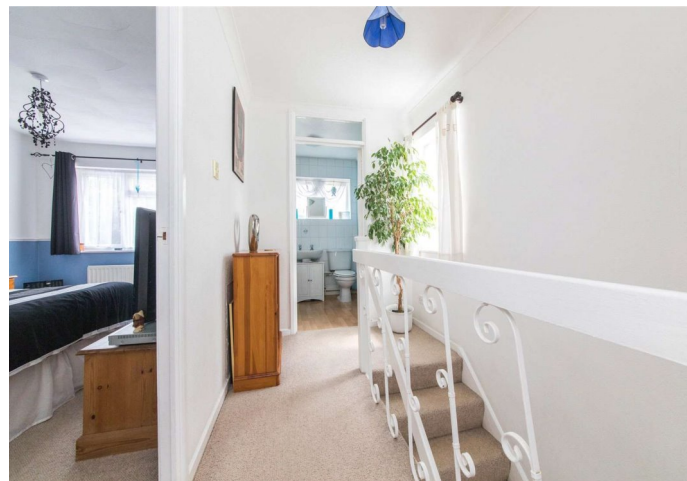
ROBINSON MICHAEL & JACKSON
Our service will *move* you

Brookmead Road, Cliffe Woods

GENEROUS CORNER PLOT - Situated within a prime location, within close proximity to local schools and motorway links. This family home benefits from two bathrooms, a kitchen/diner.

Property Features

- Council Tax: C
- EPC Rating: C
- Corner Plot
- Popular Village Location
- Off Street Parking & Garage
- Kitchen / Diner
- Two Bathrooms
- Three Bedrooms



Interior

Living Room 4.37m x 3.8m (14'4" x 12'6")

Kitchen Dining Room 4.75m x 3.18m (15'7" x 10'5")

GF Bathroom

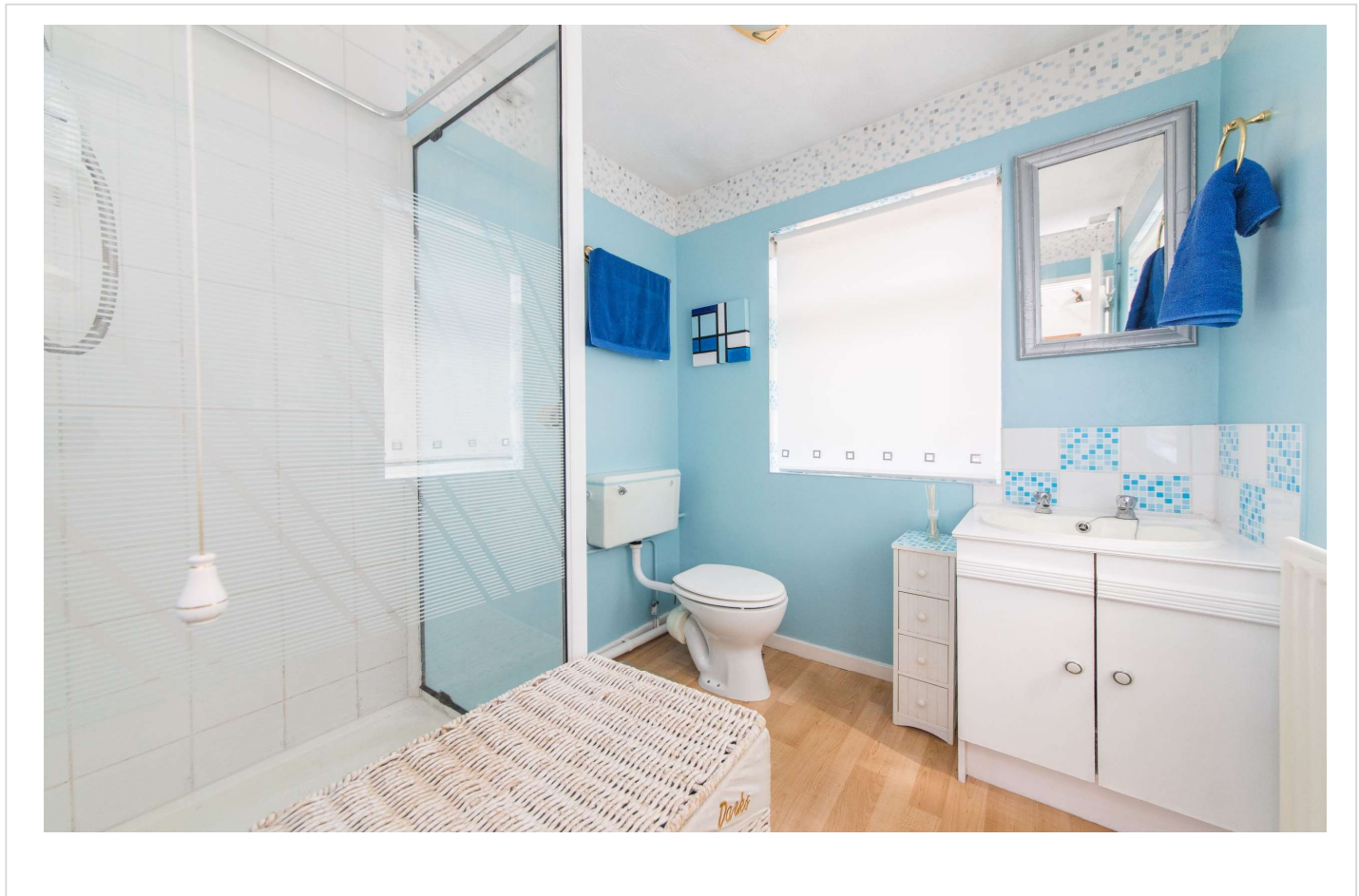
Landing

Bedroom One 4.27m x 2.84m (14' x 9'4")

Bedroom Two 3.4m x 2.03m (11'2" x 6'8")

Bedroom Three 2.1m x 8.10 (6'11" x 8.10)

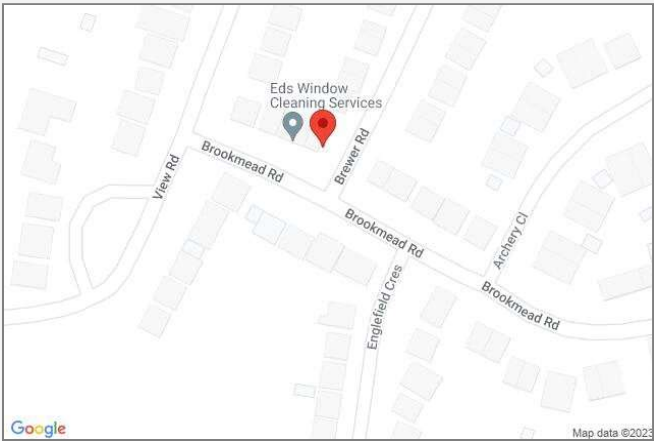
Bathroom





Property Location

Brookmead Road, Cliffe Woods, Rochester, ME3 8HP



M2 Junction 2 Ebbsfleet International Bluewater Train to London

*All distances from branch postcode. Train time from nearest station.

**FOR MORE INFORMATION
CONTACT US TODAY.**

01634 722777
Robinson Michael & Jackson
109 High Street
Strood,
Kent ME2 4TJ
strood@robinson-jackson.com



These particulars do not form part of an offer or contract and must not be relied upon as statements or representation of fact. Any areas, measurements, journey times or distances are approximate. The text, images, photographs and plans are for guidance only and are not necessarily comprehensive. It should not be assumed that the property has all necessary planning, building regulation or other consents and we have not tested any services, equipment or facilities. References to tenure are based on information supplied by the seller. Buyer should verify all information themselves by inspection or otherwise prior to a legal commitment to purchase. Photos and images are subject to copyright.