



North Road | Belvedere, Kent, DA17 6JX

 4  2  1

Price on Application    Freehold

EPC = C

**ROBINSON-JACKSON**  
Our service will *move* you



## North Road, Belvedere

This is a spacious four bedroom family home with accommodation over three floors. The property is located only a short walk from Belvedere station, where you will soon be able to access the forthcoming Crossrail link at Abbey Wood. Your earliest viewing is highly recommended.

## Property Features

- Four bedrooms
- Off street parking
- Large garden
- Utility room
- Ground floor shower room
- Close to Belvedere train station





## Interior

**Entrance Hall** Door to front

**Ground floor shower room** Tiled floor, tiled walls, corner shower cubicle, pedestal wash basin, low level wc, heated towel rail, extractor fan

**Utility Room (ground floor)** 3.86m x 2.82m (12'8" x 9'3") UPVC double glazed door to rear, tiled floor, wall mounted 'Combi' boiler, plumbing for washing machine and dishwasher

**Bedroom 4 (ground floor)** 4.42m x 2.92m (14'6" x 9'7") Double glazed window to rear, radiator, carpet

**Lounge (first floor)** 5.97m x 3.07m (19'7" x 10'1") Double glazed windows to front and rear, radiators, wood laminate flooring, electric fire

**Kitchen (first floor)** 2.74m x 2.29m (9' x 7'6") Double glazed windows to side and rear, wall and base units, sink unit with mixer tap, built in oven and four ring electric hob, extractor, space for fridge/freezer, integrated dishwasher, gloss tiled floor, tiled walls, inset spotlights,

**Bathroom (first floor)** Double glazed frosted window to front, pedestal wash hand basin, panelled bath with mixer tap and shower attachment, radiator, tiled walls

**Bedroom 1 (second floor)** 3.89m x 3.1m (12'9" x 10'2") Double glazed windows to rear and side, radiator, carpet

**Bedroom 2 (second floor)** 3.23m x 3.07m (10'7" x 10'1") Double glazed window to rear, radiator, carpet, access to loft

**Bedroom 3 (second floor)** 2.84m x 2.67m (9'4" x 8'9") Double glazed window to front, radiator, built in wardrobe, carpet

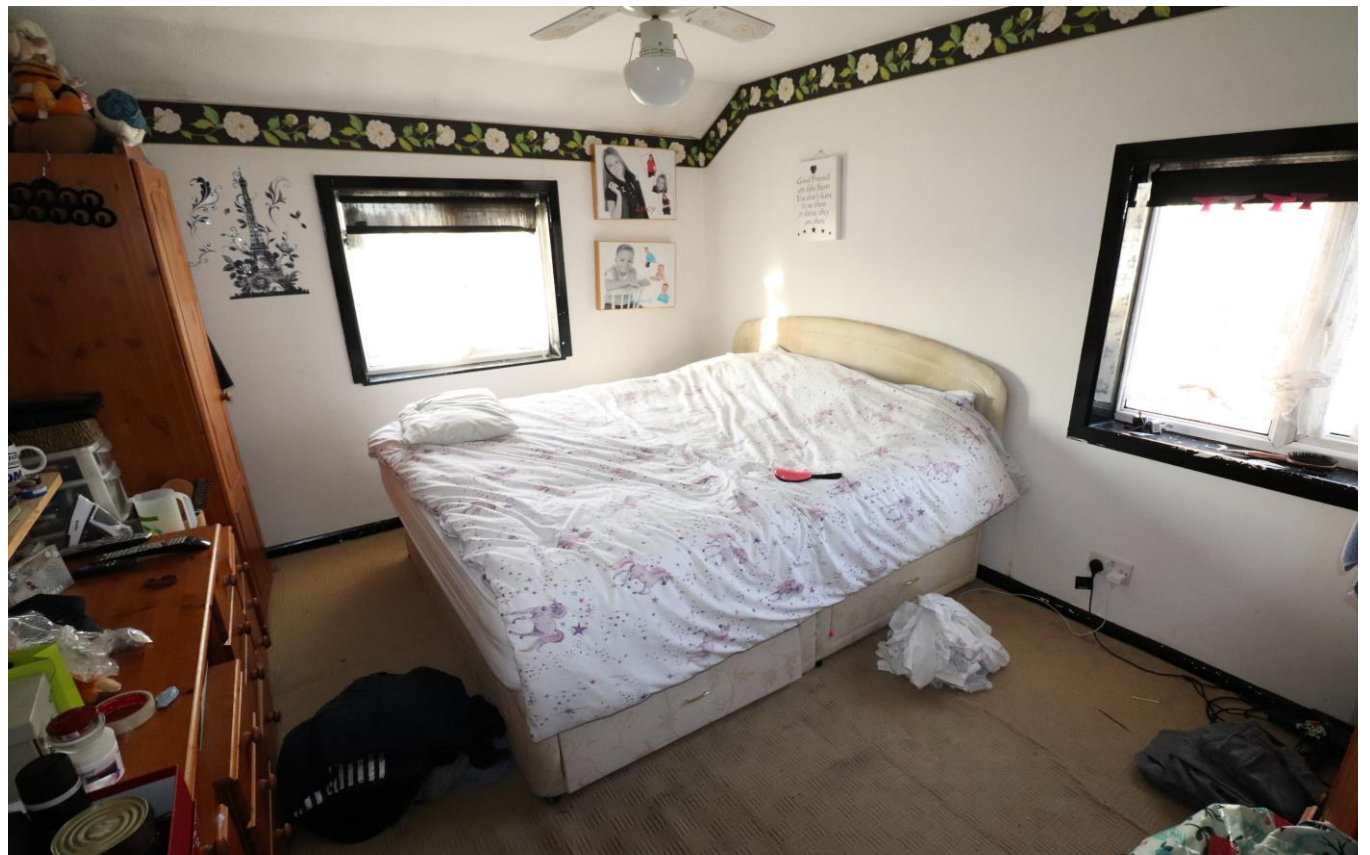
**WC (second floor)** Double glazed frosted window to front, part tiled walls, vinyl flooring, low level wc

## Exterior

**Garden** Approx 100', patio area, two sheds, mainly laid to lawn, outbuilding with power and light

**Parking** Off street parking to front for two cars

**Total floor area** The EPC states that the total floor area for this property is 116 m2

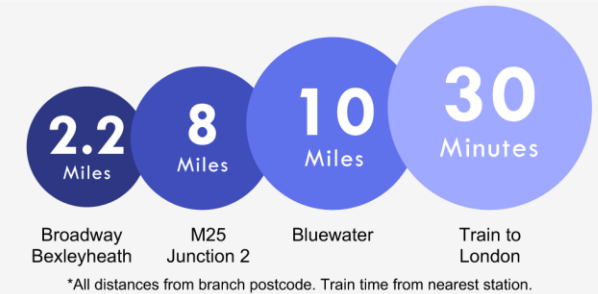






## Property Location

North Road, Belvedere, Kent, DA17 6JX



## Additional Information

At the heart of Belvedere is Nuxley Village – where you'll find shops, pubs, restaurants and the Robinson Jackson branch. Explore a little further and you'll find Lesnes Abbey, with its historic monastic ruins and formal gardens, and Bostall Woods with its protected bluebell fields and ancient trees.

Belvedere residents will be a manageable walk or one stop on the train line away from Abbey Wood's forthcoming Crossrail station

FOR MORE INFORMATION  
CONTACT US TODAY.

01322 441010

Robinson Jackson  
61 Nuxley Road,  
Belvedere,  
Kent DA17 5JN

belvedere@robinson-jackson.com

