



The Course | New Eltham, SE9 3JA



3



1



2

Offers IEO £375,000

Freehold

EPC = C

ROBINSON-JACKSON
Our service will *move* you

The Course, New Eltham

Offered to the market chain free is this three bedroom family home with off street parking. Convenient for local shops, schools and bus routes.

Property Features

- 14ft Lounge
- Fitted Kitchen
- Ground Floor WC/Cloakroom
- First Floor Shower Room
- Off Street Parking
- Chain Free



Interior

Entrance Hall: Under stairs storage and carpet as fitted.

Lounge: 4.32m x 3.8m (14'2" x 12'6") Feature fireplace, square arch to dining room and carpet as fitted.

Dining Room: 3.23m x 2.57m (10'7" x 8'5") Square arch to lounge, doors to rear garden and carpet as fitted.

Kitchen: 3.15m x 2.87m (10'4" x 9'5") Fitted with a range of wall and base units with complimentary work surfaces. Part tiled walls and flooring.

Lobby: Tiled flooring and door to rear garden.

Ground Floor WC/Cloakroom: Fitted with a low level WC and wash hand basin.

Landing: Access to loft and carpet as fitted.

Bedroom 1: 3.73m x 3.66m (12'3" x 12') Built in wardrobe and carpet as fitted.

Bedroom 2: 3.66m x 3.2m (12' x 10'6") Built in wardrobe and carpet as fitted.

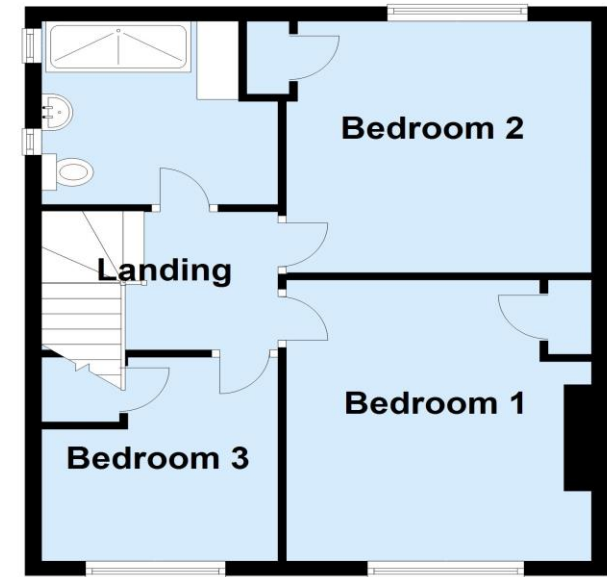
Bedroom 3: 2.67m x 2.64m (8'9" x 8'8") Built in cupboard and carpet as fitted.

Shower Room: Fitted with a three piece suite comprising of a walk in shower cubicle, wash hand basin and WC. Vinyl flooring and part tiled walls.

Ground Floor



First Floor



Plan produced using PlanIt





Property Location

The Course, New Eltham, SE9 3JA



Exterior

Rear Garden: Mainly laid to lawn with patio area and shed to remain. Side access.

Off Street Parking: Driveway to front for 2 cars.

FOR MORE INFORMATION
CONTACT US TODAY.

020 8859 9600
Robinson Jackson
2-4 Court Yard,
Eltham,
London SE9 5PZ
eltham@robinson-jackson.com

