



Emerald Crescent | Sittingbourne, Kent, ME10 5JJ



Offers in excess of £160,000 Leasehold

ROBINSON MICHAEL & JACKSON

Our service will *move* you

Emerald Crescent, Sittingbourne

Presenting a sleek and modern ground floor flat in Emerald Crescent, Senora fields. This well-maintained residence is not only conveniently located on the ground floor but also showcases a contemporary design throughout.

Featuring a practical and sought-after allocated parking space, this property ensures a stress-free parking experience. With a long lease in place, residents can enjoy stability and peace of mind, making it an ideal option for those looking to settle in for the long term.

This flat is not just about convenience – it's a must-see for anyone seeking a well-presented, modern living space with the added benefit of allocated parking and a lengthy lease. Don't miss out on the opportunity to call this place home – schedule your viewing now!



Property Features

- Council Tax: B
- EPC Rating: C
- Ground floor
- Well presented
- Modern
- Allocated parking
- Long lease
- A must view

Interior

Lounge: 4.27m x 3.38m (14' x 11'1")

Kitchen: 1.83m x 2.44m (6' x 8')

Bedroom 1: 2.13m x 2.46m (7' x 8'1")

Bathroom: 2.46m x 1.55m (8'1" x 5'1")

Exterior

Allocated parking space

Leasehold Information

Time remaining on lease: Approx. 180 years

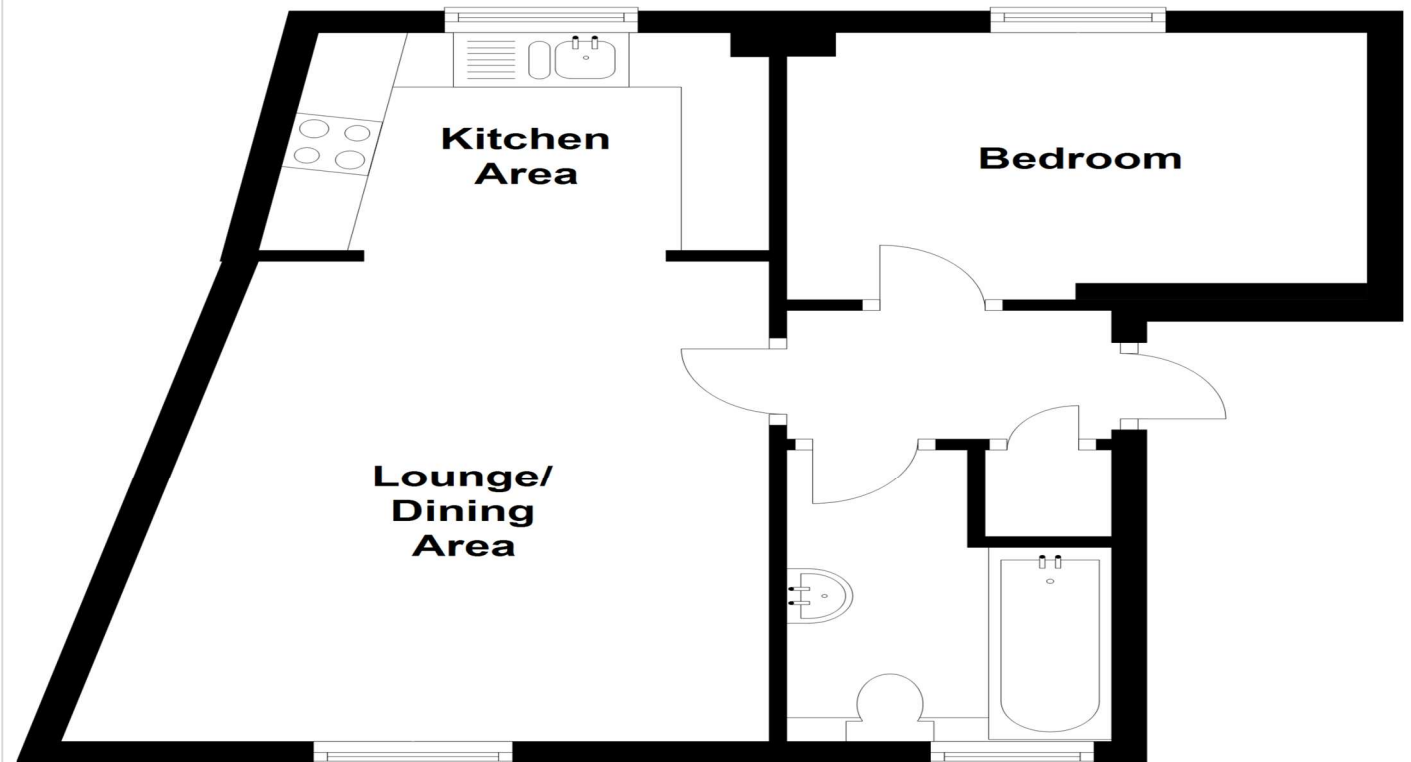
Ground Rent: £150 Per Annum

Service Charge: £947 Per Annum

Ground Rent Review Date: 01/10/2024

Ground Floor

Approx. 37.3 sq. metres (401.9 sq. feet)



Property Location

Emerald Crescent, Sittingbourne, Kent, ME10 5JJ



**FOR MORE INFORMATION
CONTACT US TODAY.**

01795 479999
Robinson Michael & Jackson
38 West Street,
Sittingbourne,
Kent, ME10 1AP
sittingbourne@robinson-jackson.com

