



7
9
B
4
6

Robinson-Jackson
79B46
Call 01203 200000
www.rj.co.uk

Beaconsfield Road | Mottingham, SE9 4EG



Guide Price £230,000 - £240,000

Leasehold

EPC = C

ROBINSON-JACKSON
Our service will *move* you

Beaconsfield Road, Mottingham

Offered to the market is this much improved two double bedroom ground floor flat. Convenient for local shops, amenities and bus routes providing access to Mottingham and Elmstead Woods stations.

Property Features

- 14ft Open Plan Kitchen/Living Room
- Modern Fitted Kitchen Units
- Modern White Three Piece Bathroom Suite
- Two Double Bedrooms
- Double Glazing & Central Heating
- Convenient Location



Interior

Communal Entrance: Entry phone system.

Entrance Hall: Entry phone system, storage cupboard and wood style laminate flooring.

Open Plan Kitchen/Living Room: 4.3m x 3.23m (14'1" x 10'7") Fitted with a range of modern wall and base units with complimentary work surfaces. Integrated oven, hob and filter hood. Large double glazed windows to front and wood style laminate flooring.

Bedroom 1: 4.34m x 2.67m (14'3" x 8'9") Built in wardrobes, large double glazed windows to front and wood style laminate flooring.

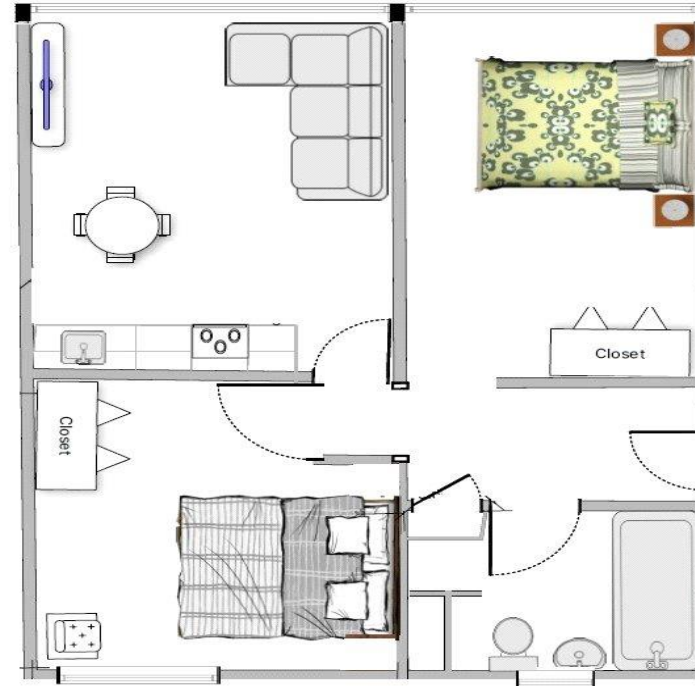
Bedroom 2: 3.23m x 3.12m (10'7" x 10'3") Built in storage, double glazed window to rear and wood style laminate flooring.

Bathroom: Fitted with a modern white three piece suite comprising of an enclosed vanity wash hand basin with storage under, enclosed cistern WC and a panelled bath with glass shower screen. Utility cupboard fitted with washing machine, part tiled walls and vinyl flooring.

Exterior

Communal Gardens: To Front.

Residents Parking: To rear.





Leasehold Information

Original Lease: 125 Years From 1988

Unexpired Lease: Approx 93 Remaining

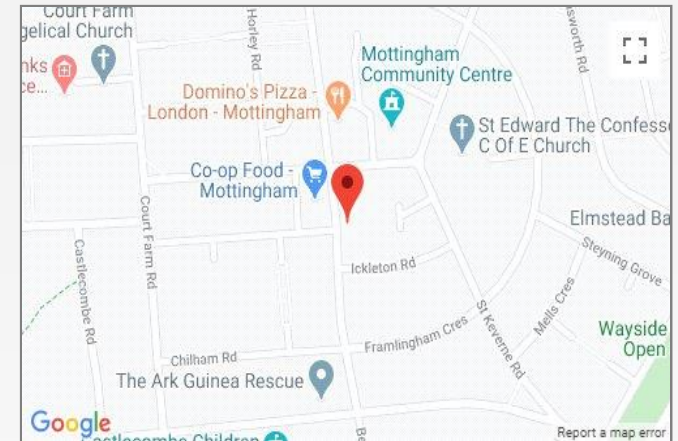
Current Ground Rent: £10 Per Annum (maybe subject to upward reviews)

Next Ground Rent Review Date: April 2021

Service Charge: Approx £100 Per Month

Property Location

Beaconsfield Road, Mottingham, SE9 4EG



FOR MORE INFORMATION
CONTACT US TODAY.

020 8859 9600

Robinson Jackson
2-4 Court Yard,
Eltham,
London SE9 5PZ

eltham@robinson-jackson.com

