



Princes Road | West Dartford, Kent, DA1 3HJ



£475,000 to £500,000

Freehold

**ROBINSON-JACKSON**  
Our service will *move* you



## Princes Road, West Dartford

Robinson Jackson are proud to offer this very well presented and maintained three bedroom family home located in the sought after West Dartford. Situated ideally for Grammar schools and transport links

### Property Features

- Council Tax:
- EPC Rating: D
- Sought After West Dartford Location
- Potential to Extend (STPP)
- Catchment to Dartford Grammar School
- Approx 100' Rear Garden
- Open Plan Kitchen Diner
- Garage and Parking





## Interior

**Entrance Hall** Door and window to front. Radiator. Wood flooring.

**Lounge** 4.14m x 3.5m (13'7" x 11'6") Double glazed bay window to front. Feature fire place. Rolled Radiator. Carpet.

**Ground Floor Wc** Low level Wc. Wash hand basin. laminate flooring.

**Kitchen Diner** 5.26 (17'3")m x 3.6 (11'10")m nr to 2.5 (8'2")m Double glazed window and sliding door to rear. Range of wall and base units with complementary worksurfaces over incorporating sink drainer. Space for 'Range' style cooker. Integrated dishwasher. Integrated fridge. Feature fireplace. Radiator. Vinyl flooring.

**Conservatory** 4.62m x 2.95m (15'2" x 9'8") Double glazed windows to side and rear. Double glazed French doors to rear. Radiator. Tiled flooring.

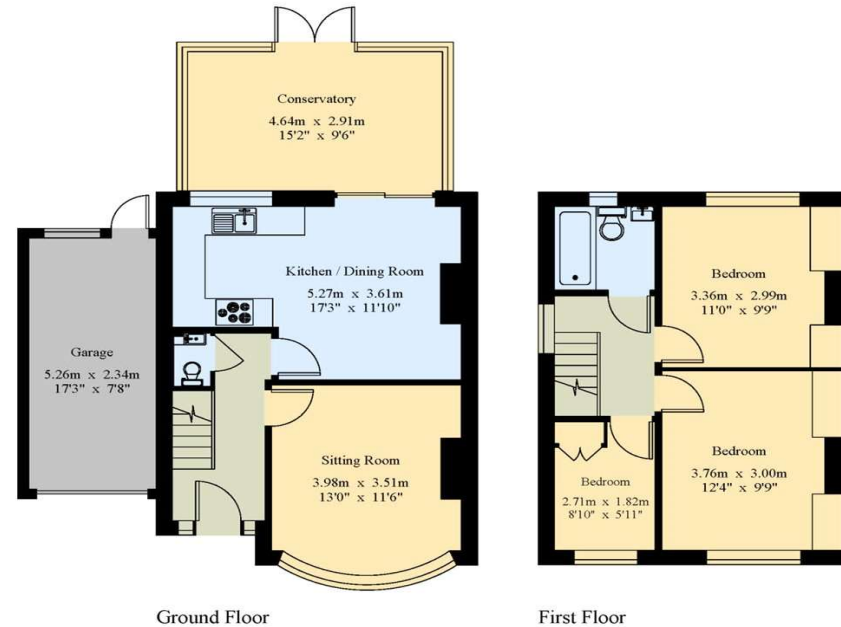
**Landing** Double glazed Window to side. Loft access. Carpet.

**Bedroom One** 3.7m x 3.35m (12'2" x 11') Double glazed window to front. Radiator. Feature fireplace. Fitted wardrobes. Carpet.

**Bedroom Two** 3.35m x 3.35m (11' x 11') Double glazed window to rear. Radiator. Feature fireplace. Carpet.

**Bedroom Three** 2.67m x 1.8m (8'9" x 5'11") Double glazed window to front. Radiator. Over stairs storage cupboard. Carpet.

**Bathroom** 1.78m x 1.75m (5'10" x 5'9") Double glazed window to rear. Low level Wc. Wash hand basin. Panelled Bath with shower over. Radiator. Tiled walls. Tile effect vinyl flooring.

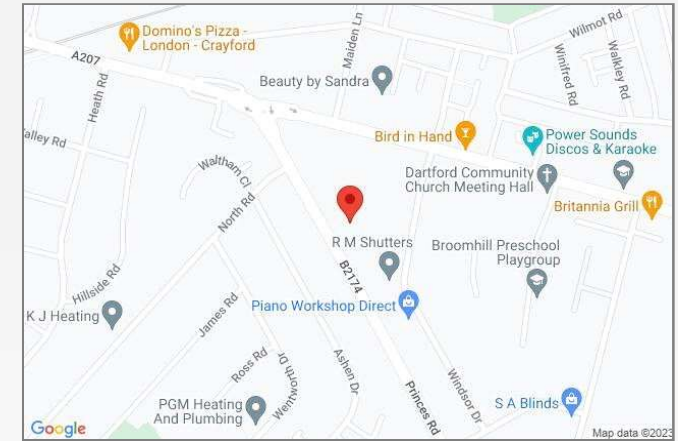






## Property Location

Princes Road, West Dartford, Kent, DA1 3HJ



\*All distances from branch postcode. Train time from nearest station.

## Additional Information

The property measures: 75 Sqm

The boiler is located in the Garage.

The seller is looking to buy a new property.

## Exterior

Front Garden: Driveway for upto three cars. Laid to lawn. Established flower beds.

Rear Garden: Approx 100'. Decking. Patio. Lawn. Established flower beds. Summerhouse. Rear Gated access.

Garage: 5.28m x 2.34m. Up and over door. Power and lighting. Wall mounted boiler.

**FOR MORE INFORMATION  
CONTACT US TODAY.**

01322 281281

Robinson Jackson  
22 Market Street,  
Dartford,  
Kent DA1 1EZ

dartford@robinson-jackson.com

