



# Dairsie Road

Eltham Park | SE9 1XN



# Dairsie Road

Eltham Park, SE9 1XN

A simply stunning and much improved two bedroom Edwardian Corbett home benefitting from a kitchen extension, large rear garden, first floor shower room and off street parking.

## Features:

- Edwardian Corbett
- 14ft Living Room
- 17ft Dining Room
- 17ft Extended Kitchen
- Double Glazed Sash Windows
- Bespoke Shutter Blinds
- First Floor Shower Room
- Large Rear Garden
- Off Street Parking
- Convenient Location



# Interior

**Entrance Hall:** Bespoke built in storage under stairs, dado rail and Amtico flooring.

**Living Room:** 4.27m x 3.4m (14' x 11'2") Feature fireplace and double glazed sash windows to front with fitted shutter blinds. Cornicing, ceiling rose and Amtico flooring. Open to Dining Room.

**Dining Room:** 5.33m x 3.23m (17'6" x 10'7") Under stairs storage cupboard, cornicing, ceiling rose and Amtico flooring. Doors leading to extended kitchen.

**Extended Kitchen:** 5.2m x 2.24m (17'1" x 7'4") Fitted with a range of modern wall and base units with complimentary work surfaces. Integrated Fridge/Freezer, dishwasher, washing machine, oven, hob and filter hood. Part tiled walls and Amtico flooring.

**Landing:** Access to loft and carpet as fitted.

**Bedroom 1:** 4.62m x 3.43m (15'2" x 11'3") Built in wardrobes, double glazed sash windows to front with fitted shutter blinds and carpet as fitted.

**Bedroom 2:** 3.38m x 2.5m (11'1" x 8'2") Carpet as fitted.

**Shower Room:** 2.6m x 2.36m (8'6" x 7'9") Fitted with a stunning suite comprising of a low level WC, walk in shower with rainfall shower over, his/hers sink unit with granite counter top and storage under. Part tiled walls and tiled flooring.



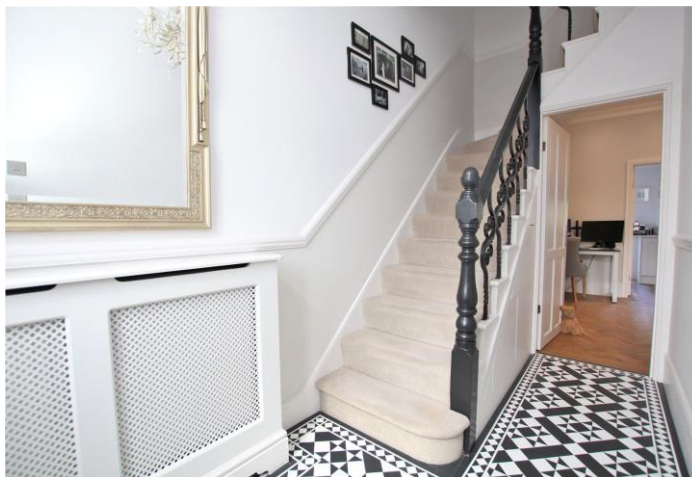


## Exterior

**Rear Garden:** Mainly laid to lawn with paved patio area from Kitchen and large flag stone paved patio to rear. Shed to remain.

**Off Street Parking:** Driveway to front for one car.

**EPC Rating – C**





## Important Notice

These particulars do not form part of an offer or contract and must not be relied upon as statements or representation of fact. Any areas, measurements, journey times or distances are approximate. The text, images, photographs and plans are for guidance only and are not necessarily comprehensive. It should not be assumed that the property has all necessary planning, building regulation or other consents and we have not tested any services, equipment or facilities. References to tenure are based on information supplied by the seller. Buyer should verify all information themselves by inspection or otherwise prior to a legal commitment to purchase. Photos and images are subject to copyright.

## Location



(All distances & times are approximates)

## FOR MORE INFORMATION CONTACT US TODAY.

Will Chidley - Branch Manager

020 8859 9600

Robinson Jackson

2-4 Court Yard,

Eltham,

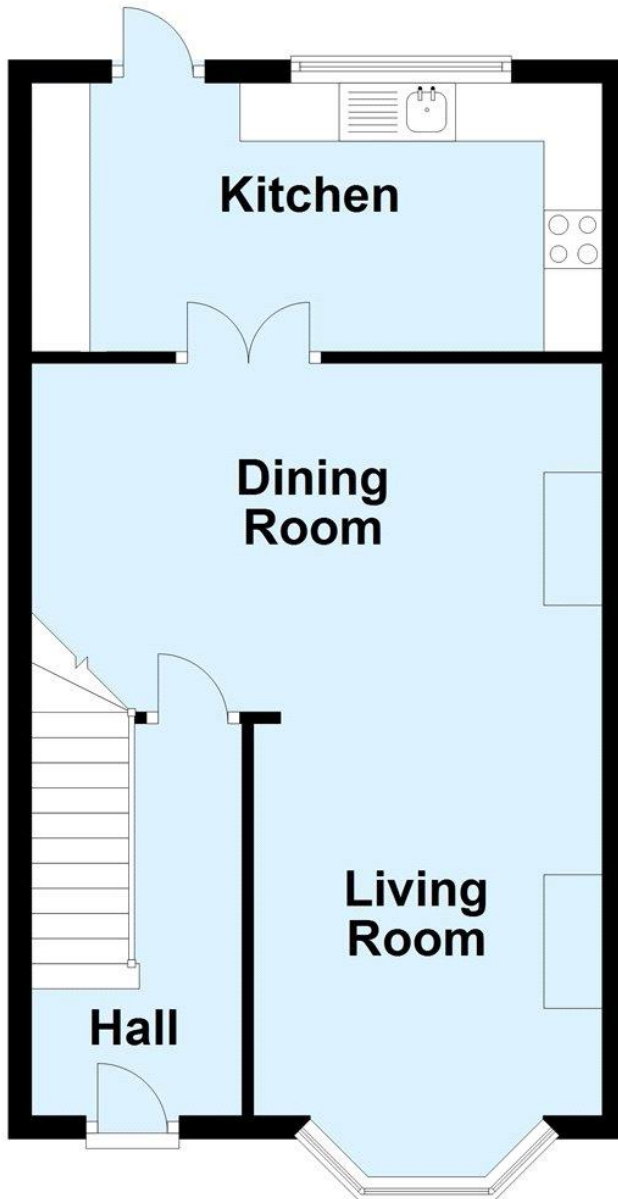
London SE9 5PZ

eltham@robinson-jackson.com

SALES | MORTGAGES | LEGALS

**ROBINSON-JACKSON**

## Ground Floor



## First Floor

