



Kirby Road | Dartford, Kent, DA2 6HA



Guide Price £450,000 to £475,000

Freehold

ROBINSON-JACKSON
Our service will *move* you

Kirby Road, Dartford

Deceptively spacious Robinson Jackson are delighted to market this four bedroom family home. Internal viewing is the only way to appreciate the spacious accommodation offered Call now to arrange yours.

Property Features

- Council Tax: C
- EPC Rating: C
- Master Bedroom With En-suite Shower Room And Walk In Wardrobe.
- Off Street Parking For Two Cars
- Kitchen Diner With Separate Lounge
- Rear Garden Benefits From A Covered Decked Area With Artificial Lawn And Shrubs
- Ideally Located For Popular Local Schools
- Internal Viewing Comes Highly Recommended



Interior

Entrance Porch: Double glazed window to front. Double glazed window to front. Wood effect flooring.

Entrance Hall: Double glazed entrance door. Covered ceiling. Spotlights. Cupboard housing electric meter. Carpeted stairs to first floor. Radiator. Under stairs storage area. Wood effect flooring.

Living Room: Double glazed window to front. Covered ceiling. Radiator. Wood effect flooring.

Kitchen Diner: Double glazed French doors to garden. Double glazed door to garden. Double glazed window to rear. Covered ceiling. Stainless steel sink unit. Matching range of wall and base units. Complimentary work-surfaces. Plumbing for washing machine. Stainless steel cooker hood. Stainless steel four ring gas hob. Electric oven. Tiled splash backs. Tiled splash backs. Space for fridge freezer. Wood effect floor.

Landing: Carpeted stairs to first floor. Storage cupboard. Radiator.

Bedroom Two: Double glazed window to front. Covered ceiling. Radiator. Wood effect flooring.

Bedroom Three: Double glazed window to rear. Covered ceiling. Radiator. Wood effect flooring.

Bedroom Four: Double glazed window to front. Radiator. Wood effect flooring.

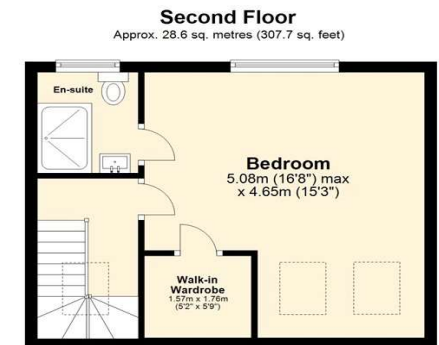
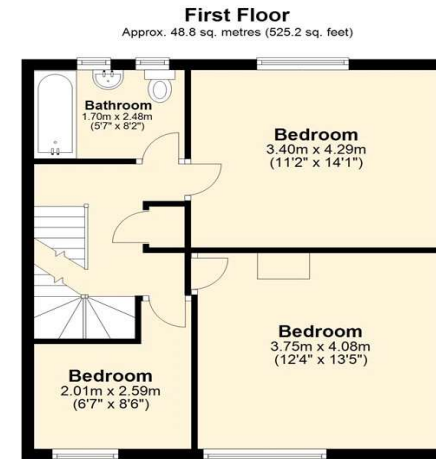
Bathroom: Two frosted double glazed windows to rear. Spotlights. Low level WC. Pedestal wash hand basin. Panel bath with mixer tap and shower attachment. Radiator. Part tiled walls. Wood effect vinyl floor.

Second Floor Landing: Velux window to front. Spotlight. Carpet.

Bedroom One: Two Velux windows to front. Double glazed window to rear. Spotlights. Radiator. Carpet. Door to en-suite. Door to walk in wardrobe.

En-Suite Shower Room: Frosted double glazed window to rear. Spotlights. Tiled walls. Tiled floor. Vanity wash hand basin. Low level WC. Walk in tiled double shower cubicle with glass shower screen. Stainless steel heated towel rail.

Walk in wardrobe. Access to eaves storage. Light.



Total area: approx. 120.0 sq. metres (1291.5 sq. feet)





Property Location

Kirby Road, Dartford, Kent, DA2 6HA



Exterior

Front Garden: Block paved providing off street parking for two cars.

Rear Garden: Side pedestrian access. Access to brick built shed with power. Raised decked area. Outside electric point. . Flower beds.

Porcelain tiles. Grass. Rear covered seating area.

Additional Information

The boiler is located in the eaves accessed via the walk in wardrobe.

Council Tax Band C - Dartford

The garden faces North.

The property measures 126 Square metres

**FOR MORE INFORMATION
CONTACT US TODAY.**

01322 281281

Robinson Jackson
22 Market Street,
Dartford,
Kent DA1 1EZ

dartford@robinson-jackson.com



These particulars do not form part of an offer or contract and must not be relied upon as statements or representation of fact. Any areas, measurements, journey times or distances are approximate. The text, images, photographs and plans are for guidance only and are not necessarily comprehensive. It should not be assumed that the property has all necessary planning, building regulation or other consents and we have not tested any services, equipment or facilities. References to tenure are based on information supplied by the seller. Buyer should verify all information themselves by inspection or otherwise prior to a legal commitment to purchase. Photos and images are subject to copyright.