



Abbey Mount | Belvedere, Kent, DA17 5HR



Price on Application

Freehold

EPC = TBC

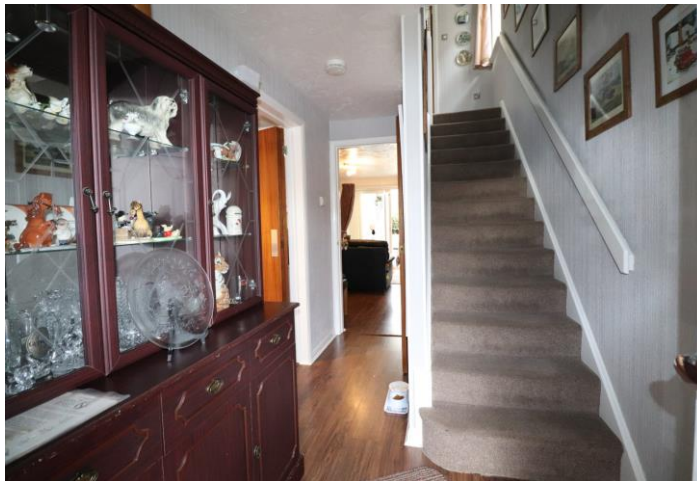
**ROBINSON-JACKSON**  
Our service will *move* you

## Abbey Mount, Belvedere

Situated in a very quiet cul-de-sac backing onto Abbey Woods is this newer style two bedroom family home. Do not delay in arranging a viewing at this rarely available property.

### Property Features

- Two double bedrooms
- Allocated parking
- Conservatory
- On bus routes
- Convenient for Nuxley village
- Catchment area for local schools



## Interior

**Entrance Hall** UPVC door to front, wood laminate flooring, radiator

**Lounge** 4.47m x 4.45m (14'8" x 14'7") Double glazed patio doors to rear, two radiators, wood laminate flooring, understairs cupboard

**Conservatory** UPVC double doors to garden, UPVC double glazed windows, vinyl flooring, space for tumble dryer

**Kitchen** 3.3m x 2.18m (10'10" x 7'2") Double glazed window to front, wall and base units, integrated oven and four ring gas hob, stainless steel sink and drainer unit with mixer tap, plumbing for washing machine and dishwasher,, space for undercounter fridge and freezer, part tiled walls, wood laminate flooring

**Landing** Double glazed window to side, radiator, storage cupboard

**Bedroom 1** 3.38m x 3.05m (11'1" x 10') Two double glazed windows to front, radiator, wood laminate flooring, storage cupboard

**Bedroom 2** 4.32m x 2.82m (14'2" x 9'3") Two double glazed windows to rear, laminate flooring, two radiators

**Bathroom** Low level wc, panelled bath with showers attachment and folding glass screen, vanity wash hand basin with storage, radiator, part tiled walls, vinyl flooring

## Exterior

**Garden** Mainly laid to lawn, paved patio area, raised flower and shrub borders, shed, outside tap, side access

**Parking** Allocated parking space





## Property Location

Abbey Mount, Belvedere, Kent, DA17 5HR



## Additional Information

At the heart of Belvedere is Nuxley Village – where you'll find shops, pubs, restaurants and the Robinson Jackson branch. Explore a little further and you'll find Lesnes Abbey, with its historic monastic ruins and formal gardens, and Bostall Woods with its protected bluebell fields and ancient trees.

Belvedere residents will be a manageable walk or one stop on the train line away from Abbey Wood's forthcoming Crossrail station.

FOR MORE INFORMATION  
CONTACT US TODAY.

01322 441010

Robinson Jackson  
61 Nuxley Road,  
Belvedere,  
Kent DA17 5JN

belvedere@robinson-jackson.com

