



Dunkery Road | Mottingham, SE9 4HS



Asking Price £450,000

Freehold

EPC = D

ROBINSON-JACKSON
Our service will *move* you

Dunkery Road, Nottingham

A well presented three double bedroom semi-detached house with loft conversion and kitchen extension. Located within a mile of three train stations and walking distance to local shops.

Property Features

- 22ft Lounge/Diner
- Modern Fitted Kitchen
- Ground Floor Cloakroom & Utility Room
- First Floor Bathroom
- 17ft Master Bedroom
- Double Glazing & Central Heating



Interior

Entrance Hall: Built in storage cupboard, dado rail and wood laminate flooring.

Lounge/Diner: 6.93m x 3.8m (22'9" x 12'6") Double glazed window to front, coved ceiling, storage cupboards, gas open flame feature fireplace, dado rail and wood laminate flooring. Two double glazed French doors to kitchen.

Kitchen/Breakfast Room: 3.84m x 3.35m (12'7" x 11') Fitted with a range of wall and base units with complimentary work surfaces over. Central island unit with breakfast bar, stainless steel oven, gas hob with extractor and tiled flooring. Two velux windows and double glazed French doors to rear garden.

Utility Room: 3.1 (10'2")m x 0.91 (3')m into 1.75 (5'9")m Fitted with a range of wall and base units with work surfaces over, space for washing machine, vinyl flooring.

Ground Floor Cloakroom/WC: Fitted with a Low level WC, and a wash basin, part tiled walls and tiled flooring.

Landing: Stairs to top floor and carpet as fitted.

Bedroom Three: 3.86m x 2.8m (12'8" x 9'2") Carpet as fitted.

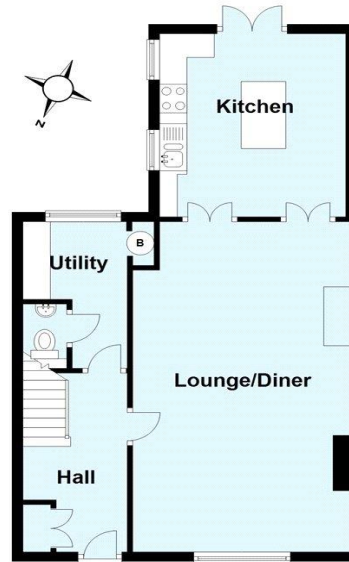
Bedroom One: 4.04m (13'3") x 2.64m (8'8") into wardrobes Built in wardrobes and wood laminate flooring.

Cot Room/Study: 2.34m x 1.4m (7'8" x 4'7") Carpet as fitted.

Bathroom: Fitted with a white three piece suite comprising of a vanity unit wash basin, cistern enclosed WC., jacuzzi bath with shower over and glass shower screen. Tiled splashback, heated towel rail and tiled flooring.

Bedroom Two: 5.33m x 4.1m (17'6" x 13'5") Double glazed velux window to front and rear, built in wardrobes, eaves storage and wood laminate flooring.

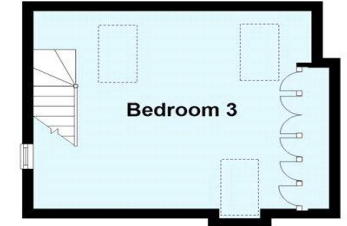
Ground Floor
Approx. 55.6 sq. metres (598.2 sq. feet)



First Floor
Approx. 41.6 sq. metres (448.1 sq. feet)



Second Floor
Approx. 22.5 sq. metres (241.9 sq. feet)



Total area: approx. 119.7 sq. metres (1288.2 sq. feet)





Property Location

Dunkery Road, Mottingham, SE9 4HS



Exterior

Rear Garden: Mainly laid to lawn with flag stone paved patio, decking area to rear and shed to remain. Gate to side.

**FOR MORE INFORMATION
CONTACT US TODAY.**

020 8859 9600
 Robinson Jackson
 2-4 Court Yard,
 Eltham,
 London SE9 5PZ
 eltham@robinson-jackson.com

