



Earlshall Road | Eltham Park, SE9 1PR



Asking Price £650,000

Freehold

EPC = E

**ROBINSON-JACKSON**  
Our service will *move* you

## Earlshall Road, London

Located on one of Elthams most sought after roads is this three bedroom end of terrace Corbett home. Benefitting a 19ft kitchen/diner, four piece bathroom suite, generous garden and driveway to front.

### Property Features

- 14ft Living Room
- 19ft Modern Kitchen/Diner
- Ground Floor WC
- First Floor Four Piece Bathroom Suite
- Generous Garden
- Off Street Parking



## Interior

**Entrance Hall:** Under stairs storage, dado rail and wood style laminate flooring.

**Living Room:** 4.39m x 3.87m (14'5" x 12'8") Double glazed bay window to front, feature fireplace, picture rail, original style coving and carpet as fitted.

**Kitchen/Diner:** 5.98m x 3.69m (19'7" x 12'1") Fitted with a range of modern wall and base units with complimentary work surfaces. Integrated double oven, gas hob, filter hood and space for appliances. Butler style sink, wood style laminate flooring and part tiled walls.

**Utility Room:** Space for appliances and wood style laminate flooring.

**Ground Floor WC:** Fitted with a low level WC and wash hand basin.

**Landing:** Access to loft and wood style laminate flooring.

**Bedroom 1:** 3.96m x 3.48m (13' x 11'5") Double glazed bay window, stripped and varnished floorboards.

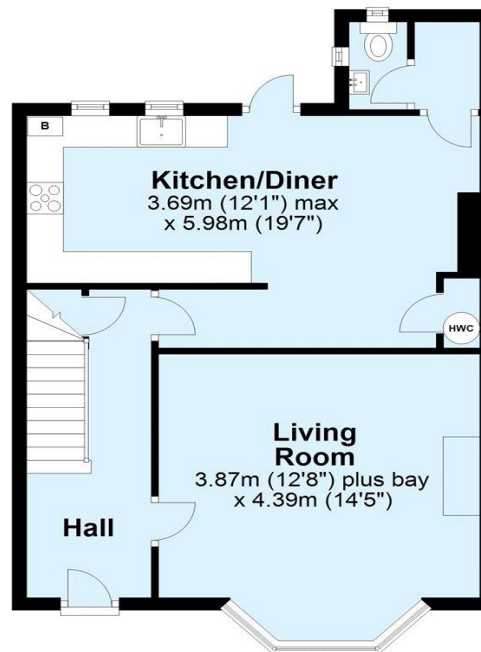
**Bedroom 2:** 3.70m x 3.48m (12'2" x 11'5") Double glazed window to rear, feature fireplace, stripped and varnished floorboards.

**Bedroom 3:** 3.02m x 2.61m (9'11" x 8'7") Double glazed window to front, stripped and varnished floorboards.

**Bathroom:** Fitted with a four piece suite comprising a low level WC, pedestal wash hand basin, panelled bath and walk in shower cubicle. Part tiled walls and wood style laminate flooring.

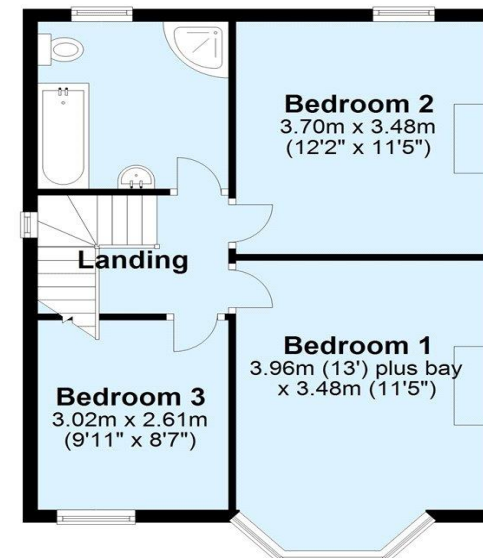
### Ground Floor

Approx. 50.5 sq. metres (544.1 sq. feet)



### First Floor

Approx. 48.5 sq. metres (522.0 sq. feet)



Total area: approx. 99.0 sq. metres (1066.1 sq. feet)

Plan produced using PlanUp.





## Property Location

Earlshall Road, Eltham Park, SE9 1PR



## Exterior

**Rear Garden:** Mainly laid to lawn with paved patio area and gate to side.

**Detached Garage:**

**Off Street Parking:** Driveway to front for two cars.

**FOR MORE INFORMATION  
CONTACT US TODAY.**

020 8859 9600

Robinson Jackson  
2-4 Court Yard,  
Eltham,  
London SE9 5PZ

eltham@robinson-jackson.com

