



Bromley Road
Catford
SE6 2NZ

Spacious and well presented Top floor super studio ideally located for public transport, shops and mainline station. Ideal for first time buyers or buy to let investors. The property comprises of a living area, mutli-functional area, kitchen and bathroom. Being sold with no onward chain.

- Period Conversion
- No Onward Chain
- Share of Freehold
- Ideal for FTB/BTL Investors
- Vacant Possession
- Close to Amenities

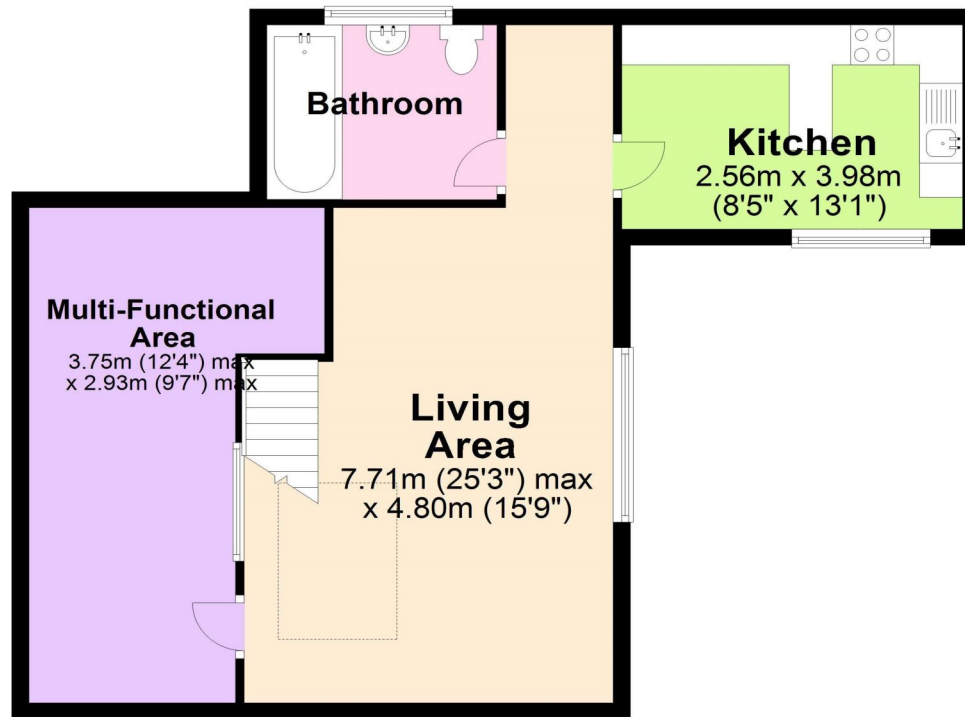
Guide Price: £225,000 - £250,000



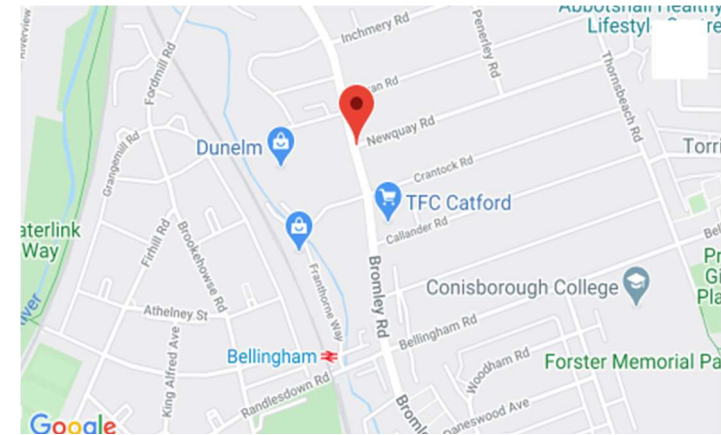
Share of Freehold EPC Rating: B

ROBINSON-JACKSON
Our service will *move* you

Top Floor



This floor plan is for illustrative purposes only. It is not drawn to scale. Measurements are approximate.
Plan produced using PlanUp.



Interior

Communal Entrance Part glazed communal entrance hall, carpet, stairs to top floor.

Entrance Hall Wooden entrance door, carpet, stairs to top floor.

Living Area 7.71m max x 4.80m max (25'3" max x 15'9" max) Double glazed bay window to rear, lantern roof, radiator, eaves storage, carpet, spotlights.

Multi-Functional Area 3.75m max x 2.93m max (12'4" max x 9'7" max) Eaves storage housing boiler, fitted carpet.

Kitchen 4m x 2.57m (13'1" x 8'5") Velux window to side and rear, range of fitted base units with surface over, one bowl stainless

steel sink unit with mixer tap, oven, hob and extractor to remain, radiator, vinyl flooring, spotlights.

Bathroom Velux window to rear, radiator, three piece bathroom suite comprising of: panelled bath with mixer tap and shower attachment, pedestal wash hand basin and low level wc, part tiled walls, eaves storage, vinyl flooring, spotlights.

Share of Freehold

Lease Term: 146 years remaining*

Service Charge: TBC*

(*to be verified by Vendors Solicitor)

Additional Information

Local Authority: London Borough of Lewisham

Council Tax: Band C (£1,812 pa)

Location

Catford is growing in popularity among commuters as journeys from its two mainline stations can take as little as 10 minutes to Central London.

The Broadway Theatre is an impressive Art Deco building, with a regular programme of shows and events. Catford's other premium attraction is Mountsfield Park – one of London's best open spaces and home of the annual People's Day. Catford's Black Cat sculpture remains a well-loved landmark.