



Worsley Bridge Road | Sydenham, London, SE26 5BE



OIEO £300,000

Leasehold

EPC = D

ROBINSON-JACKSON
Our service will *move* you

Worsley Bridge Road, Sydenham

Fantastic first floor split level modern purpose built flat offered chain free with three bedrooms, long lease, pleasant rear garden, ample storage and access to loft, set within a popular location, excellently located for Lower Sydenham Station, Bell Green Retail Park and the award winning Mayow Park

Property Features

- Three Bedrooms
- Modern Purpose Built Flat
- Chain Free
- Long Lease
- First Floor
- Split Level
- Pleasant Rear Garden
- Access to loft
- Excellently located for Lower Sydenham Station, Bell Green Retail Park and the award winning Mayow Park



Interior

Lounge Double glazed window to rear, laminate flooring, radiator

Kitchen Double glazed window to rear, range of wall and base units, granite work surface, stainless steel sink unit with drainer, integrated stainless steel oven, hob and extractor, space for fridge/freezer, integrated washing machine, laminate flooring, radiator

Master Bedroom Double glazed window to front, laminate flooring, radiator

Bedroom Two Double glazed window to front, laminate flooring

Bedroom Three Double glazed window to rear, built in cupboard, laminate flooring, radiator

Bathroom Double glazed window to front, walk in shower cubicle, wash hand basin, low flush WC, vinyl flooring, heated towel rail

Exterior

Pleasant rear garden mainly laid to lawn with side access

Additional Information

Double glazing

Central heating

Ample storage

Access to loft

First floor

Chain free

Long Lease

Leasehold

Split level

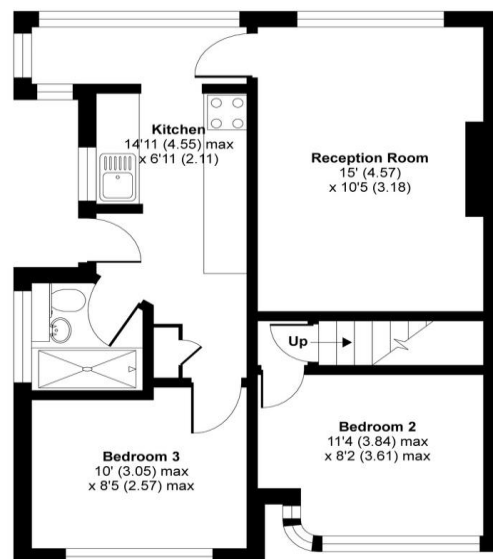
Contemporary designed

Excellently located for Lower Sydenham Station, Bell Green Retail Park and the award winning Mayow Park

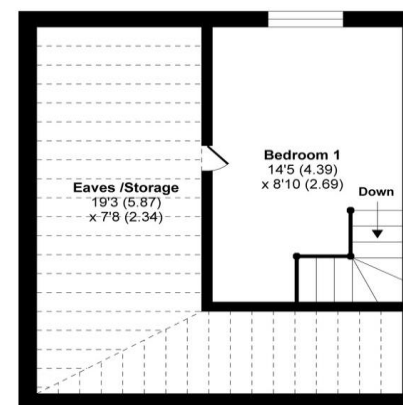


Denotes restricted head height

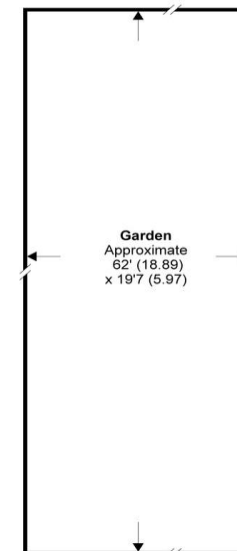
Approximate Area = 660 sq ft / 61.3 sq m
Limited Use Area(s) = 200 sq ft / 18.6 sq m
Total = 860 sq ft / 79.9 sq m
For identification only - Not to scale



GROUND FLOOR



FIRST FLOOR



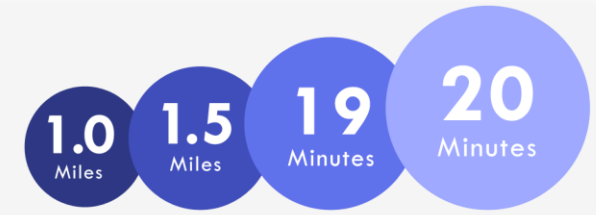
Floor plan produced in accordance with RICS Property Measurement Standards incorporating International Property Measurement Standards (IPMS2 Residential). ©nichecom 2021. Produced for Robinson Jackson.





Property Location

Worsley Bridge Road, Sydenham, London, SE26 5BE



Horniman Museum & Gardens Crystal Palace Canada Water Station Train to London Bridge

*All distances from branch postcode. Train time from nearest station.

**FOR MORE INFORMATION
CONTACT US TODAY.**

020 8776 6660

Robinson Jackson
256 Kirkdale,
Sydenham,
London SE26 4NL

sydenham@robinson-jackson.com

