



Birkbeck Road | Beckenham, BR3 4SN



3



3



1

OIEO £400,000

Leasehold

EPC = D

ROBINSON-JACKSON
Our service will *move* you

Birkbeck Road, Beckenham

Delightful ground floor split level modern purpose built maisonette offered chain free with three double bedrooms, three bathrooms, open plan kitchen with bamboo work surfaces, and off street parking, set within a sought after location, ideal for Kent House and Clock House Station, local independent shops, eateries and bars, Cator Park and Churchfield Recreation Grounds

Property Features

- Three Double Bedrooms
- Modern Purpose-Built Maisonette
- Chain Free
- Open Plan Lounge
- Leasehold
- Ground Floor
- Split Level
- Off Street Parking and Private Courtyard
- Three bathrooms
- Ideally located for Kent House and Clock House Station, local independent shops, eateries and bars, Cator Park and Churchfield Recreation Grounds



Interior

Gated Communal Entrance

Entrance Hall Built in cupboard, wood flooring, radiator

Lounge Double glazed window to front, wood flooring, radiator

Kitchen Double glazed window to rear, range of wall and base units, bamboo work surface, stainless steel sink unit with drainer, integrated oven, hob and extractor, integrated fridge/freezer, washing machine and dishwasher, wood flooring

Bathroom Panelled bath, built in gas shower, wall mounted wash hand basin, low flush WC, tiled flooring, heated towel rail

Master Bedroom Double glazed window to side, wood flooring, radiator, door leading to:

Ensuite Shower Walk in shower cubicle, low flush WC, tiled flooring, heated towel rail

Bedroom Two Double glazed window to rear, carpet, radiator

Bedroom Three Double glazed window to side, carpet, radiator

Shower Room Walk in shower cubicle, tiled flooring, heated towel rail

Exterior

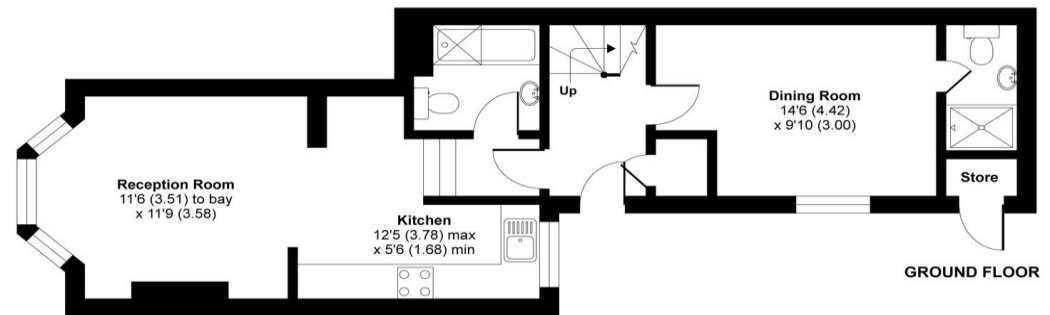
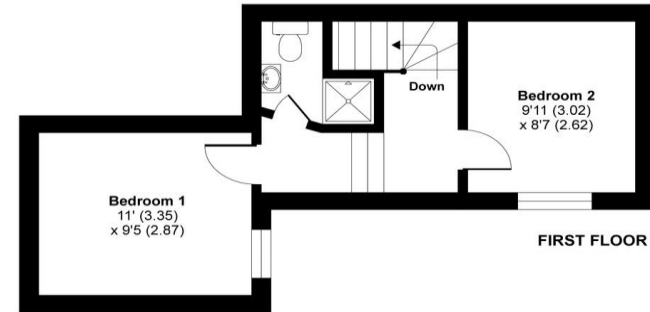
Off street parking

Gated complex

Private courtyard



Approximate Area = 855 sq ft / 79.4 sq m
Store = 7 sq ft / 0.6 sq m
Total = 862 sq ft / 80 sq m
For identification only - Not to scale



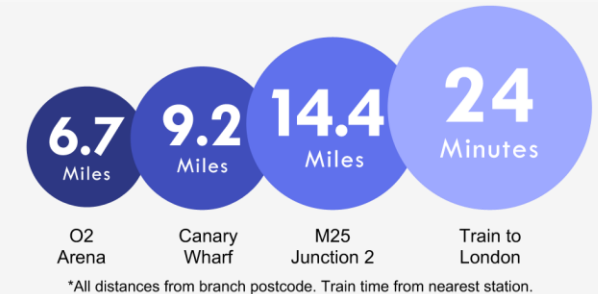
Floor plan produced in accordance with RICS Property Measurement Standards incorporating International Property Measurement Standards (IPMS2 Residential). © nichecom 2021. Produced for Robinson Jackson.





Property Location

Birkbeck Road, Beckenham, BR3 4SN



Additional Information

Double glazing	Split Level
Gas central heating	Three bathrooms
Laminate flooring where stated	Entry Phone
Chain Free	Integrated Appliances
Sought After Location	High Specification
Leasehold	Ideal for Kent House and Clock House Station, local independent shops, eateries and bars, Cator Park and Churchfields Recreation Ground
Ground Floor	

**FOR MORE INFORMATION
CONTACT US TODAY.**

020 8776 6660
Robinson Jackson
256 Kirkdale,
Sydenham,
London SE26 4NL
sydenham@robinson-jackson.com



These particulars do not form part of an offer or contract and must not be relied upon as statements or representation of fact. Any areas, measurements, journey times or distances are approximate. The text, images, photographs and plans are for guidance only and are not necessarily comprehensive. It should not be assumed that the property has all necessary planning, building regulation or other consents and we have not tested any services, equipment or facilities. References to tenure are based on information supplied by the seller. Buyer should verify all information themselves by inspection or otherwise prior to a legal commitment to purchase. Photos and images are subject to copyright.