



Westwood Hill | SE26 6NY

 3  0  0 Asking Price £300,000 To be advised

ROBINSON-JACKSON
Our service will *move* you

Westwood Hill,

Split level purpose built flat offered chain free with three double bedrooms, leasehold, residents parking, double glazing, in need of TLC offering fantastic potential set within a popular location, ideal for Sydenham Station, conveniently located for local high street shops and amenities, Crystal Palace Park and Sydenham Hill Wood & Cox 's Walk

Property Features

- Council Tax:
- EPC Rating: D
- Three Double Bedrooms
- Modern Purpose Built Flat
- Chain Free
- Leasehold
- Split Level
- Residents Parking
- Double Glazing
- In Need of TLC
- Fantastic Potential
- Ideal for Sydenham Station
- Conveniently located for local high street shops and amenities, Crystal Palace Park and Sydenham Hill Wood & Cox 's Walk



Interior

Communal Entrance

Entrance Hall Built in cupboard, vinyl flooring, radiator

Lounge Double glazed windows to side and rear, carpet, radiator

Kitchen Double glazed windows to rear, range of wall and base units, laminate work surface, stainless steel sink and drainer, oven, fridge freezer, plumbed for washing machine, vinyl flooring, radiator

Master Bedroom Double glazed windows to side and rear, carpet, radiator

Bedroom Two Double glazed windows to side, carpet, radiator

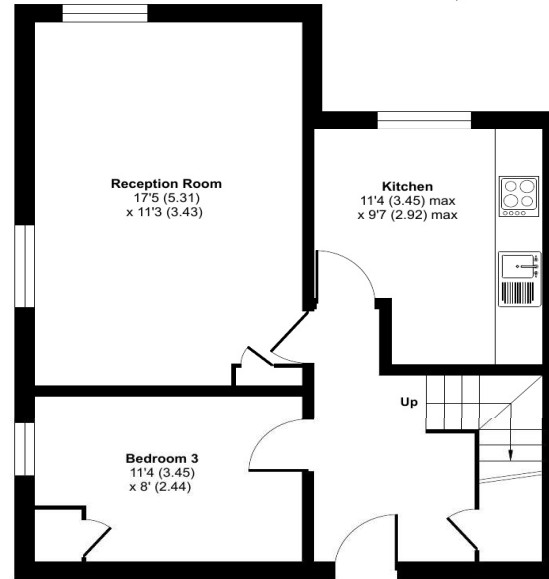
Bedroom Three Double glazed windows to side, built in cupboard, carpet, radiator

Bathroom Double glazed windows, panelled bath, built in electric shower, wash hand basin, vinyl flooring

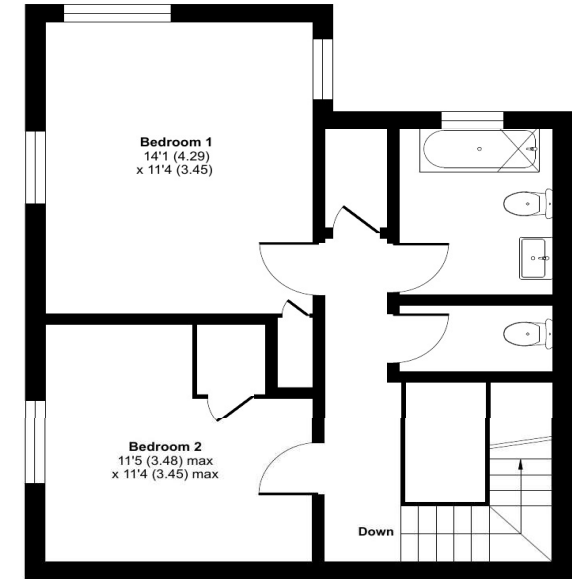
Separate WC Low flush wc, vinyl flooring

Approximate Area = 1012 sq ft / 94 sq m

For identification only - Not to scale



SECOND FLOOR



THIRD FLOOR



Floor plan produced in accordance with RICS Property Measurement Standards incorporating International Property Measurement Standards (IPMS2 Residential). © nchecon 2022. Produced for Robinson Jackson.

To be advised Information

Time remaining on lease: Not Available

Ground Rent: Not Available

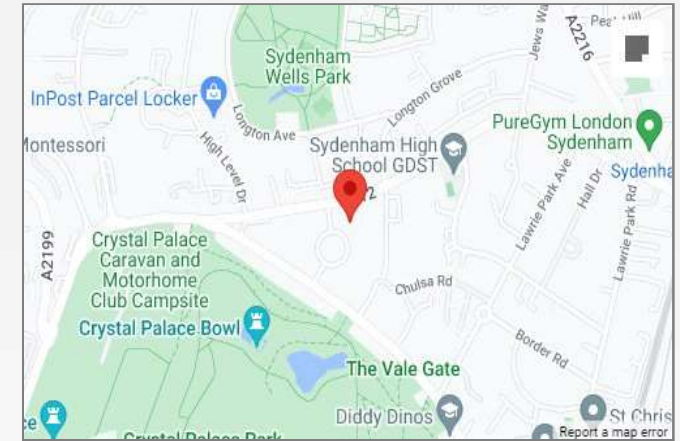
Service Charge: Not Available





Property Location

Westwood Hill, SE26 6NY



Additional Information

Double glazing

Central heating

Chain free

Leasehold

Split level

In need of TLC

Fantastic potential

Ideal for Sydenham Station

Conveniently located for local high street shops and amenities, Crystal Palace Park and Sydenham Hill Wood & Cox 's Walk

**FOR MORE INFORMATION
CONTACT US TODAY.**

020 8776 6660

Robinson Jackson
256 Kirkdale,
Sydenham,
London SE26 4NL

sydenham@robinson-jackson.com



These particulars do not form part of an offer or contract and must not be relied upon as statements or representation of fact. Any areas, measurements, journey times or distances are approximate. The text, images, photographs and plans are for guidance only and are not necessarily comprehensive. It should not be assumed that the property has all necessary planning, building regulation or other consents and we have not tested any services, equipment or facilities. References to tenure are based on information supplied by the seller. Buyer should verify all information themselves by inspection or otherwise prior to a legal commitment to purchase. Photos and images are subject to copyright.