



Stafford Gardens | Maidstone, Kent, ME15 6GZ



Price on Application

Leasehold

EPC = B

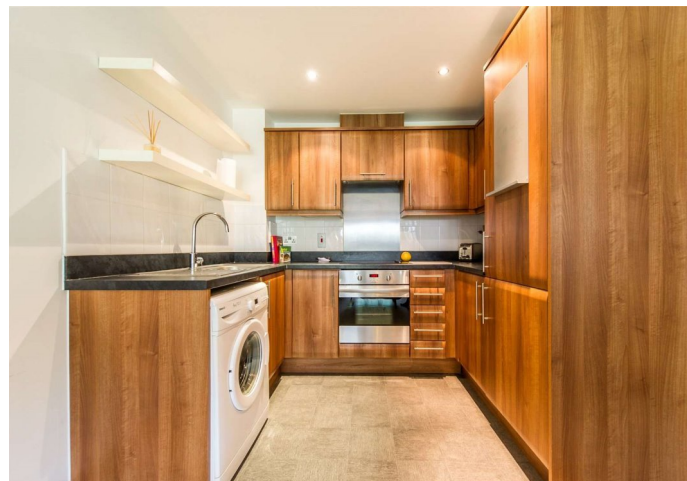
ROBINSON MICHAEL & JACKSON
Our service will *move* you

Stafford Gardens, Maidstone

Perfect Pad! Ideal opportunity to purchase this 1 bedroom Ground Floor Apartment in an Ideal Location, offering Modern Decor throughout, with the added benefit of Allocated Parking, Don't Miss Out.

Property Features

- Close Proximity to M20/M2 Motorway Links
- Walking Distance to Train stations and Amenities
- Allocated Parking
- Ideal First Time Buy/Investment
- Popular Location
- Modern Throughout



Interior

Entrance Hall

Kitchen / Living Room 6.86m x 3.43m (22'6" x 11'3")

Bedroom 1 4.22m x 3.48m (13'10" x 11'5")

Bathroom 2.26m x 1.75m (7'5" x 5'9")

Exterior

Parking: 1 Allocated Parking Space.

Communal Garden.

Leasehold Information

COUNCIL TAX BAND C

Ground Floor



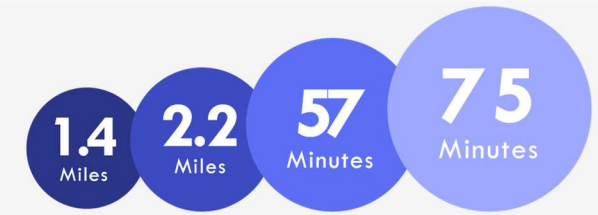
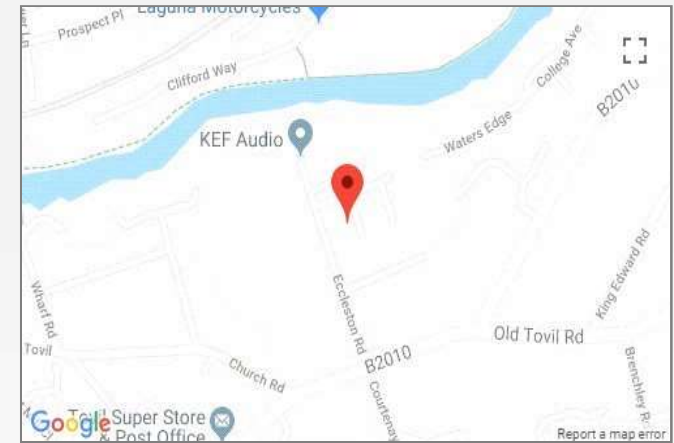
Please be advised this plan is offered for marketing purposes only. It can not be relied upon for exact or precise measurements, angles, window or door openings. Whilst every effort is made to ensure the accuracy the company or provider accepts no responsibility for the content.
Plan produced using PlanUp.





Property Location

Stafford Gardens, Maidstone, Kent, ME15 6GZ



Maidstone East Train Station M20 Junction 7 Train to London Victoria Train to St Pancreas

*All distances from the ME15 6AT postcode. Train time from Maidstone East station.

**FOR MORE INFORMATION
CONTACT US TODAY.**

01622 476666
Robinson Michael & Jackson
15A King Street
Maidstone,
Kent ME14 1BA
maidstone@robinson-jackson.com

