



Stanhope Road | Swanscombe, Kent, DA10 0AL



Guide Price: £300,000 Freehold

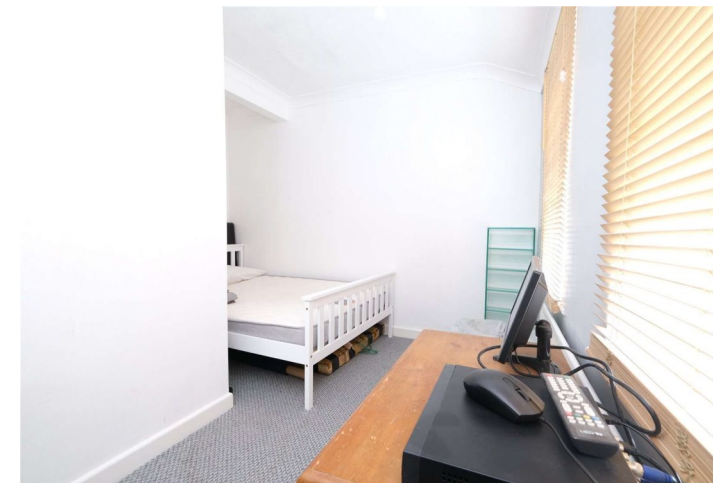
ROBINSON-JACKSON
Our service will *move* you

Stanhope Road, Swanscombe

Robinson Jackson are happy to offer this well presented two bedroom end of terrace property situated within walking distance to Swanscombe train station and close proximity to Ebbsfleet International. Featuring two reception rooms, ground floor bathroom, off-street parking and garage. The property also has the potential to extend.

Property Features

- End of Terrace
- Ideal First time buy or Investment
- Close to Station
- Recently Renovated
- Two Double Bedrooms
- Garage and Off Street Parking



Interior

Entrance Porch: Entrance door. Double glazed windows to side.

Lounge: 6.5m x 3.4m (21'4" x 11'2") Double glazed window to front. Radiator. Laminate flooring.

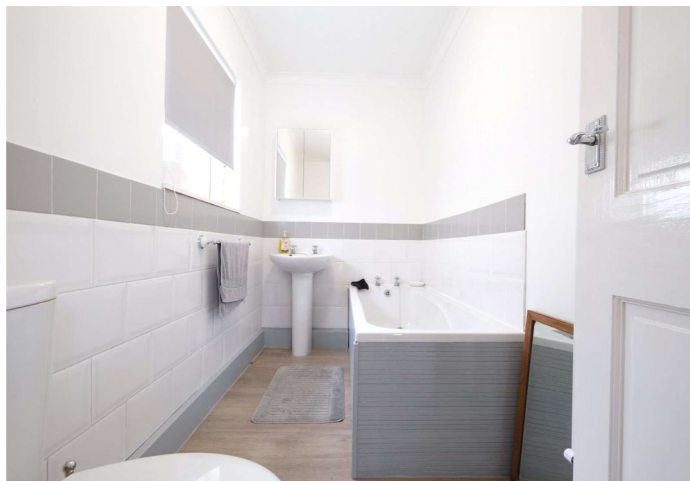
Kitchen: 3.23m x 2.4m (10'7" x 7'10") Double glazed window to rear. Double glazed patio door to garden. Range of matching wall and base units with complimentary work surface over. Wall mounted boiler. Space for cooker. Space and plumbing for washing machine. Space for fridge freezer. Part tiled walls. Laminate flooring.

Bathroom: 3m x 1.5m (9'10" x 4'11") Frosted double glazed window to side. Low level WC. Pedestal wash hand basin. Panelled bath. Heated towel rail. Part tiled walls. Tiled flooring.

Landing: Access to loft. Spotlights. Carpet.

Bedroom One: 3.02m x 2.54m (9'11" x 8'4") Double glazed window to front. Radiator. Carpet.

Bedroom Two: 3.38m x 3.38m (11'1" x 11'1") Two double glazed windows to rear. Radiator. Carpet.





Exterior

Rear Garden - Approximately 40ft.

Patio area. Shed. Outside lighting. Outside tap. Rear access.

Security cameras.

Additional Information

Dartford Borough Council - Tax Band B

Boiler located in kitchen cupboard

Total floor area: TBC

Property Location

Stanhope Road, Swanscombe, Kent, DA10 0AL



FOR MORE INFORMATION
CONTACT US TODAY.

01322 624440

Robinson Jackson
39 High Street,
Swanscombe
Kent,
DA10 0AG

swanscombe@robinson-jackson.com

