



Foots Cray High Street | Sidcup, Kent, DA14 5HN



1



1



1

Asking Price: £265,000 Leasehold

EPC = C

ROBINSON-JACKSON
Our service will *move* you

Foots Cray High Street, Sidcup

Set in a modern development, is this
GROUND FLOOR APARTMENT. Boasting
allocated secure parking and a long lease,
ideally located for all local amenities. Call to
book your viewing.

Property Features

- Ground Floor Apartment
- Long Lease over 900 years
- One Bedroom
- Open Plan Lounge /Diner
- Allocated Secure Parking
- Gross Internal Area: 57m2
- Council Tax: C



Interior

Entrance Hall Hardwood door to front, radiator, laminate flooring.

Walk-In Storage Cupboard 1.88m x 1.37m (6'2" x 4'6") Large walk in storage cupboard with power and light.

Lounge/Dining Room 4.95m x 4.32m (16'3" x 14'2") Double glazed french doors to rear, double glazed window to rear, two radiators, laminate flooring.

Kitchen 3.12m x 3.1m (10'3" x 10'2") Matching range of wall and base units including cupboards, drawers and worktops, stainless steel 1 1/2 bowl sink unit with drainer and mixer tap, integrated oven with gas hob and extractor hood above, plumbed for washing machine, space for fridge/freezer and dishwasher, wall mounted boiler, vinyl flooring.

Bedroom 4.34m x 2.82m (14'3" x 9'3") Two double glazed windows to rear, radiator, carpet.

Bathroom 2.62m x 1.65m (8'7" x 5'5") Panelled bath with shower over, wall mounted wash hand basin, low level W/C, part tiled walls, ceramic tiled flooring.

Exterior

Private Rear Patio Area Paved patio area.

Parking Underground parking with allocated parking bay.

Leasehold Information

Unexpired term of lease: Approximately 994 years

Original start and lease term: 29th September 2017

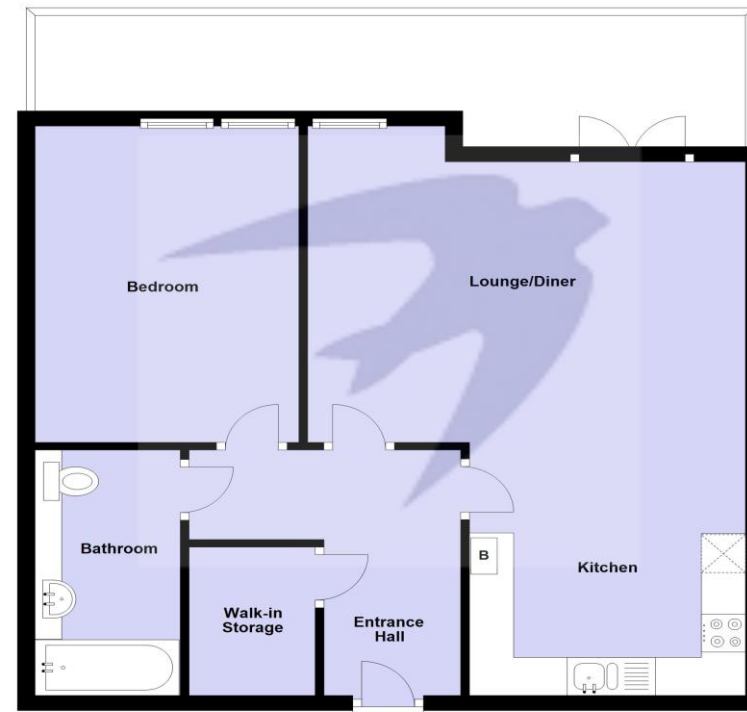
Current ground rent: Approximately £150 per annum

Current service charge: Approximately £112.80 per month

Next ground rent review: TBC

All the above needs to be verified by your solicitor.

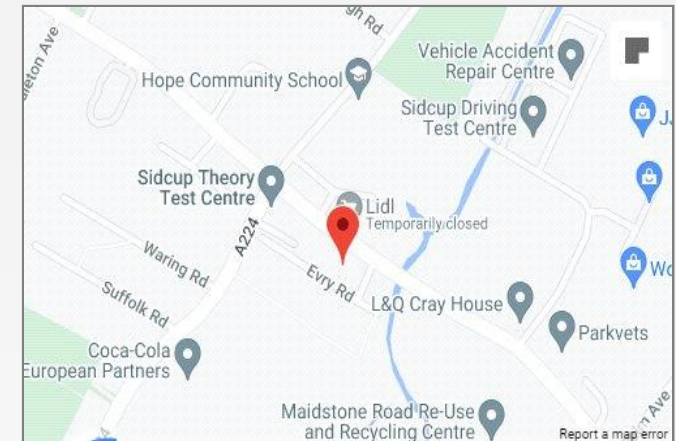
Ground Floor





Property Location

Foots Cray High Street, Sidcup, Kent, DA14 5HN



Additional Information

Sidcup is located in the London Borough of Bexley. It enjoys a busy high street, a library, supermarkets, a train station, the borough's main hospital, good schools and leisure facilities.

Commuters use Sidcup train station for a direct service into Central London, with journey times from 18 minutes. Sidcup is brimming with pubs and restaurants, with friendly 'locals' serving the community.

**FOR MORE INFORMATION
CONTACT US TODAY.**

020 8298 0500
Robinson Jackson
1 Wellington Parade,
Blackfen,
Kent DA15 9NB
| blackfen@robinson-jackson.com

