



West Street | Gravesend, Kent, DA11 0BP

 2  2  1 Offers in excess of £210,000 Leasehold

**ROBINSON MICHAEL & JACKSON**   
Our service will *move* you

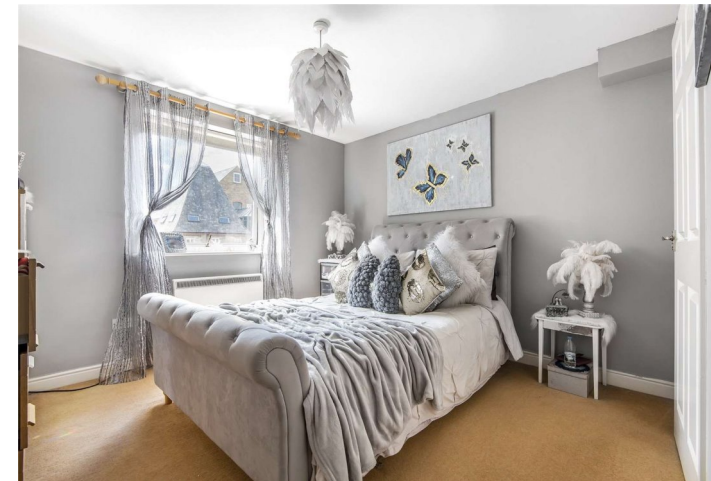


## West Street, Gravesend

Investment Opportunity. Sold with a tenant in situ is this two-bedroom first floor river front apartment with balcony, situated in the popular Russell Quay Development which has its own car park/

### Property Features

- Council Tax: C
- EPC Rating: C
- River Views
- Double Glazing
- Gas Central Heating
- En-Suite Shower Room
- Private Car Park
- Tenant in Situ paying £825 pcm
- No Chain involved



## Interior

**Entrance:** Entrance door to entrance hall.

**Entrance Hall:** Carpet. Doors to: -

**Lounge:** 4.52m x 4.47m (14'10" x 14'8") Double glazed French doors to balcony. Double glazed window. Electric heater

**Balcony:** Balcony over-looking River Thames.

**Kitchen:** 2.57m x 2.16m (8'5" x 7'1") Double glazed window to rear overlooking River Thames. Fitted wall and base units with work surface over. Space for appliances. 1 1/2 bowl sink and drainer unit with mixer tap. Tiled splash back.

**Bedroom 1:** 3.28m x 3.18m (10'9" x 10'5") Double glazed window to front. Carpet. Electric heater.

**En-suite:** 1.98m x 0.74m (6'6" x 2'5") Frosted window to side. Suite comprising tiled shower cubicle. Wash hand basin. Low level w.c. Vinyl flooring.

**Bedroom 2:** 3.15m x 2.3m (10'4" x 7'7") Double glazed window to front. Carpet. Electric heater.

**Bathroom:** 3.43m x 1.68m (11'3" x 5'6") Frosted double glazed window to side. Suite comprising panelled bath. Wash hand basin. Concealed w.c. Vinyl flooring. Partly tiled walls. Built-in storage cupboard.

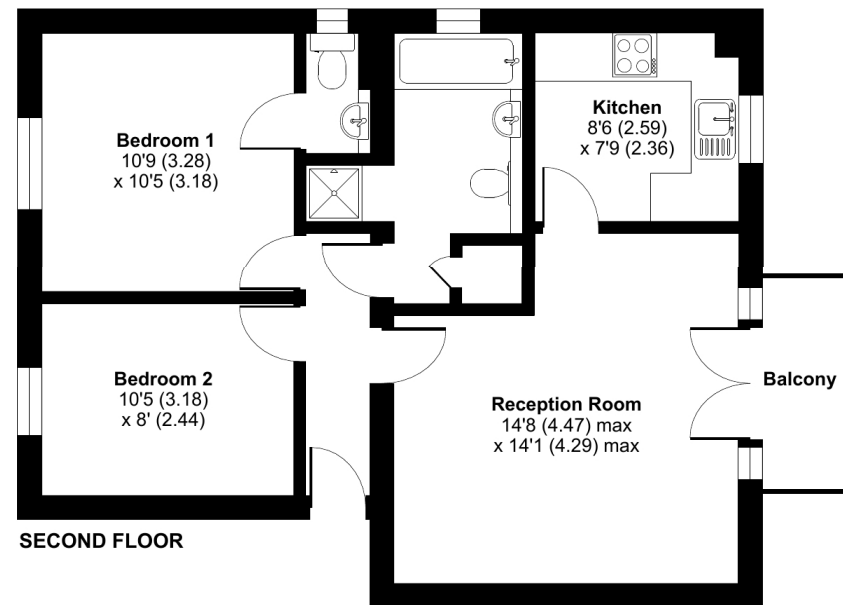
## Exterior

**Parking:** Private car park.

## Russell Quay, West Street, Gravesend, DA11

Approximate Area = 613 sq ft / 56.9 sq m

For identification only - Not to scale







## Leasehold Information

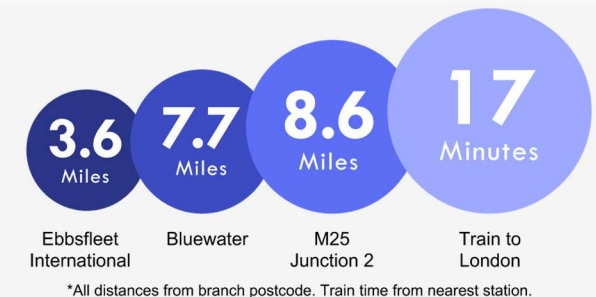
Lease: 78 Years – Unexpired

Service Charge: £1,478.00 Per Annum

Ground Rent: £120.00 Per Annum (Paid 6 monthly)

## Property Location

West Street, Gravesend, Kent, DA11 0BP



**FOR MORE INFORMATION  
CONTACT US TODAY.**

01474 333111  
Robinson Michael & Jackson  
21 King Street,  
Gravesend,  
Kent DA12 2EB  
gravesend@robinson-jackson.com



These particulars do not form part of an offer or contract and must not be relied upon as statements or representation of fact. Any areas, measurements, journey times or distances are approximate. The text, images, photographs and plans are for guidance only and are not necessarily comprehensive. It should not be assumed that the property has all necessary planning, building regulation or other consents and we have not tested any services, equipment or facilities. References to tenure are based on information supplied by the seller. Buyer should verify all information themselves by inspection or otherwise prior to a legal commitment to purchase. Photos and images are subject to copyright.