



The Shades | Rochester, Kent, ME2 2UD



Guide Price £550,000 to £600,000

Freehold

**ROBINSON MICHAEL & JACKSON**

Our service will *move* you

# The Shades, Rochester

Guide Price £550,000-£600,000

This four bedroom detached property is being offered to the market with no onward chain. Benefitting from driveway and garage located in the sought after area of Strood.

## Property Features

- Council Tax: E
- EPC Rating: F
- No Chain
- Easy access to A2/M2 motorway links
- Four bedrooms
- Garage & Driveway
- Sought after area
- 1490 Square feet



## Interior

**Lounge** 3.63m x 5.9m (11'11" x 19'4") Carpet, coved ceiling, gas fire, double glazed window to front, double glazed French doors to rear leading to conservatory.

**Dining Room** 2.84m x 3.35m (9'4" x 11') Wood flooring, double glazed window to rear, coved ceiling.

**Conservatory** Tiled floor, double glazed door to side leading to rear garden.

**Kitchen** 3.05m x 3.68m (10' x 12'1") Vinyl flooring, wall to base units with roll over work surface, double glazed French doors to rear, gas hob with extractor fan, double glazed window to side, dish washer, fridge freezer, oven, microwave.

**Bedroom One** 2.57m x 4.57m (8'5" x 15') Carpet, double glazed window to rear with shutter blinds, coved ceiling, radiator, fitted wardrobes.

**Bedroom Two** 3.76m x 2.77m (12'4" x 9'1") Carpet, radiator, double glazed window to front with shutter blinds, coved ceiling.

**Bedroom Three** 3.6m x 2.67m (11'10" x 8'9") Laminate flooring, storage, double glazed window to side, radiator.

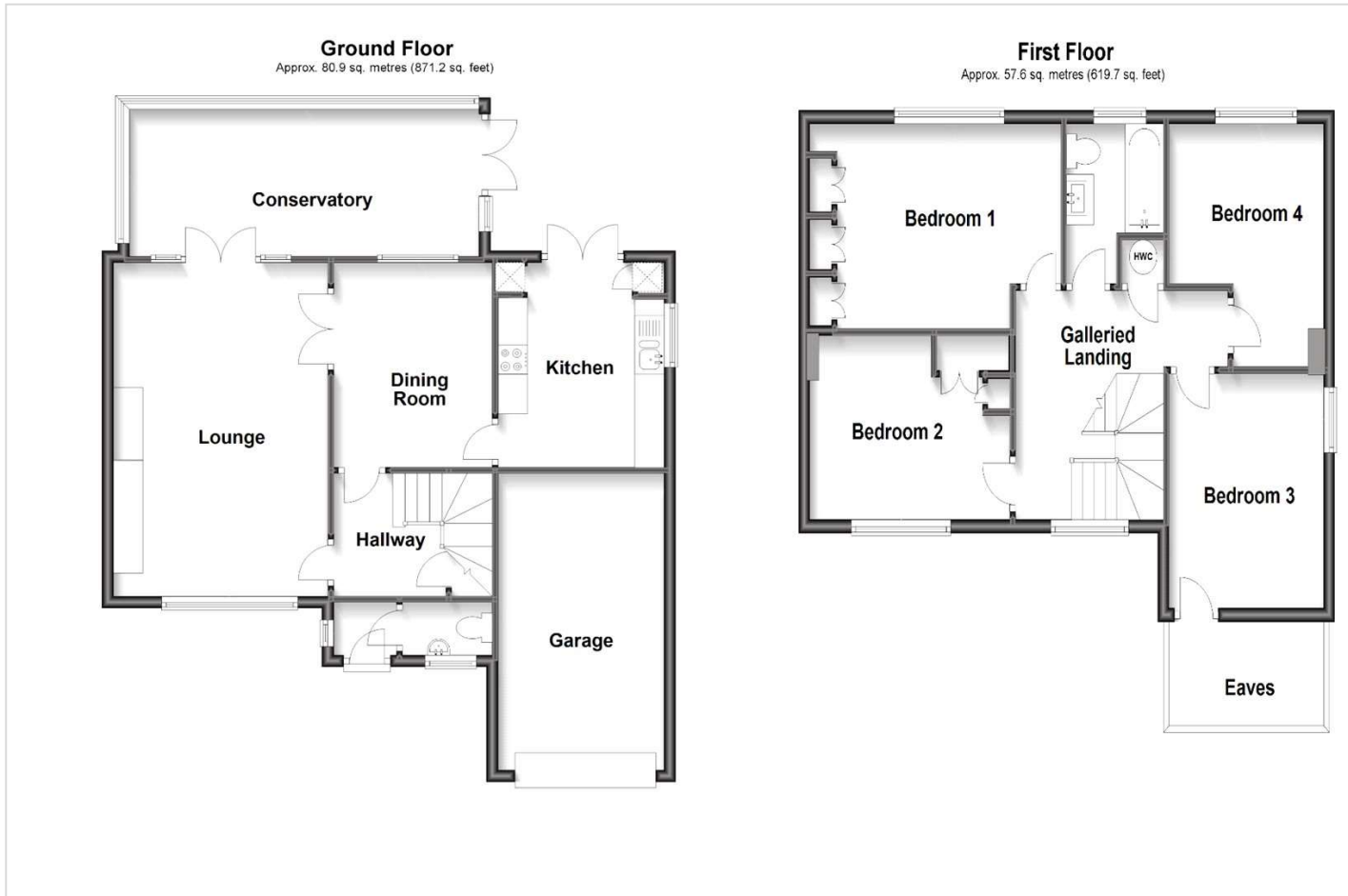
**Bedroom Four** 3.48m x 2.87m (11'5" x 9'5") Laminate flooring, double glazed window to rear with shutter blinds, radiator, coved ceiling.

**Bathroom** 2.51m x 1.8m (8'3" x 5'11") Tiled floor to ceiling, double glazed window to rear, panelled bath with shower over, sink basin with mixer tap, low level w/c, radiator.

## Exterior

**Rear garden** Patio, Lawn area, side access, shed.

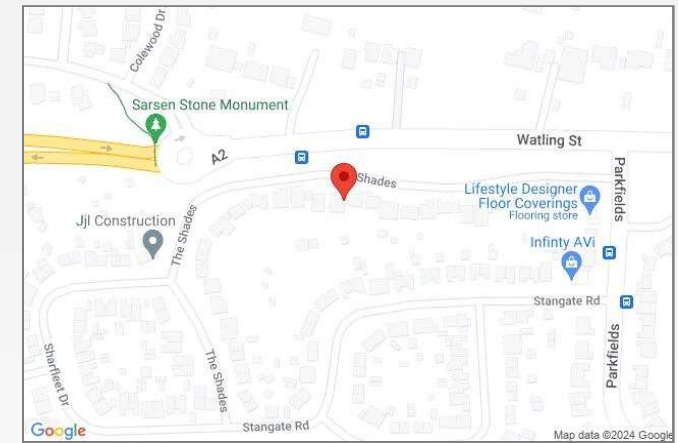
**Garage** Electric roller door, block paved driveway.





## Property Location

The Shades, Rochester, Kent, ME2 2UD



 **Scan for the latest properties...** 

 Follow us on **facebook** for early access to new properties for sale.



## Additional Information

Strood is a town in the unitary authority of Medway in Kent, South East England. It lies on the northwest bank of the River Medway at its lowest bridging point.

Strood has a main high street which includes many large retailers including B&M, Marks and Spencer's Foodhall & Matalan. The high street is only a short drive away from the main A2/M2 motorway links.

## Key facts for buyers



**FOR MORE INFORMATION  
CONTACT US TODAY.**

01634 722777  
Robinson Michael & Jackson  
109 High Street  
Strood,  
Kent ME2 4TJ  
strood@robinson-jackson.com

