



**ROBINSON
JACKSON**
LOCAL OFFICE
01322 281281
FOR SALE



Manor Close | Wilmington, Dartford, DA2 7AR

 3  1  1

Guide Price £450,000
Freehold

ROBINSON-JACKSON
Our service will *move* you

Manor Close, Wilmington

Robinson Jackson are pleased to offer this three bedroom semi detached family home located on a sought after no through road in Wilmington within close proximity to popular Schools. Benefits include..

Property Features

- Council Tax: E
- EPC Rating: D
- Popular Wilmington Location
- Catchment for Sought After Grammar & Primary Schools
- Potential to Extend (STPP)
- 0.9 Miles to Local Shops including Dennis of Bexley
- A Variety of Country Walks Nearby, Dartford Heath



Interior

Entrance Hall Frosted double glazed window to side. Radiator. Carpet.

Through Lounge 7.57 (24'10")m x 3.63 (11'11")m nr to 2.57 (8'5")m
Double glazed window to front. Double glazed sliding doors to rear. Radiators. Feature fireplace. Carpet.

Kitchen 3.25m x 2.84m (10'8" x 9'4") Double glazed window and door to rear. Range of wall and base units with complementary worksurfaces over incorporating stainless steel sink drainer. Space for cooker. Space for fridge freezer. Plumbed for dishwasher and washing machine.. Wall mounted boiler. Part tiled walls. Vinyl flooring.

Conservatory Windows to rear and side. Door to rear. Vinyl flooring.

Landing Frosted double glazed window to side. Loft access. Carpet.

Bedroom One 4.34m x 3.05m (14'3" x 10') Double glazed window to front. Radiator. Carpet.

Bedroom Two 3.53m x 3.05m (11'7" x 10') Double glazed window to rear. Radiator. Airing cupboard. Carpet.

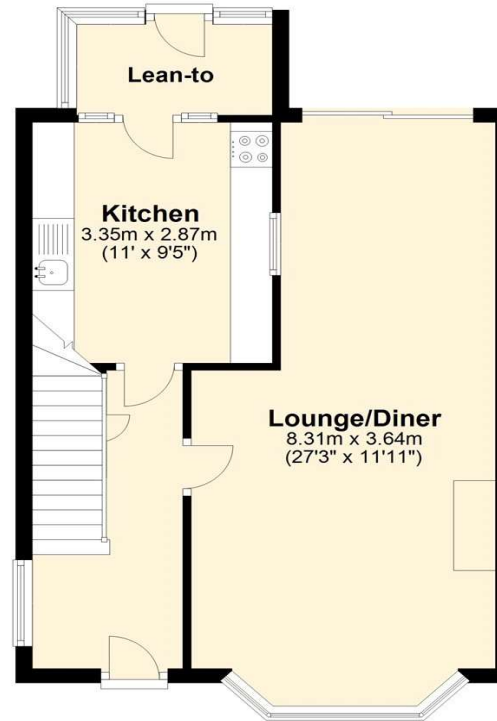
Bedroom Three 2.7m x 2.44m (8'10" x 8') Double glazed window to front. Radiator. Carpet.

Bathroom Frosted double glazed window to side. Pedestal wash hand basin. Panelled bath with shower over. Radiator. Part tiled walls. Vinyl flooring.

Separate Wc Frosted double glazed window to side. Low level Wc. Part tiled walls. Vinyl flooring.

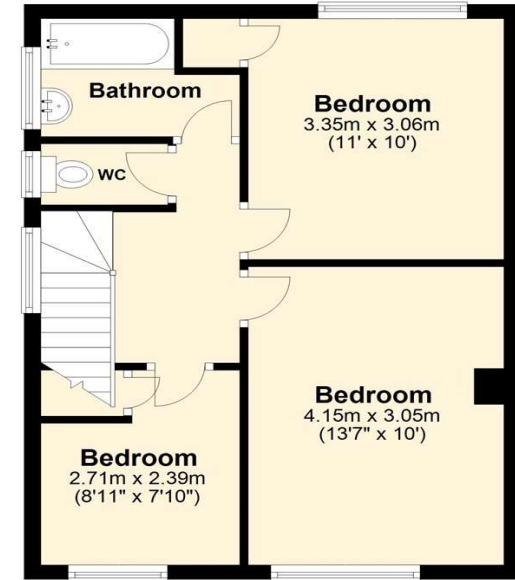
Ground Floor

Approx. 45.7 sq. metres (492.4 sq. feet)



First Floor

Approx. 42.1 sq. metres (453.0 sq. feet)



Total area: approx. 87.8 sq. metres (945.4 sq. feet)





Additional Information

The boiler is located in the Kitchen

The property measures: 88 Sqm

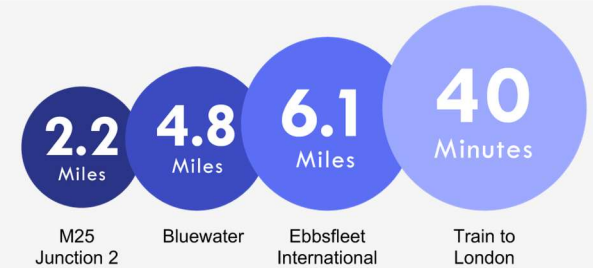
Exterior

Front Garden: Lawn. Hard standing for off street parking. Gated access to rear garden.

Rear Garden: Approx 40'. Patio. Garage. Lawn. Established beds. Side gated access.

Property Location

Manor Close, Wilmington, Dartford, DA2 7AR



*All distances from branch postcode. Train time from nearest station.

**FOR MORE INFORMATION
CONTACT US TODAY.**

01322 281281

Robinson Jackson
22 Market Street,
Dartford,
Kent DA1 1EZ

dartford@robinson-jackson.com

