



Kirby Road | Dartford, Kent, DA2 6HF



Guide Price £400,000 to £425,000

Freehold

ROBINSON-JACKSON
Our service will *move* you

Kirby Road, Dartford

Robinson Jackson are pleased to offer to the market this end of terrace house. The property boasts off street parking, garage and the possibility to extend (STPP)

Property Features

- Council Tax: C
- EPC Rating: C
- Chain Free
- End of Terrace House
- Potential to Extend STPP
- Summer House with Power and Lighting
- Off Street Parking and Garage to Rear
- Ideal Family Home



Interior

Porch Wooden glazed doors to front, single glazed windows to sides.

Entrance Hall Double glazed door to front, double glazed window to side, stairs to First floor, coved ceiling, laminate wood flooring, radiator.

Lounge 4.34mx3.63m (14'3"x11'11") Double glazed bay window to front, coved ceiling, fitted carpet feature fireplace, Radiator.

Kitchen Diner 5.6mx3.4m (18'4"x11'2") Double glazed window to rear, double glazed double doors to rear, range of fitted wall and base units with complimentary worktops, stainless steel double oven, stainless-steel gas hob with extractor over, plumbed for washing machine, stainless steel one and half bowl sink with mixer taps, walk mounted boiler, storage cupboard tiled splash backs, tiled floor.

Landing Coved ceiling, storage cupboard, fitted carpet. Loft access.

Bedroom 1 3.73mx2.97m (12'3"x9'9") Double glazed window to front, coved ceiling, radiator, fitted carpet.

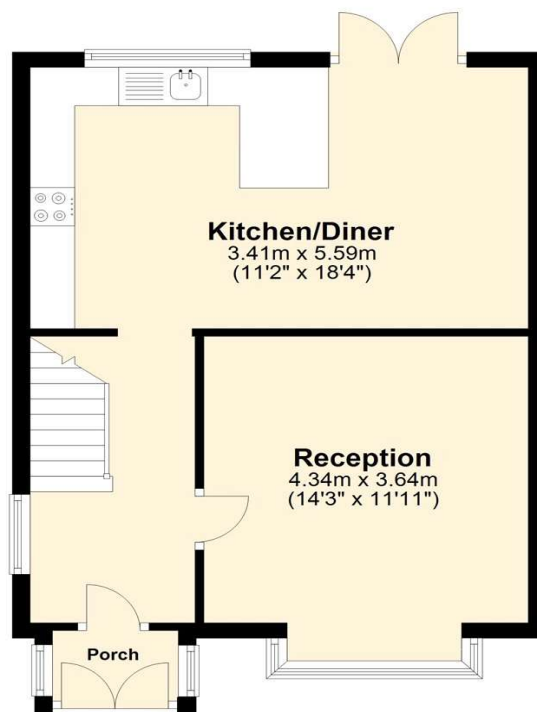
Bedroom 2 3.4mx3.12m (11'2"x10'3") Double glazed window to rear, coved ceiling, radiator, fitted carpet.

Bedroom 3 2.84mx2.51m (9'4"x8'3") Double glazed window to front, coved ceiling, radiator, fitted carpet.

Bathroom Two frosted double glazed window to rear, panel enclosed bath with mixer taps and shower attachment, mixer shower with riser rail over Bath, glass shower screen, low level WC, vanity mounted wash hand basin with mono tap, tiled walls, heated towel rail, tiled floor.

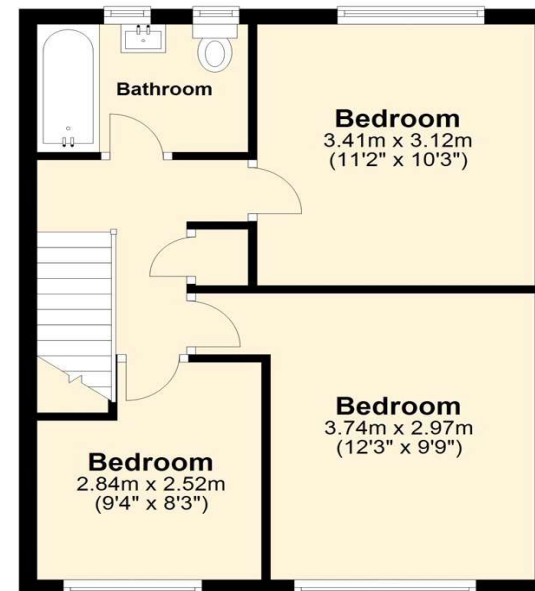
Ground Floor

Approx. 42.8 sq. metres (461.1 sq. feet)



First Floor

Approx. 40.5 sq. metres (436.2 sq. feet)

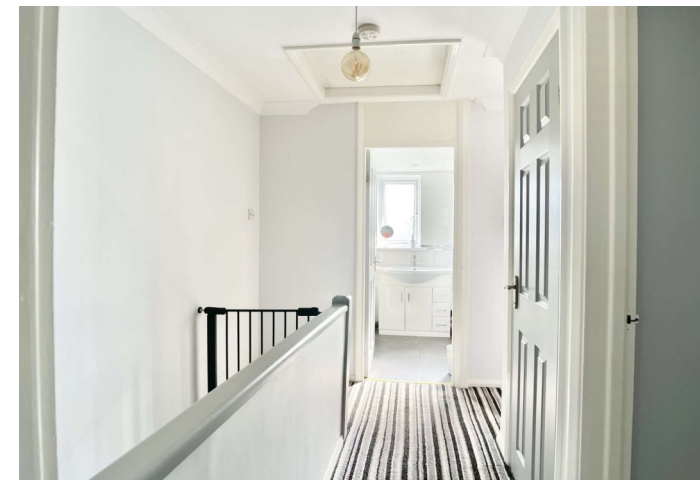


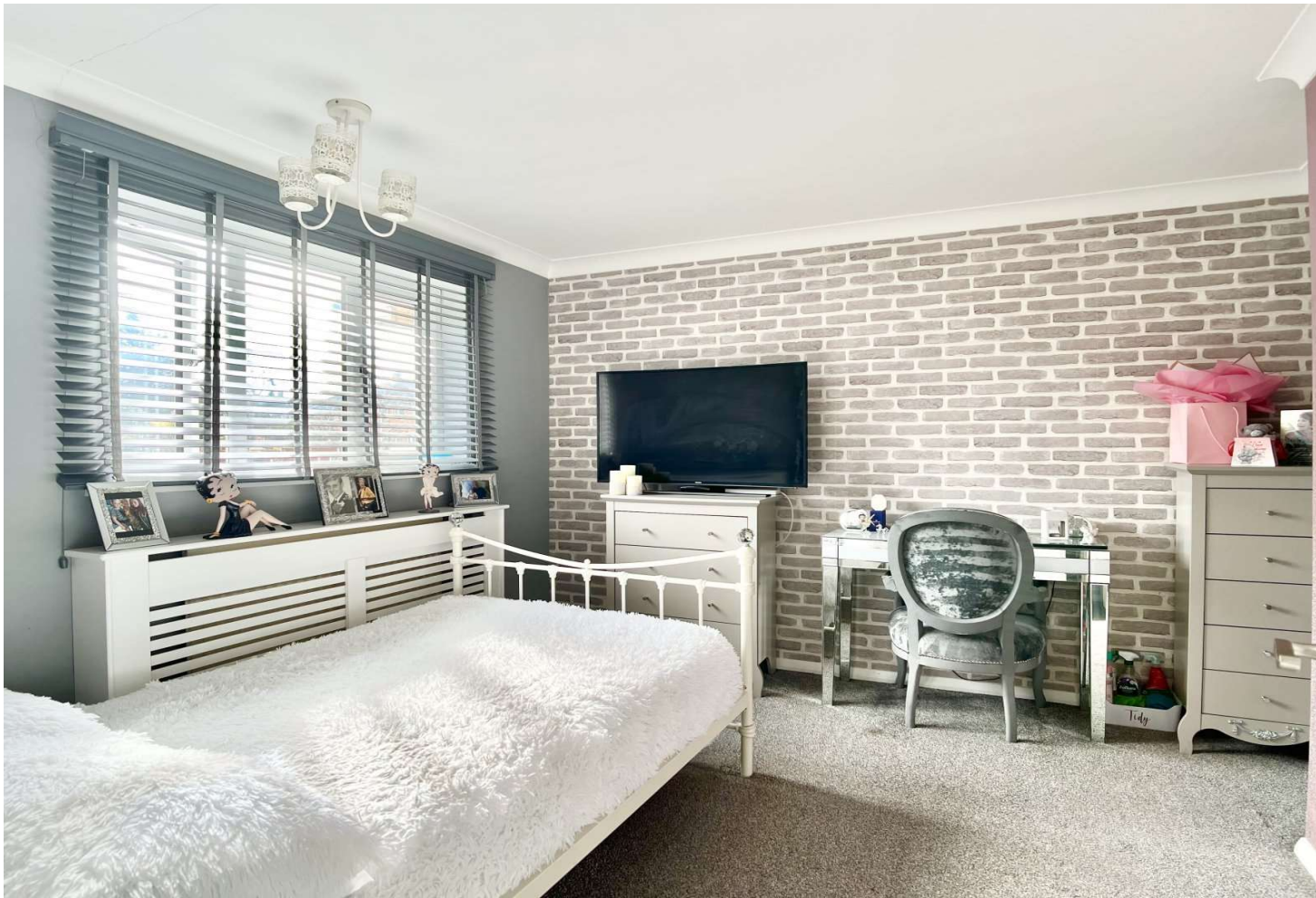
Total area: approx. 83.4 sq. metres (897.3 sq. feet)

Exterior

Front Garden: Mainly laid to lawn with central path leading to the front door.

Rear Garden: Paved patio area, mainly laid to lawn, rear access to parking, side pedestrian access, timber outhouse with power and lighting, outside tap.





Property Location

Kirby Road, Dartford, Kent, DA2 6HF



Exterior

Front Garden: Mainly laid to lawn with central path leading to the front door.

Rear Garden: Paved patio area, mainly laid to lawn, rear access to parking, side pedestrian access, timber outhouse with power and lighting. outside tap.

Additional Information

The property is being sold with no chain.

Electric meter is located in the hallway.

Gas meter is located in the kitchen cupboard.

Boiler located in the kitchen.

Air conditioning unit that services the lounge and kitchen diner.

**FOR MORE INFORMATION
CONTACT US TODAY.**

01322 281281

Robinson Jackson
22 Market Street,
Dartford,
Kent DA1 1EZ

dartford@robinson-jackson.com

