



Larkbere Road | London, SE26 4HB

3 1 1

Asking Price £500,000  
Leasehold

**ROBINSON-JACKSON**  
Our service will *move* you

## Larkbere Road, London

Wonderful terraced house offered chain free with three bedrooms, pleasant rear garden, double glazing, ample storage, entry phone, in need of TLC offering fantastic potential set within a popular location, excellently located for Sydenham Station, conveniently located for High Street and the award winning Mayow Park

### Property Features

- Council Tax: C
- EPC Rating: D
- Three Bedrooms
- Terraced House
- Chain Free
- Freehold
- Pleasant Rear Garden
- Double Glazing



## Interior

**Entrance Hall** Double glazed window, radiator

**Lounge** Double glazed window to front, under-stairs storage, radiator

**Kitchen** Single glazed windows to front and side, range of wall and base units, wood block work surface, stainless steel sink with drainer, space for oven and fridge freezer, plumbed for washing machine, wood flooring, radiator

**Master Bedroom** Double glazed window to front, built in wardrobes, wood flooring, radiator

**Bedroom Two** Single double glazed window to rear, built in wardrobes, carpet, radiator

**Bedroom Three** Single glazed window to rear, carpet, radiator

**Bathroom** Single glazed window to side, panelled bath, wash hand basin, low flush wc, tiled flooring, radiator, shaving/dryer power point

## Exterior

Pleasant rear garden mainly laid to lawn with shrubs

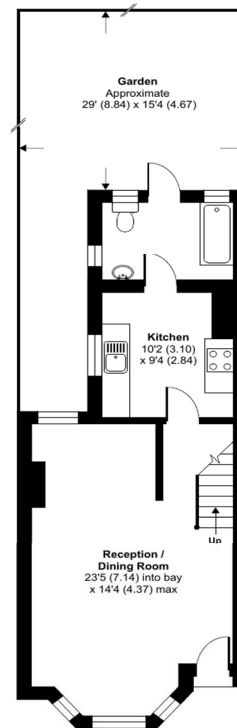
## To be advised Information

Time remaining on lease: Not Available

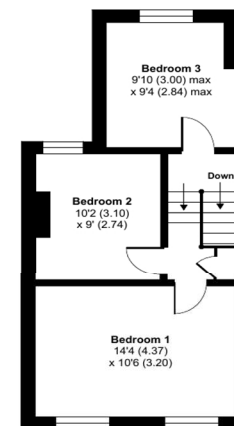
Ground Rent: Not Available

Service Charge: Not Available

Ground Rent Review Date:



GROUND FLOOR



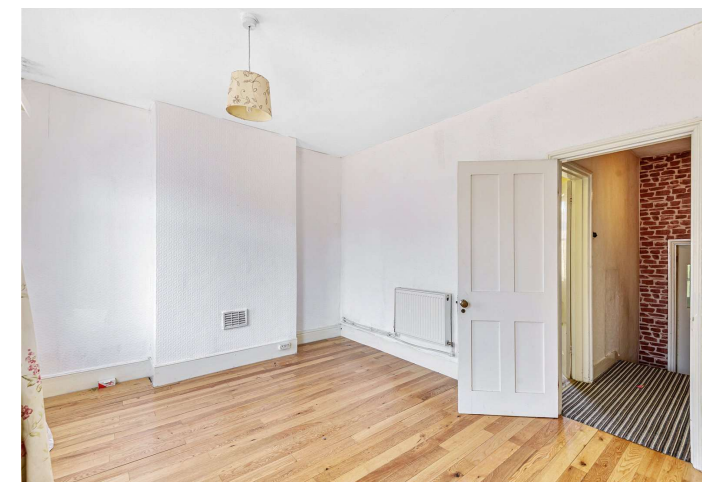
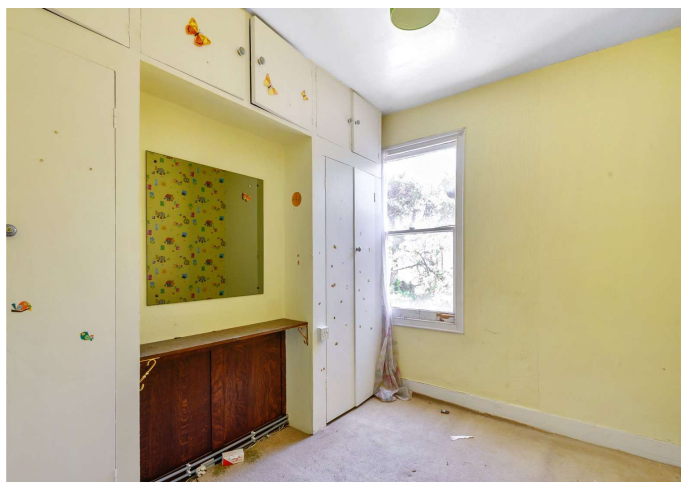
FIRST FLOOR

Approximate Area = 877 sq ft / 81.5 sq m

For identification only - Not to scale



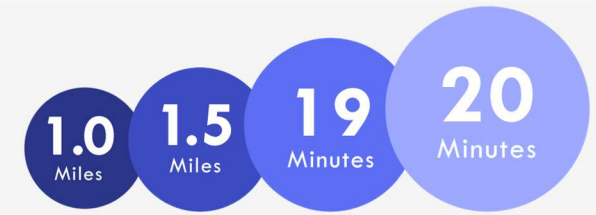
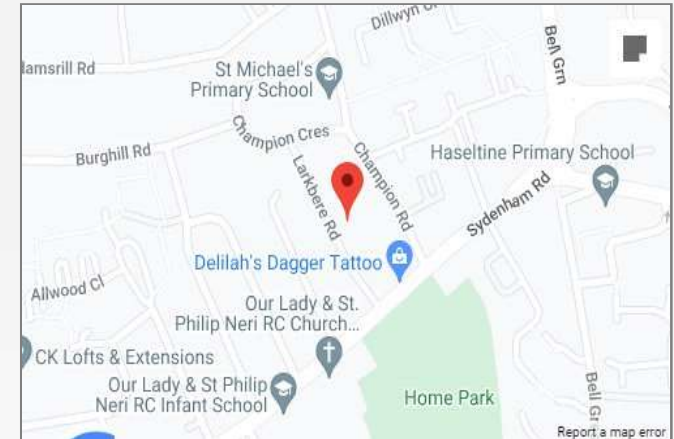
Floor plan produced in accordance with RICS Property Measurement Standards incorporating International Property Measurement Standards (IPMS2 Residential). © ncheccm 2022. Produced for Robinson Jackson.





## Property Location

Larkbere Road, London, SE26 4HB



Horniman Museum & Gardens    Crystal Palace    Canada Water Station    Train to London Bridge

\*All distances from branch postcode. Train time from nearest station.

## Additional Information

Double glazing

Central heating

Ample storage

Entry phone

Chain free

Freehold

In need of TLC

Fantastic potential

Excellently located for Sydenham Station

Conveniently located for High Street and the award winning Mayow Park

**FOR MORE INFORMATION  
CONTACT US TODAY.**

020 8776 6660

Robinson Jackson  
256 Kirkdale,  
Sydenham,  
London SE26 4NL

[sydenham@robinson-jackson.com](mailto:sydenham@robinson-jackson.com)



These particulars do not form part of an offer or contract and must not be relied upon as statements or representation of fact. Any areas, measurements, journey times or distances are approximate. The text, images, photographs and plans are for guidance only and are not necessarily comprehensive. It should not be assumed that the property has all necessary planning, building regulation or other consents and we have not tested any services, equipment or facilities. References to tenure are based on information supplied by the seller. Buyer should verify all information themselves by inspection or otherwise prior to a legal commitment to purchase. Photos and images are subject to copyright.