



Cumberland Place
Catford
SE6 1LY
Leasehold

One bedroom purpose built first floor flat located in the ever popular "Cumberland place" development. Benefitting from a 13' bedroom and 15' living room. Well located for public transport and hither green station making it a great first time buy/investment opportunity.

- One Bedroom Flat
- First Floor
- 162 Year Lease
- Close To Amenities
- Parking
- No Onward Chain

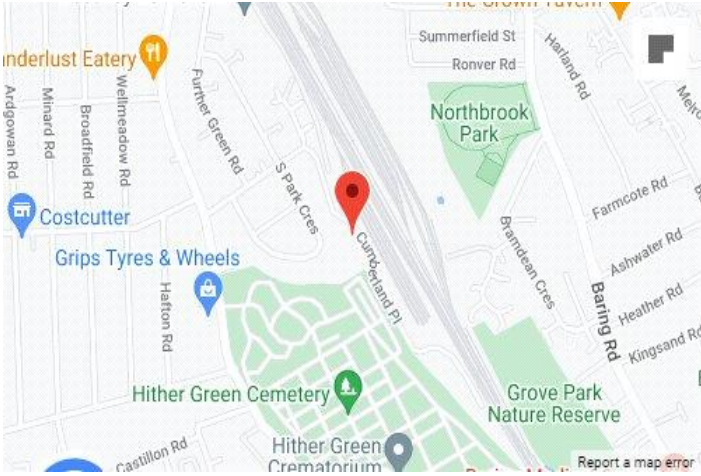
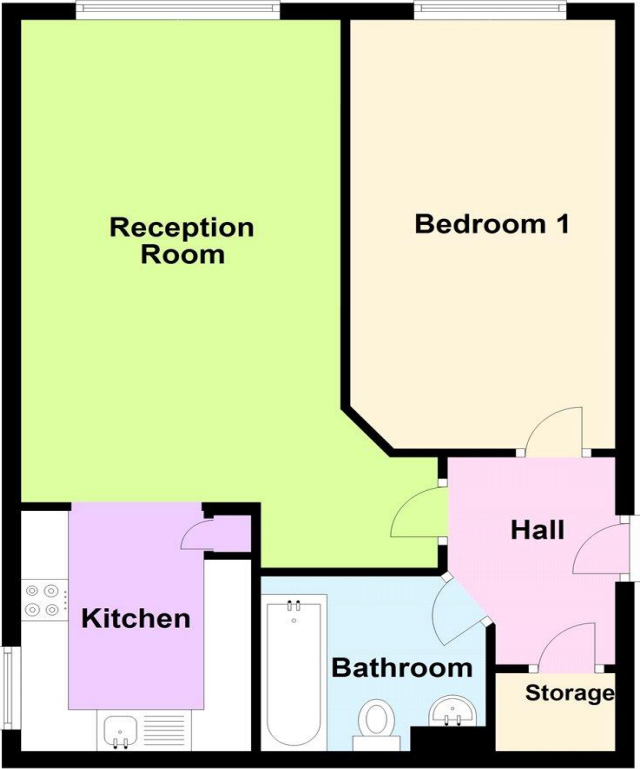
Guide Price £225,000 - £240,000



Council Tax: C
EPC Rating: TBC

ROBINSON-JACKSON
Our service will *move* you

First Floor



FOR MORE INFORMATION
CONTACT US TODAY.

020 8698 1234
Robinson Jackson
87 Rushey Green,
Catford,
London SE6 4AF
catford@robinson-jackson.com



Interior

Communal Door Stairs to first floor landing.

Entrance Hall Wooden front door, laminate floor, storage cupboard.

Reception Room 4.6m x 3.38m (15'1" x 11'1") Single glazed window to front, Dimplex electric heater, fitted carpet, opening into kitchen.

Kitchen 2.13m x 2.82m (7' x 9'3") Single glazed window to side, range of wall and base units with work surface over, single bowl sink unit, cooker, plumbing for washing machine, vinyl floor, tiled splashback, storage cupboard.

Bedroom 1 3.96m x 2.8m (13' x 9'2") Secondary glazed window to front, Dimplex electric heater, fitted carpet.

Bathroom Three piece suite comprising of panelled bath with mixer tap and shower over, pedestal wash hand basin with mixer tap, low level w.c., tiled floor, tiled walls.

Exterior

External Allocated parking.

Leasehold Information

Lease Term: 162 years*

Service Charge: £1806.67 per year*

Ground Rent: £0 per year*

(*to be verified by Vendors Solicitor)

Additional Information

Local Authority: London Borough of Lewisham

Council Tax: Band C (£1,615 pa)

Location

Catford is growing in popularity among commuters as journeys from its two mainline stations can take as little as 10 minutes to Central London.

The Broadway Theatre is an impressive Art Deco building, with a regular programme of shows and events. Catford's other premium attraction is Mountsfield Park – one of London's best open spaces and home of the annual People's Day. Catford's Black Cat sculpture remains a well-loved landmark.

These particulars do not form part of an offer or contract and must not be relied upon as statements or representation of fact. Any areas, measurements, journey times or distances are approximate. The text, images, photographs and plans are for guidance only and are not necessarily comprehensive. It should not be assumed that the property has all necessary planning, building regulation or other consents and we have not tested any services, equipment or facilities. References to tenure are based on information supplied by the seller. Buyer should verify all information themselves by inspection or otherwise prior to a legal commitment to purchase. Photos and images are subject to copyright.