



St. Peters Street
Maidstone
ME16 0GQ

Leasehold



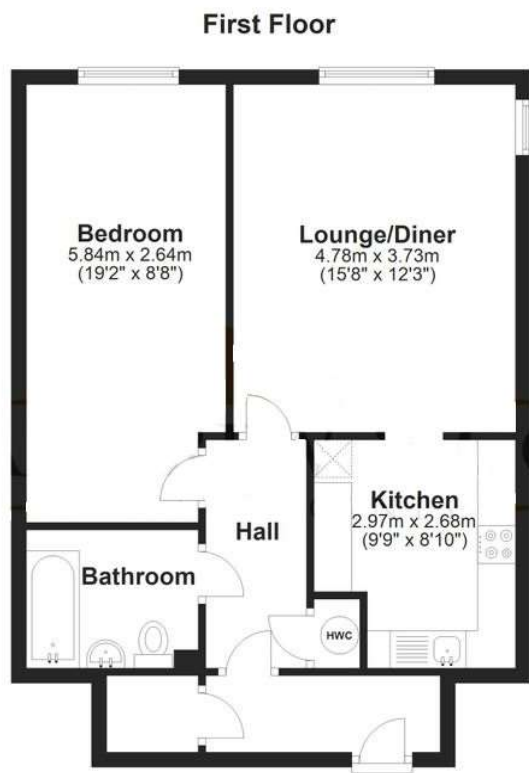
Council Tax: C
EPC Rating: B

Introducing to the market this first floor, double bedroom flat located within walking distance of Maidstone town centre and all three of Maidstone's train stations.

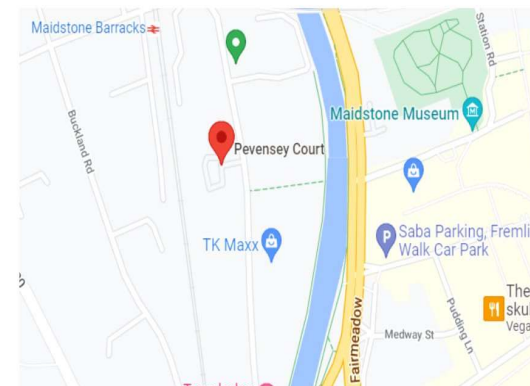
- External Locked storage room
- Communal gardens
- Low Service charge and ground rent
- Lift access
- Allocated underground parking

Offers in excess of £160,000

ROBINSON MICHAEL & JACKSON
Our service will *move* you



Plans are for layout purposes only and are not drawn to scale, with any doors, windows and other internal features merely intended as a guide.
Plan produced using PlanUp.



**FOR MORE INFORMATION
CONTACT US TODAY.**

01622 476666
Robinson Michael & Jackson
15A King Street
Maidstone,
Kent ME14 1BA
maidstone@robinson-jackson.com



Interior

Bedroom 5.84m x 2.64m (19'2" x 8'8")

Lounge/Diner 4.78m x 3.73m (15'8" x 12'3")

Kitchen 2.97m x 2.7m (9'9" x 8'10")

Leasehold Information

Time remaining on lease: Approx. 105 years and 10 months

Ground Rent: Not Available

Service Charge: £120 Per Annum Both charges combined - monthly