



Gilmore Road | London, SE13 5AB



3



2



2

Guide Price £650,000

Freehold

ROBINSON-JACKSON
Our service will *move* you

Gilmore Road, London

Spacious three bedroom three storey town house located close to excellent transport links from Lewisham DLR, two receptions, large garden and off street parking, NO ONWARD CHAIN.

Property Features

- Three Bedrooms
- Two Reception Rooms
- Two Bathrooms
- 45' Rear Garden
- Excellent Transport Links
- Total floor area: 98m²= 1,055ft² (guidance only)



Interior

Entrance Hall Stairs to first floor, door to lounge / dining room.

Lounge/Dining Room 6.43m x 3.3m (21'1" x 10'10") Double glazed window to front, radiators, fitted carpet, understair storage.

Kitchen 3.7m x 2.6m (12'2" x 8'6") Double glazed window to rear, radiator, range of wall and base units with work surface over, oven with four ring gas hob and extractor hood over, stainless steel sink unit with mixer taps, space for fridge freezer, space for washing machine, door to downstairs shower room, door leading to rear, tiled splashback, tiled floor.

Downstairs Shower Room Pedestal wash hand basin, shower cubicle, low level w.c., tiled floor.

First Floor Landing Carpet flooring, radiator, doors to all rooms.

Separate W.C. Low level w.c., laminate flooring.

Bedroom 1 3.3m x 2.8m (10'10" x 9'2") Double glazed window to rear, radiator, fitted carpet.

Bedroom 2 4.4m x 4.2m (14'5" x 13'9") Double glazed window to front, radiator, carpet.

Second Floor Landing Laminate floor, doors to all rooms.

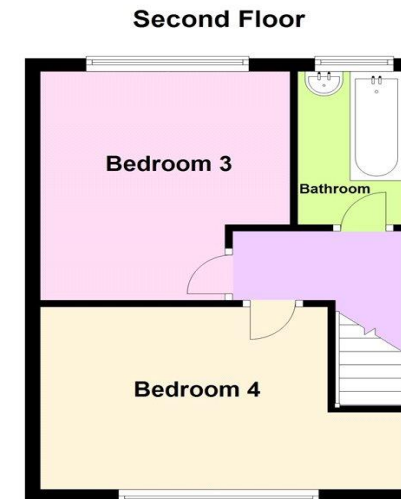
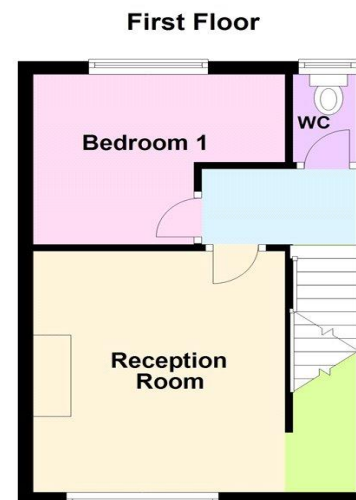
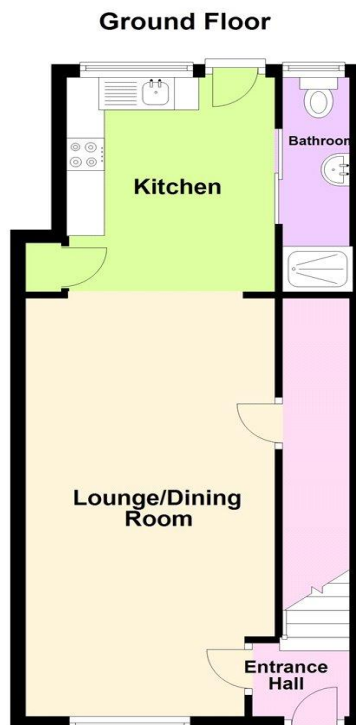
Bedroom 3 3.96m x 3m (13' x 9'10") Double glazed window to rear, radiator, laminate floor.

Bedroom 4 4.4m x 3.2m (14'5" x 10'6") Double glazed window to front, radiator, laminate floor.

Bathroom Double glazed window to rear, two piece suite comprising of panelled bath, pedestal wash hand basin, part tiled walls, tiled floor.

Exterior

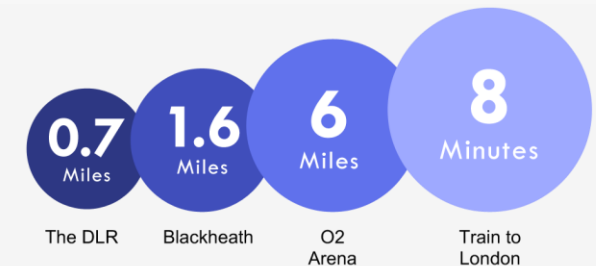
Garden 13.72m (45') Paved patio





Property Location

Gilmore Road, London, SE13 5AB



*All distances from branch postcode. Train time from nearest station.

Location

The property is located in ever popular Hither Green area famous for its Primary Schools and excellent transport links. Served by three main train lines the area is popular among the commuters as journeys to Central London can take as little as 10 minutes. Just a stone throw away is another premium attraction of the area – Mountsfield Park – one of London's best open spaces and home of the annual People's Day.

Other Information

Local Authority: London Borough of Lewisham/ Council Tax: Band D (£1,926.27) / EPC Rating: D

**FOR MORE INFORMATION
CONTACT US TODAY.**

020 8297 8777

Robinson Jackson

27 Lewis Grove,

Lewisham,

London, SE13 6BG

lewisham@robinson-jackson.com



These particulars do not form part of an offer or contract and must not be relied upon as statements or representation of fact. Any areas, measurements, journey times or distances are approximate. The text, images, photographs and plans are for guidance only and are not necessarily comprehensive. It should not be assumed that the property has all necessary planning, building regulation or other consents and we have not tested any services, equipment or facilities. References to tenure are based on information supplied by the seller. Buyer should verify all information themselves by inspection or otherwise prior to a legal commitment to purchase. Photos and images are subject to copyright.