



Rosebank | Anerley Park, Penge, SE20 8NL

 2  1  1 Offers in excess of £425,000 To be advised

ROBINSON-JACKSON
Our service will **move** you

Rosebank, Anerley Park

Fantastic totally refurbished two double Bedroom Ground Floor Maisonette.

Situated within easy reach of Penge West Station and just a short walk to Penge East Station.

In close proximity to the local High Street.

Property Features

- Council Tax: C
- EPC Rating: C
- Two Double Bedrooms
- Modern Purpose-Built Maisonette
- Chain Free
- Leasehold
- Long Lease
- Ground Floor



Interior

Entrance Hall Built in cupboard, vinyl flooring, radiator

Lounge Double glazed windows to front and rear, carpet and vinyl flooring, radiator

German Rotpunkt Kitchen Double glazed windows to rear, range of gloss wall and base units, granite work surface, stainless steel sink with drainer, integrated stainless-steel oven and hob, built in Hotpoint fridge freezer and washing machine, integrated Bosch dishwasher, vinyl flooring, radiator

Master Bedroom Double glazed windows to rear, carpet, radiator

Bedroom Two Double glazed windows to front, carpet, radiator

Bathroom Double glazed windows to front and rear, panelled bath, shower screen, wash hand basin, low flush wc, tiled flooring, heated towel rail, extractor fan

Exterior

Pleasant private garden mainly laid to lawn with shrubs

Leasehold Information

Time remaining on lease: TBC

Ground Rent: TBC

Service Charge: TBC

Additional Information

Double glazing

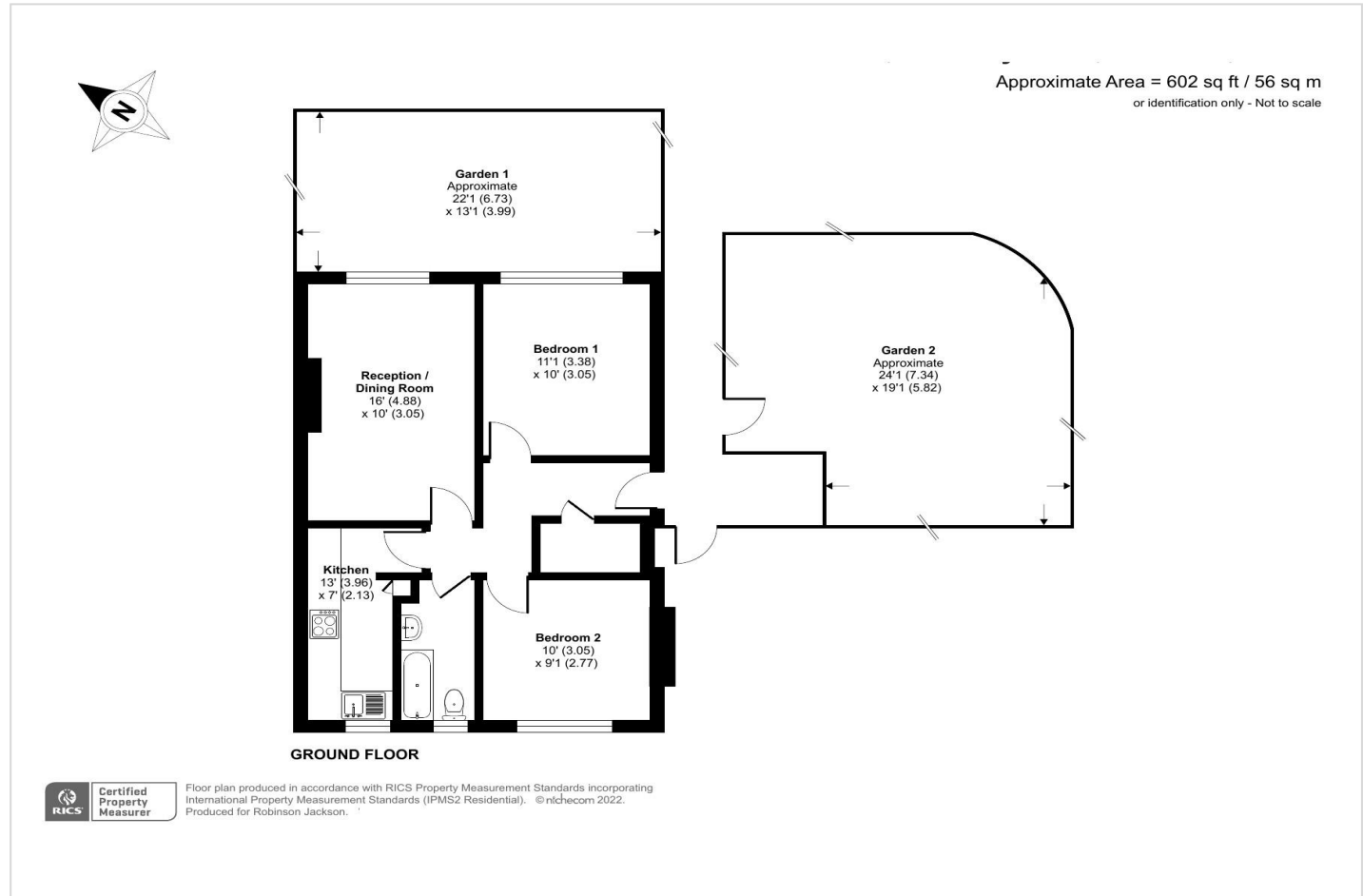
Central heating

Integrated top of the range appliances (2020)

Worcester Bosch boiler (2020)

Complete rewiring of property (2020)

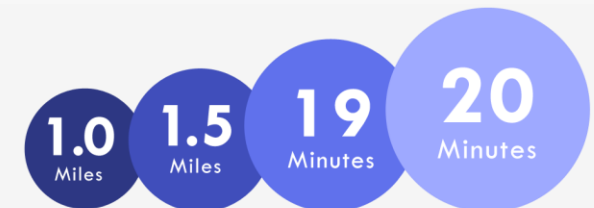
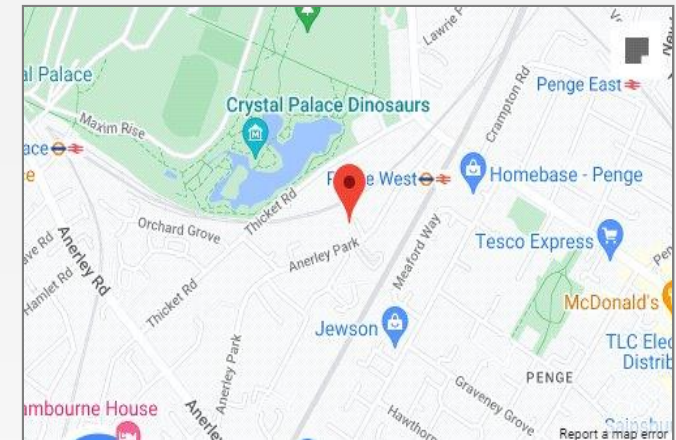
Contemporary designed





Property Location

Rosebank, Anerley Park, Penge, SE20 8NL



*All distances from branch postcode. Train time from nearest station.

**FOR MORE INFORMATION
CONTACT US TODAY.**

020 8776 6660
Robinson Jackson
256 Kirkdale,
Sydenham,
London SE26 4NL
sydenham@robinson-jackson.com



These particulars do not form part of an offer or contract and must not be relied upon as statements or representation of fact. Any areas, measurements, journey times or distances are approximate. The text, images, photographs and plans are for guidance only and are not necessarily comprehensive. It should not be assumed that the property has all necessary planning, building regulation or other consents and we have not tested any services, equipment or facilities. References to tenure are based on information supplied by the seller. Buyer should verify all information themselves by inspection or otherwise prior to a legal commitment to purchase. Photos and images are subject to copyright.