



Upper Grove Road | Belvedere, DA17 5NU



3



1



1

Price on application

Freehold

**ROBINSON-JACKSON**  
Our service will *move* you



# Upper Grove Road, Belvedere

Call today to view this three bedroom family home situated in a sought after road in Upper Belvedere, within walking distance to Nuxley Village and Bedonwell Pimary School.

## Property Features

- Three bedrooms
- Ground floor WC
- Lounge
- Kitchen
- Bathroom
- Double glazed
- Potential off street parking
- No onward chain





## Interior

**Hall:** UPVC door to front, radiator, wood parquet flooring, cupboard housing for conventional Valiant boiler

**Lounge:** 5.38m x 4.93m (17'8" x 16'2") Double glazed patio door to rear, double glazed door to rear, solid wood parquet floor, radiator, understairs cupboard

**Kitchen:** 3.17m x 2.4m (10'5" x 7'10") Double glazed window to front, tiled floor and walls, wall and base units with work surface over, stainless steel sink with mixer tap, integrated oven and four ring electric hob, integrated extractor fan, space for fridge freezer, washing machine and dish washer

**Ground floor WC:** Double glazed frosted window to front, tiled floor, low level WC, wash hand basin, part tiled walls

**Landing:** Carpet, cupboard housing water cylinder, storage cupboard

**Bedroom one:** 4.10m x 2.95m (13'5" x 9'8") Double glazed window to front, radiator and carpet

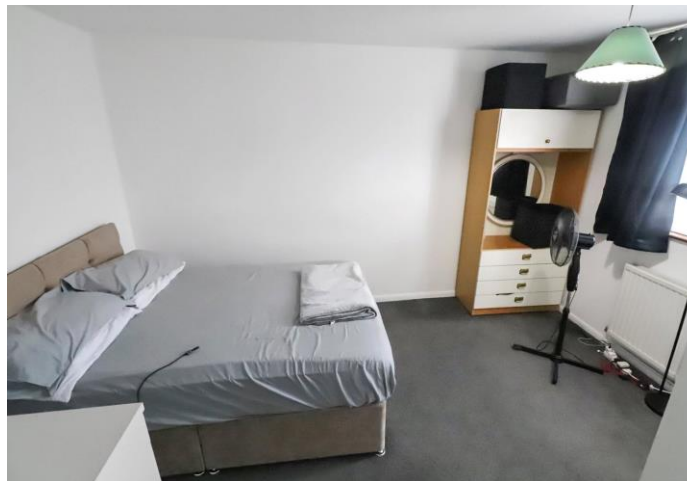
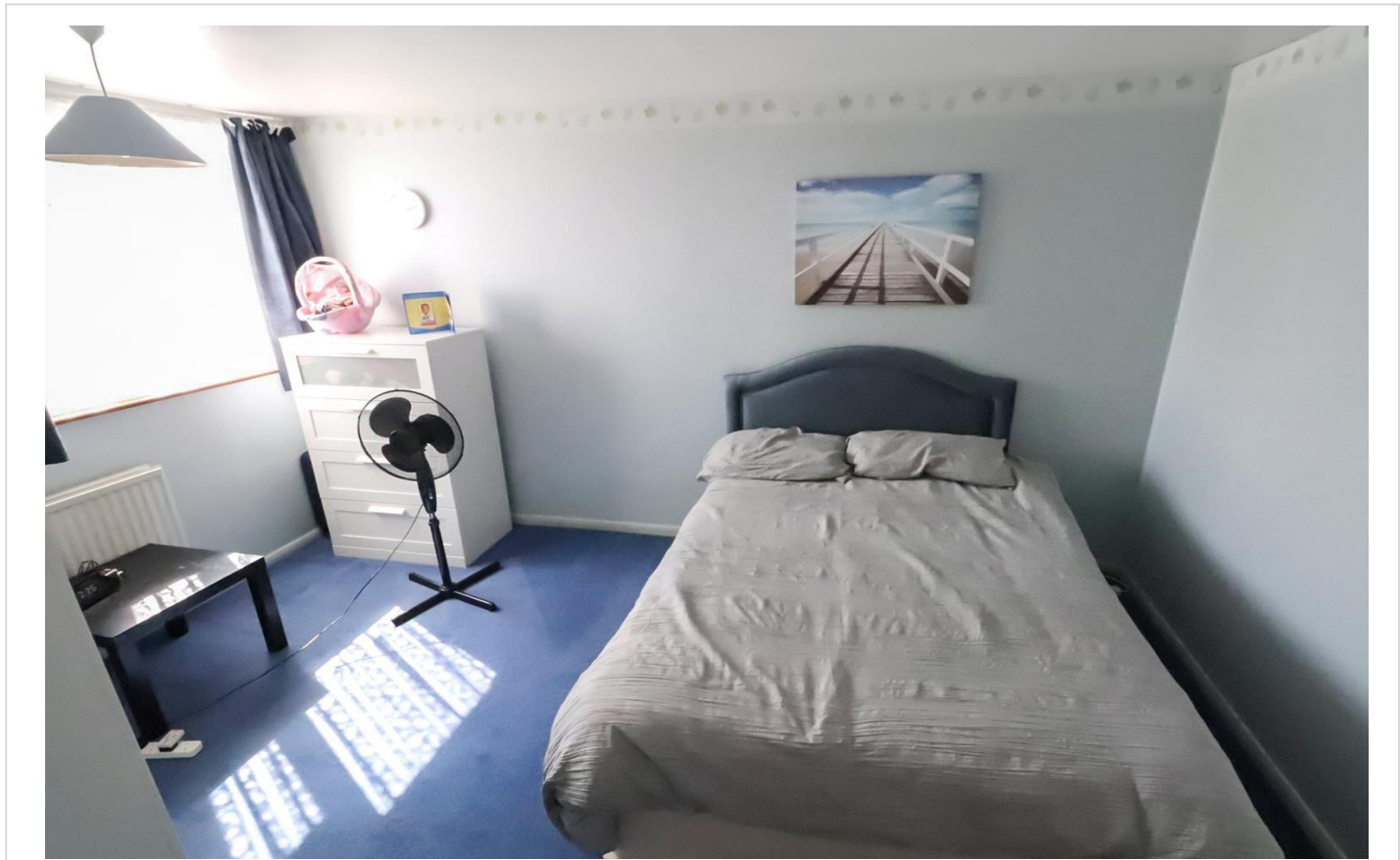
**Bedroom Two:** 4.26m x 2.97m (14' x 9'9") Double glazed window to rear, radiator and carpet

**Bedroom Three:** 2.47m x 2.33m (8'1" x 7'8") Double glazed window to rear, radiator and wood laminate flooring

**Bathroom:** Double glazed frosted window to front, radiator, tiled floor and walls, panelled bath with mixer tap and shower attachment, low level WC and pedestal wash hand basin

## Exterior

**Rear Garden:** Paved patio, access to rear, planted borders, shed, grass laid to lawn, outside power supply

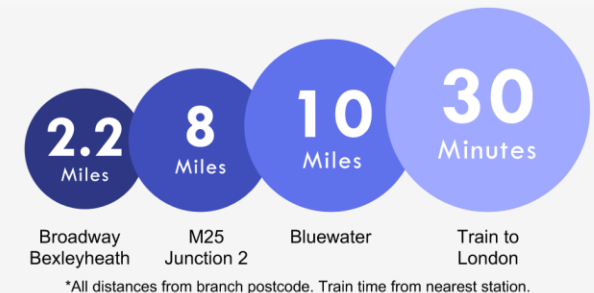






## Property Location

Upper Grove Road, Belvedere, DA17 5NU



## Additional Information

At the heart of Belvedere is Nuxley Village – where you'll find shops, pubs, restaurants and the Robinson Jackson branch. Explore a little further and you'll find Lesnes Abbey, with its historic monastic ruins and formal gardens, and Bostall Woods with its protected bluebell fields and ancient trees.

Belvedere residents will be a manageable walk or one stop on the train line away from Abbey Wood's Crossrail station, with the service opening in 2018.

- Council Tax: C
- EPC Rating: C

**FOR MORE INFORMATION  
CONTACT US TODAY.**

01322 441010  
Robinson Jackson  
61 Nuxley Road,  
Belvedere,  
Kent DA17 5JN  
belvedere@robinson-jackson.com

