



Bowditch
London
SE8 3AP
Leasehold

Spacious three bedroom split level flat located on the 4th floor of a purpose built block close to excellent transport links. Sold with no chain.

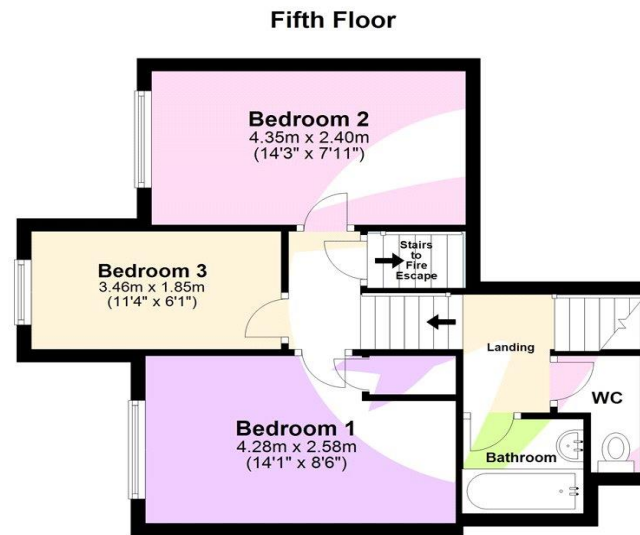
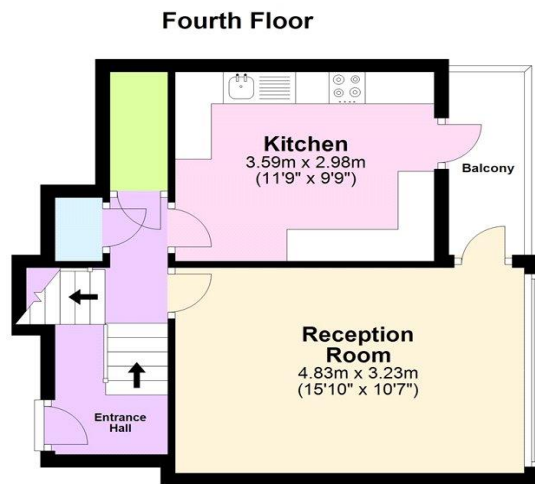
The property is tenanted, and the rental income being achieved is £1,400 pcm.



Council Tax: B
EPC Rating: D

Asking Price £275,000

ROBINSON-JACKSON
Our service will *move* you



**FOR MORE INFORMATION
CONTACT US TODAY.**

020 8297 8777

Robinson Jackson
27 Lewis Grove,
Lewisham,
London, SE13 6BG

lewisham@robinson-jackson.com



Location

Tucked between touristy Greenwich and Bermondsey, Deptford has an atmosphere all of its own. A strong sense of maritime history combines with charming period properties and new builds to create the quintessential London living experience.

From fantastic restaurants that provide eclectic options to independent high street shops that are thriving, living in Deptford provides its own unique sense of community.

This well-connected postcode provides a little slice of South East London while offering direct services in and out of the capital.

Leasehold Information

Time remaining on lease: Approx. 93 years*

Service Charge: TBC*

Ground Rent: TBC*

(*to be verified by Vendors Solicitor)

Other Information

Local Authority: London Borough of Lewisham

Council Tax: Band B (£1,498.20 pa)

EPC Rating: D

Property Features

- Three bedroom flat
- Split level
- Balcony
- Ample storage
- Chain free
- Close to local amenities and transport links
- Total floor area: 76m² = 818ft² (guidance only)