



Oxford Road

Maidstone | ME15 8DA







# Oxford Road

Maidstone, ME15 8DA

Offers Over £425,000  
Freehold

Robinson Michael & Jackson are delighted to present this three-bedroom semi-detached home, benefitting from a large double garage, driveway for ample vehicles and a WEST facing garden!

## Benefitting from:

- Corner plot
- Large double garage with power and electric
- Close to local schools
- Three bedrooms
- Semi detached
- West facing garden
- Council Tax: C
- EPC Rating: C



## Accommodation

**Living Room** 4.7m x 4.1m (15'5" x 13'5")

**Kitchen/Diner** 3.05m x 6.1m (10' x 20')

**Double Garage** 5.44m x 7.32m (17'10" x 24')

**Bedroom 1** 4.47m x 3.05m (14'8" x 10')

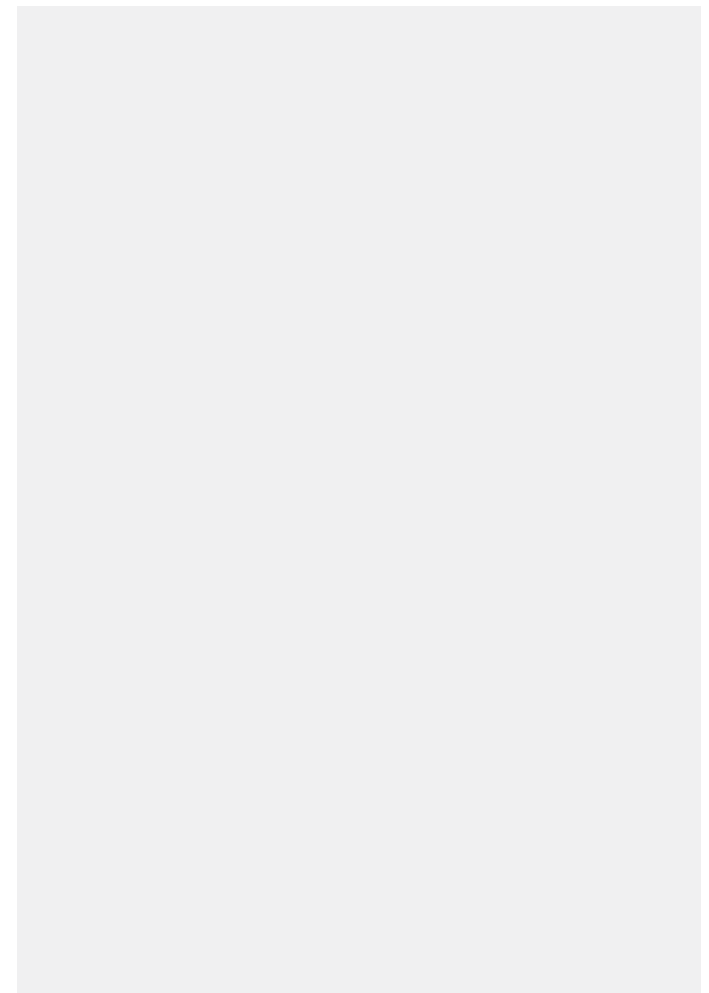
**Bedroom 2** 3.05m x 3.28m (10' x 10'9")

**Bedroom 3** 3.38m x 2.64m (11'1" x 8'8")

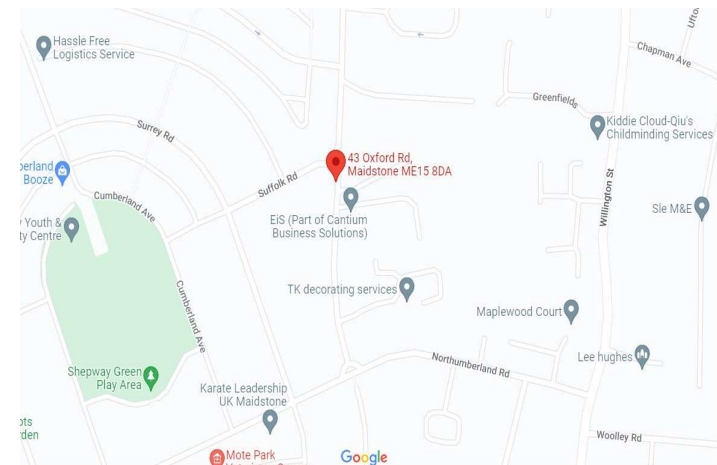
**Bathroom** 1.65m x 2.16m (5'5" x 7'1")











## Important Notice

These particulars do not form part of an offer or contract and must not be relied upon as statements or representation of fact. Any areas, measurements, journey times or distances are approximate. The text, images, photographs and plans are for guidance only and are not necessarily comprehensive. It should not be assumed that the property has all necessary planning, building regulation or other consents and we have not tested any services, equipment or facilities. References to tenure are based on information supplied by the seller. Buyer should verify all information themselves by inspection or otherwise prior to a legal commitment to purchase. Photos and images are subject to copyright.

## Location



(All distances & times are approximates)

## FOR MORE INFORMATION CONTACT US TODAY.

Tj Yardley - Branch Manager

01622 476666

Robinson Michael & Jackson

15A King Street

Maidstone,

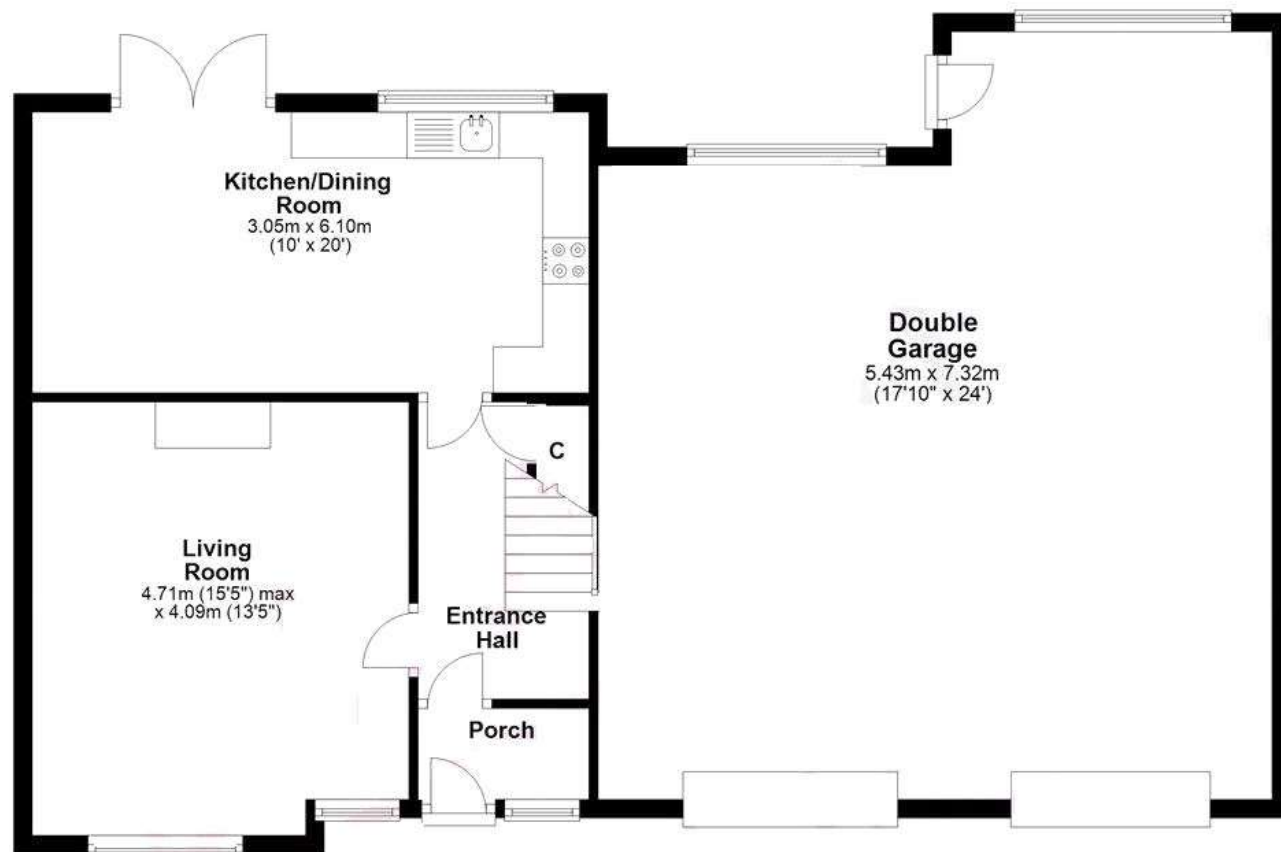
Kent ME14 1BA

[maidstone@robinson-jackson.com](mailto:maidstone@robinson-jackson.com)

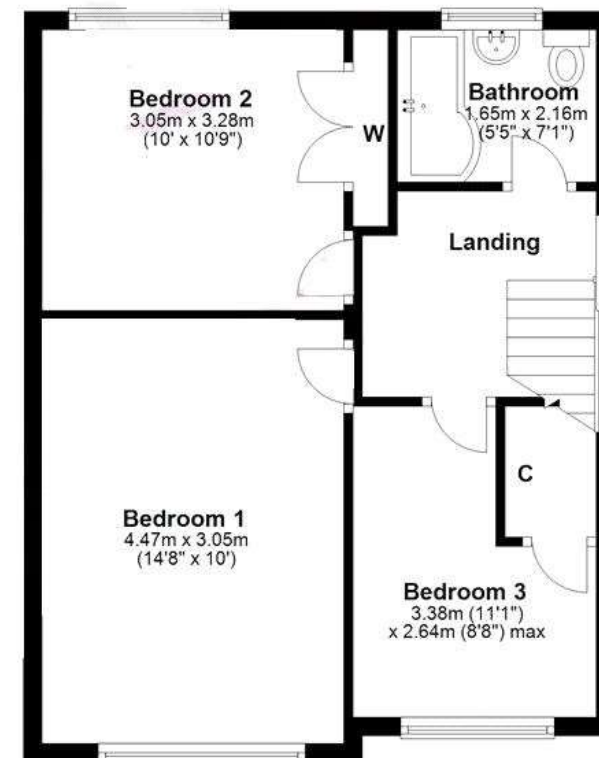
SALES | MORTGAGES | LEGALS

**ROBINSON MICHAEL & JACKSON**

## Ground Floor



## First Floor



Total area: approx. 140.2 sq. metres (1509.2 sq. feet)

Whilst every effort has been made to ensure the accuracy of this floor plan, measurements of doors windows, rooms and any other items contained are approximate and no responsibility is taken for any error, omission or mis-statement. This plan is for illustrative purposes only and should be used as such by any prospective purchaser.  
Plan produced using PlanUp.



