



Elmers End Road | London, SE20 7SL



Asking Price £235,000 Leasehold

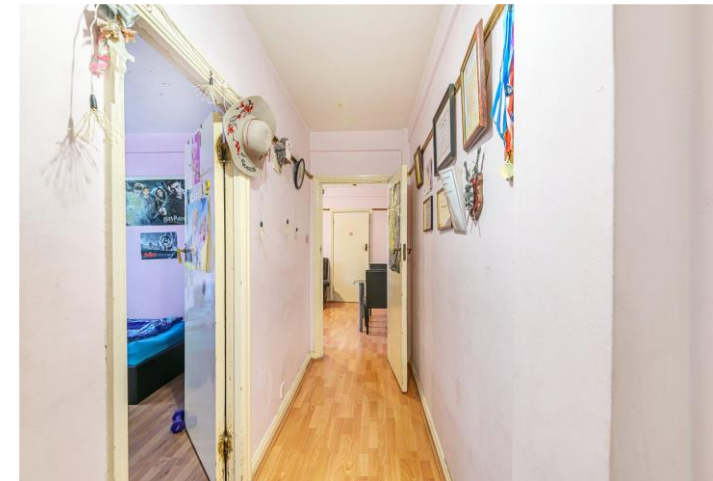
ROBINSON-JACKSON
Our service will *move* you

Elmers End Road, London

Third floor modern purpose built flat with two double bedrooms, leasehold, laminate flooring, entry phone, in need of TLC offering fantastic potential set within a popular location, ideal for Anerley Station, conveniently located for local independent shops, eateries and bars, Crystal Palace Park and Betts Park

Property Features

- Council Tax: B
- EPC Rating: C
- Two Double Bedrooms
- Modern Purpose Built Flat
- Leasehold
- Third Floor
- Laminate Flooring Where Stated
- Entry Phone
- In Need of TLC
- Fantastic Potential
- Ideal for Anerley Station
- Conveniently located for local independent shops, eateries and bars, Crystal Palace Park and Betts Park



Interior

Communal Entrance

Entrance Hall Built in cupboard, laminate flooring

Lounge Single glazed windows to rear, laminate flooring, radiator

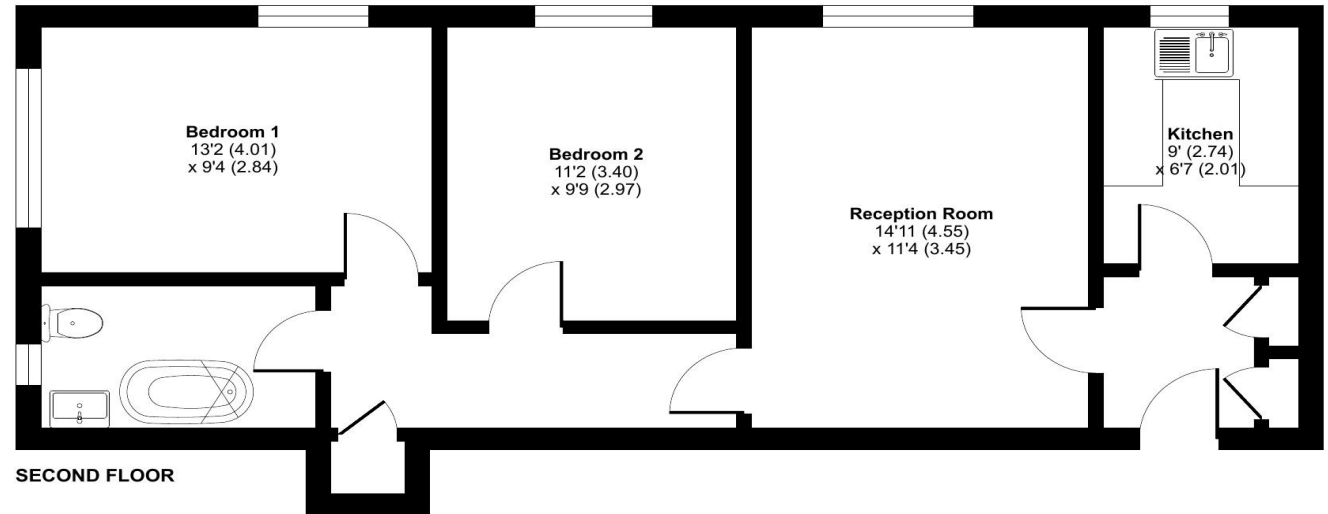
Kitchen Single glazed windows to rear, laminate flooring, stainless steel and drainer, oven, space for fridge freezer, plumbed for washing machine, laminate flooring

Master Bedroom Single glazed windows to side and rear, laminate flooring, radiator

Bedroom Two Single glazed windows to rear, laminate flooring, radiator

Bathroom Single glazed window to rear, panelled bath, built in electric shower, wash hand basin, low flush wc, vinyl flooring, heated towel rail

Approximate Area = 652 sq ft / 60.6 sq m
For identification only - Not to scale



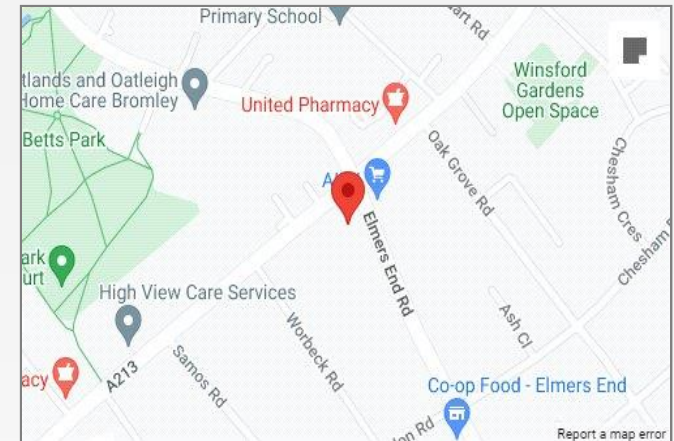
Floor plan produced in accordance with RICS Property Measurement Standards incorporating International Property Measurement Standards (IPMS2 Residential). © nchecon 2022. Produced for Robinson Jackson.





Property Location

Elmers End Road, London, SE20 7SL



**FOR MORE INFORMATION
CONTACT US TODAY.**

020 8776 6660
Robinson Jackson
256 Kirkdale,
Sydenham,
London SE26 4NL
sydenham@robinson-jackson.com

