



Knockhall Road | Greenhithe, Kent, DA9 9HF



3



1



2

Guide Price £350,000 to £375,000

Freehold

ROBINSON-JACKSON
Our service will **move** you

Knockhall Road, Greenhithe

Robinson Jackson are delighted to present this stunning three-bedroom bay fronted Victorian home situated in Greenhithe. The property features a brand new fitted kitchen and bathroom...

Property Features

- Council Tax: C
- EPC Rating: D
- Chain free
- Bay fronted with Victorian features
- Approx 52 ft rear garden
- Living room plus separate dining room
- Newly fitted kitchen
- Newly fitted bathroom
- New carpets and flooring throughout
- A short walk to Knockhall Primary School
- Bluewater, A2, local amenities all within easy reach



Interior

Entrance Hall Laminate flooring. Carpet. Stairs to first floor.

Lounge 4.01m x 3.48m (13'2" x 11'5") Double glazed bay window to front. Radiator. Carpet.

Dining Room 3.58m x 3.58m (11'9" x 11'9") Double glazed window to rear. Storage cupboard under stairs. Radiator. Laminate flooring.

Kitchen 4.34m x 2.84m (14'3" x 9'4") Double glazed window to rear and side. Range of matching wall and base units with complimentary work surfaces over. Integrated electric oven, gas hob and extractor. Cupboard housing boiler. Integrated dishwasher. Plumbed for washing machine. Laminate flooring.

Landing Cupboard with shelving. Loft access. Carpet.

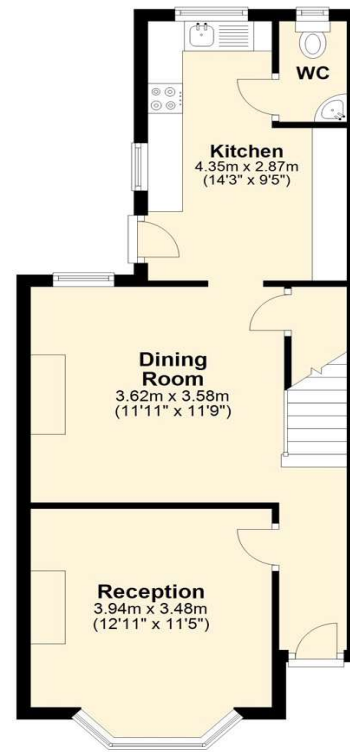
Bedroom 1 4.65m x 3.28m (15'3" x 10'9") Two double glazed windows to front. Radiator. Carpet.

Bedroom 2 3.58m x 2.84m (11'9" x 9'4") Double glazed window to rear. Radiator. Carpet.

Bedroom 3 2.67m (8'9") x 2.95m (9'8") narrowing to 1.96 (6'5")m Double glazed window to rear. Radiator. Carpet.

Bathroom 2.24m x 2m (7'4" x 6'7") Double glazed frosted window to side. Low level WC. Panelled bath with wall mounted shower, shower screen and mixer taps. Heated towel radiator. Part tiled walls. Tiled flooring.

Ground Floor
Approx. 44.2 sq. metres (475.7 sq. feet)



First Floor
Approx. 44.9 sq. metres (483.6 sq. feet)



Total area: approx. 89.1 sq. metres (959.3 sq. feet)





Additional Information

Dartford Borough Council - Tax Band C

The boiler is located in the Kitchen.

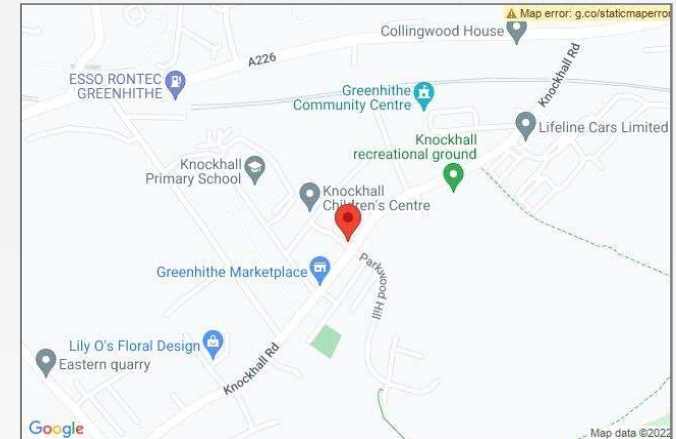
Total floor area: 90 sq. metres

Exterior

Rear Garden: Approx 52ft. Mainly laid to lawn. Paved patio area. Outside electric point.

Property Location

Knockhall Road, Greenhithe, Kent, DA9 9HF



**FOR MORE INFORMATION
CONTACT US TODAY.**

01322 624440

Robinson Jackson
39 High Street,
Swanscombe
Kent,
DA10 0AG

swanscombe@robinson-jackson.com

