



East Crescent Road | Gravesend, Kent, DA12 2AR



3



1



1

Asking Price £340,000 Freehold

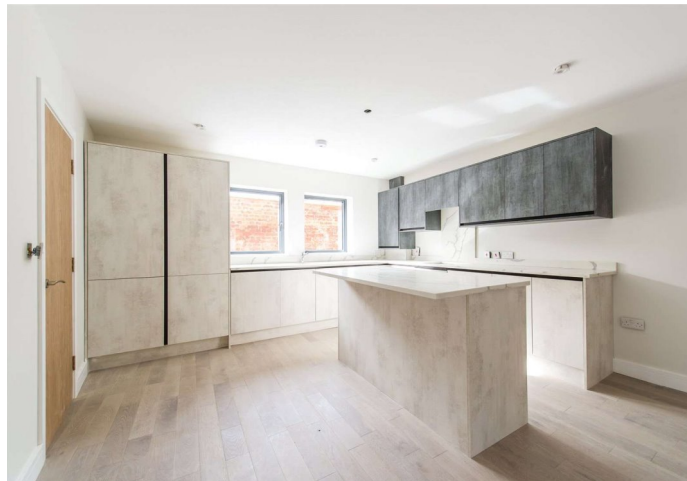
ROBINSON MICHAEL & JACKSON
Our service will *move* you

East Crescent Road, Gravesend

Located in the heart of Gravesend is this immaculately presented, brand new three-bedroom terraced residence within walking distance to Gravesend Mainline Train Station. Sold with No Chain!

Property Features

- Council Tax: To be confirmed
- EPC Rating: To be confirmed
- Brand New Build
- Walking Distance to Gravesend Train Station
- Three Bedrooms
- Ground Floor Cloakroom
- Open Plan Living
- Private Rear Garden
- No Forward Chain



Interior

Entrance Hall: 2.2m x 1.93m (7'3" x 6'4") Double glazed entrance door into hallway. Laminate flooring. Radiator. Doors to: -

GF Cloakroom: 1.9m x 1.47m (6'3" x 4'10") Low level w.c. Vanity wash hand basin with storage under. Tiled flooring. Tiled walls. Radiator.

Lounge, Kitchen Diner: 7.72m x 5.82m (25'4" x 19'1") Two double glazed windows to front. Double glazed bi-folding doors to rear. Wall and base units with work surface over. Sink and drainer unit with mixer tap and tiled splash back. Integrated oven and hob with extractor fan over. Integrated fridge freezer, dishwasher and washing machine. Built-in cupboard housing boiler. Spotlights. Laminate flooring. Two radiators.

First Floor Landing: 2.7m x 2.46m (8'10" x 8'1") Carpet. Doors to: -

Bedroom 1: 3.66m x 3.33m (12' x 10'11") Two double glazed windows to front. Radiator. Carpet. Spotlights.

Bedroom 2: 3.96m x 3.33m (13' x 10'11") Two double glazed windows to rear. Radiator. Carpet. Spotlights.

Bedroom 3: 3.94m x 2.44m (12'11" x 8') Double glazed window to rear. Radiator. Carpet. Spotlights.

Bathroom: 2.9m x 2.1m (9'6" x 6'11") Double glazed frosted window to front. Suite comprising panelled bath. Vanity wash hand basin. Low level w.c. Partly tiled walls. Tiled flooring. Heated towel rail.

Exterior

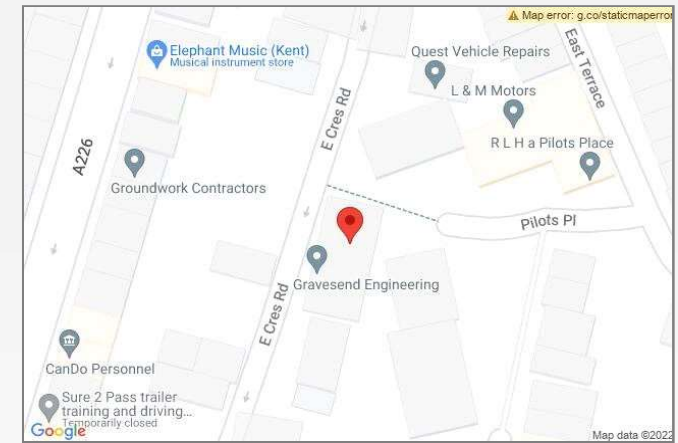
Rear Garden: Approx. 30ft: Patio area. Brick surround.





Property Location

East Crescent Road, Gravesend, Kent, DA12 2AR



**FOR MORE INFORMATION
CONTACT US TODAY.**

01474 333111
Robinson Michael & Jackson
21 King Street,
Gravesend,
Kent DA12 2EB
gravesend@robinson-jackson.com



These particulars do not form part of an offer or contract and must not be relied upon as statements or representation of fact. Any areas, measurements, journey times or distances are approximate. The text, images, photographs and plans are for guidance only and are not necessarily comprehensive. It should not be assumed that the property has all necessary planning, building regulation or other consents and we have not tested any services, equipment or facilities. References to tenure are based on information supplied by the seller. Buyer should verify all information themselves by inspection or otherwise prior to a legal commitment to purchase. Photos and images are subject to copyright.