



Grosvenor Road | Belvedere, DA17 5JY



3



1



2

Guide Price £375k to £400k

Freehold

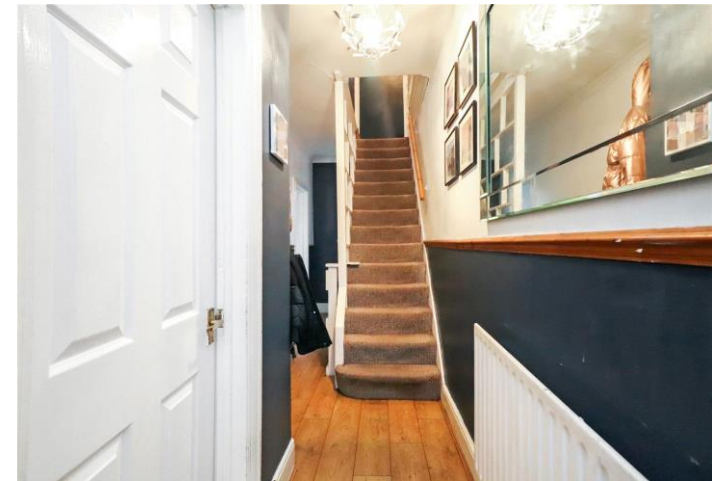
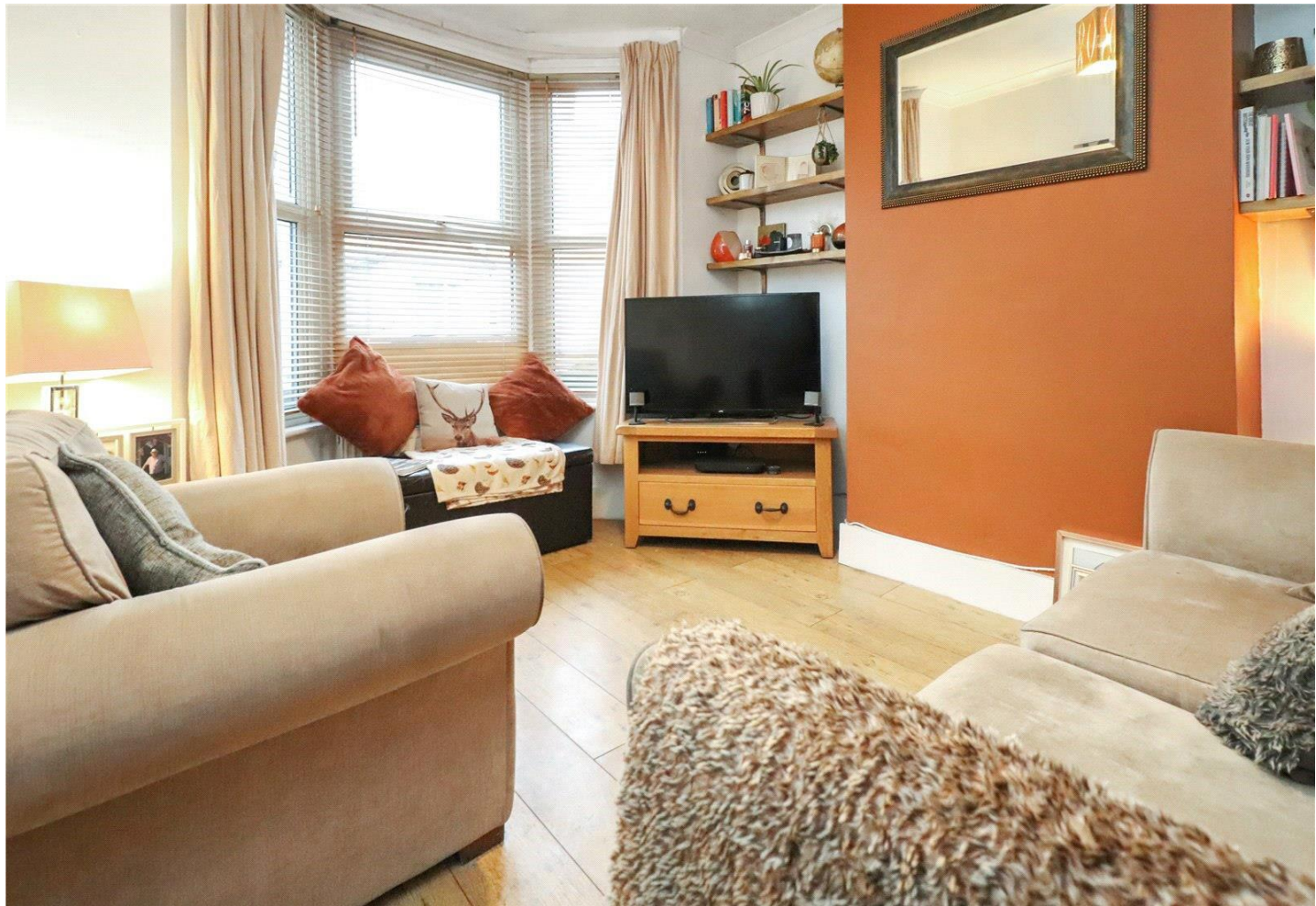
ROBINSON-JACKSON
Our service will *move* you

Grosvenor Road, Belvedere

Call today to view this larger than average Victorian terraced house situated in the heart of Nuxley Village where you will find all of your local amenities and local schools.

Property Features

- Three bedrooms
- Three storeys
- Cellar
- Large garden to rear
- Nuxley Village location
- Viewing advised



Interior

Entrance Hall Composite door to front, radiator, wood laminate flooring

Lounge (ground floor) 3.7m x 3.18m (12'2" x 10'5") Double glazed bay window to front, radiator, wood laminate flooring

Dining Room (lower ground floor) 3.89m x 3.56m (12'9" x 11'8") Double glazed window to rear, radiator, wood laminate flooring

Cellar (lower ground floor) 4.14m x 3.56m (13'7" x 11'8") Off dining room, carpet, power

Kitchen (lower ground floor) 2.97m x 2.7m (9'9" x 8'10") Double glazed french doors to rear, double glazed window to side, wall and base units, stainless steel sink unit with mixer tap, space for washing machine, space for fridge/freezer, built in oven and four ring gas hob, extractor, wall mounted combi boiler, part tiled walls, wood laminate flooring

Landing Double glazed window to rear, carpet, access to loft

Bedroom 1 (first floor) 4.67m x 2.95m (15'4" x 9'8") Two double glazed windows to front, radiator, carpet

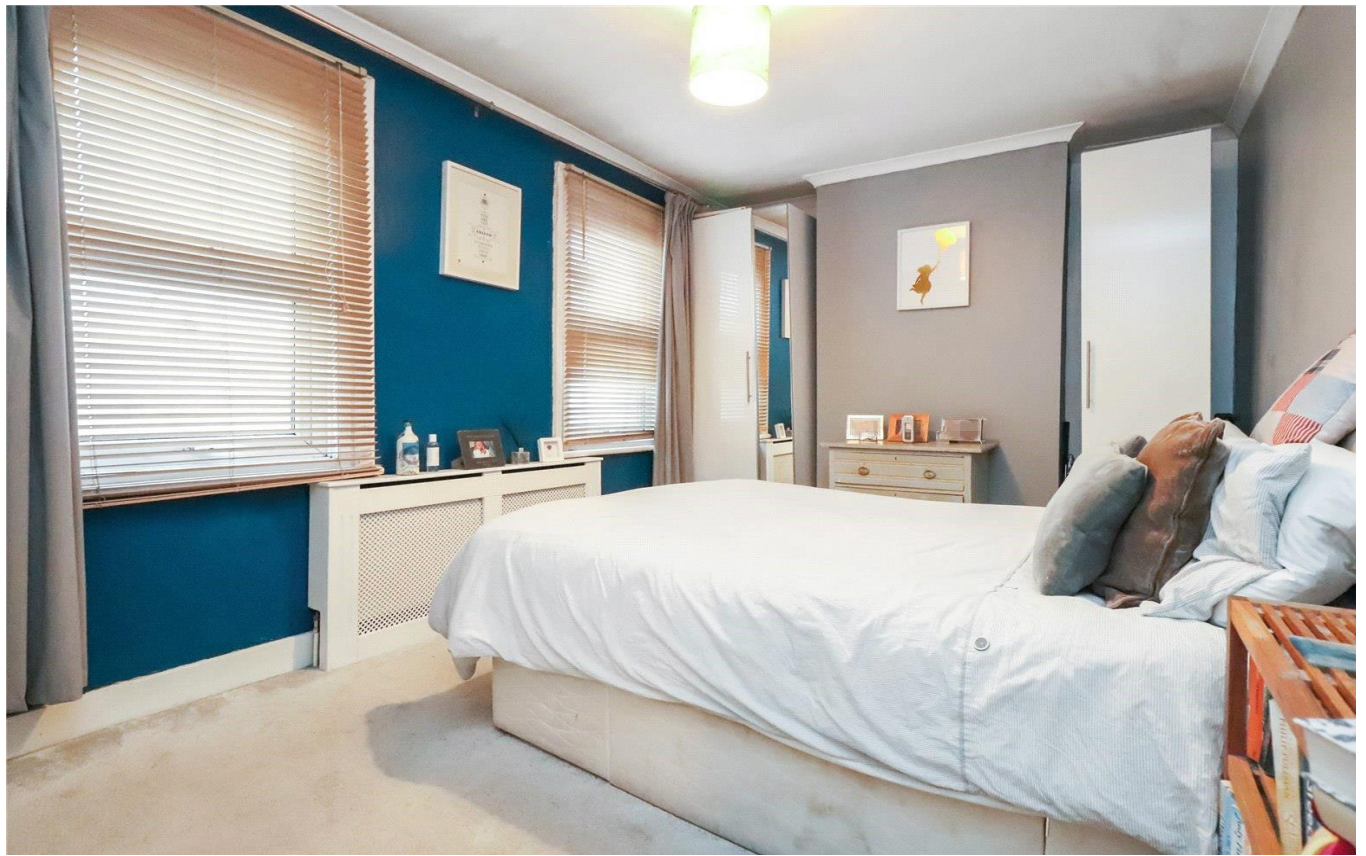
Bedroom 2 (ground floor) 3.8m x 2.36m (12'6" x 7'9") Double glazed window to rear, radiator, wood laminate flooring

Bedroom 3 (first floor) 3.2m x 2.29m (10'6" x 7'6") Double glazed window to rear, radiator, borrowed light window, carpet

Bathroom (first floor) Borrowed light window, panelled bath with mixer tap and shower attachment, pedestal wash hand basin, low level wc, radiator, extractor fan, vinyl flooring, part tiled walls

Exterior

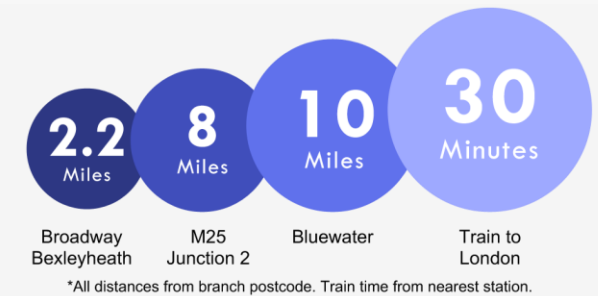
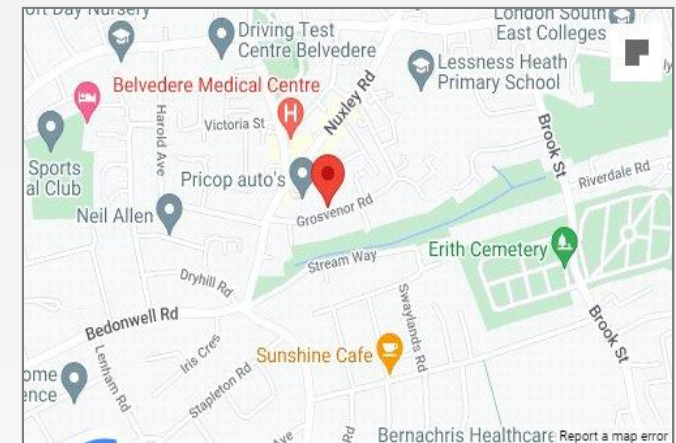
Garden Approx 200'. Mainly laid to lawn, patio area, shed, outside tap





Property Location

Grosvenor Road, Belvedere, DA17 5JY



Additional Information

At the heart of Belvedere is Nuxley Village – where you'll find shops, pubs, restaurants and the Robinson Jackson branch. Explore a little further and you'll find Lesnes Abbey, with its historic monastic ruins and formal gardens, and Bostall Woods with its protected bluebell fields and ancient trees.

Belvedere residents will be a manageable walk or one stop on the train line away from Abbey Wood's Crossrail station.

- Council Tax: C
- EPC Rating: D

**FOR MORE INFORMATION
CONTACT US TODAY.**

01322 441010
Robinson Jackson
61 Nuxley Road,
Belvedere,
Kent DA17 5JN
belvedere@robinson-jackson.com

