



Wynell Road | London, SE23 2LN



2



1



1

Offers in excess of £400,000 To be advised

ROBINSON-JACKSON
Our service will *move* you

Wynell Road, London

A spacious ground floor split level modern purpose-built maisonette with two double bedrooms, walking distance from Forest Hill Station

Property Features

- Council Tax: B
- Two Double Bedrooms
- Modern Purpose-Built Maisonette
- Leasehold
- Ground Floor
- Split Level
- Direct Access to Rear Garden
- Double Glazing
- Laminate Flooring Where Stated



Interior

Entrance Hall Laminate flooring, radiator

Lounge Double glazed doors leading to garden, built in cupboards, laminate flooring, feature fireplace, radiator

Kitchen Double glazed windows to front, range of wall and base units, laminate flooring, cupboard space, integrated stainless steel oven with hob, space for fridge freezer and washing machine, tiled flooring

Master Bedroom Double glazed windows to rear, built in cupboard, carpet, radiator

Master Bedroom Double glazed windows to front, built in cupboards, carpet, radiator

Bathroom Double glazed windows to front, panelled bath, shower screen, wash hand basin, low flush wc, tiled flooring, heated towel rail

Exterior

Direct access to east facing rear garden, mainly laid to lawn, shingle and decked seating area

Leasehold Information

Time remaining on lease: 99 years

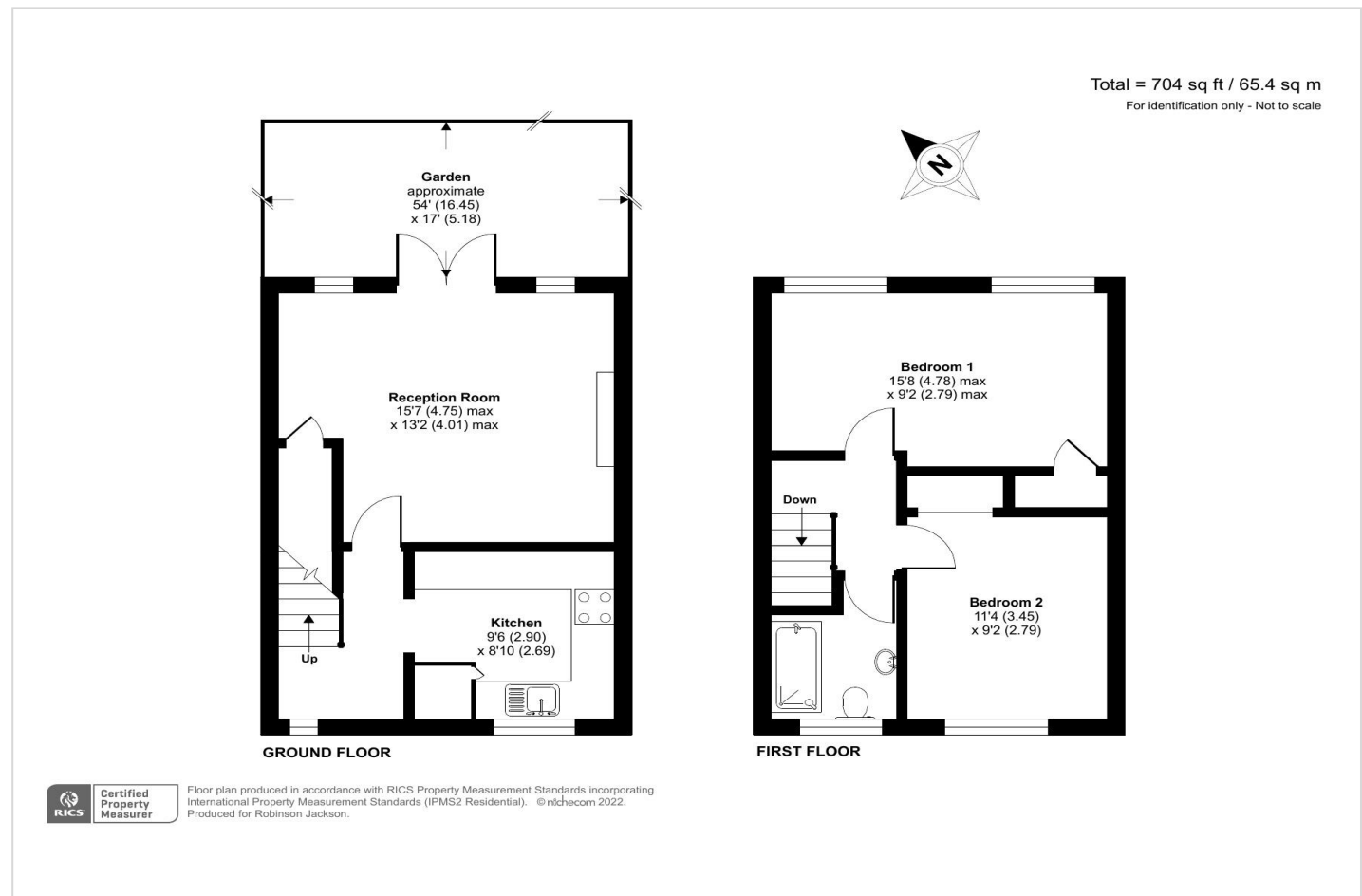
Ground Rent: £10 per annum

Service Charge: £500 per annum

Additional Information

Excellent location for Forest Hill Station

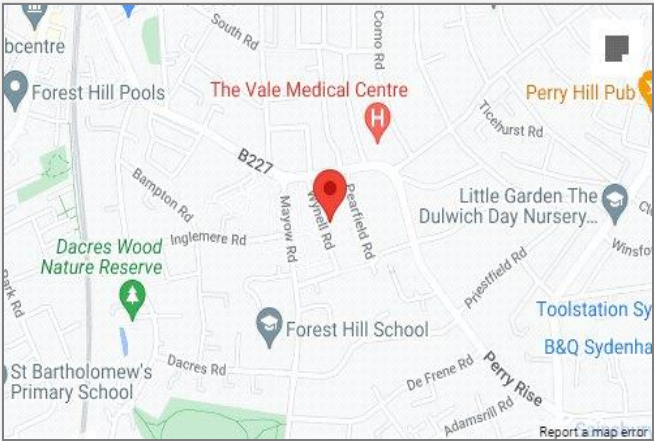
Conveniently located for local independent shops, eateries and bars, the award winning Mayow Park and Horniman Museum & Gardens





Property Location

Wynell Road, London, SE23 2LN



Horniman Museum & Gardens Lordship Lane Train to Canada Water Train to London Bridge

*All distances from SE23 3HB postcode. Train time from Forest Hill station.

FOR MORE INFORMATION CONTACT US TODAY.

020 8776 6660
Robinson Jackson
256 Kirkdale,
Sydenham,
London SE26 4NL
sydenham@robinson-jackson.com



These particulars do not form part of an offer or contract and must not be relied upon as statements or representation of fact. Any areas, measurements, journey times or distances are approximate. The text, images, photographs and plans are for guidance only and are not necessarily comprehensive. It should not be assumed that the property has all necessary planning, building regulation or other consents and we have not tested any services, equipment or facilities. References to tenure are based on information supplied by the seller. Buyer should verify all information themselves by inspection or otherwise prior to a legal commitment to purchase. Photos and images are subject to copyright.