



Irving Walk | Swanscombe, Kent, DA10 0ER



3



1



1

Asking Price £325,000

Freehold

ROBINSON-JACKSON
Our service will *move* you

Irving Walk, Swanscombe

Robinson Jackson are delighted to present this three bedroom family home in Swanscombe. The property features a generously sized open plan living/dining area, three bedrooms with first floor bathroom and 40ft garden. There is also residents parking to rear. The property is situated within 2.2 miles of Bluewater shopping centre, and within close proximity of Swanscombe station and Ebbsfleet International Station. Call our Robinson Jackson team to arrange your viewing.

Property Features

- Three bedrooms
- First floor bathroom
- 40ft rear garden
- Front garden
- Open plan living/dining area
- Conveniently located for Swanscombe station (approx. 1.1 miles) and Ebbsfleet International station (approx. 1.9 miles)



Interior

Lounge: 6.83m (22'5") x 4.01m (13'2") narrowing to 2.8m (9'2") Double glazed window to front. Double glazed window to rear. Carpet.

Kitchen: 2.92m x 2.57m (9'7" x 8'5") Double glazed window to rear. Range of fitted wall and base units with work surfaces over. Stainless steel sink with drainer. Plumbed for washing machine. Space for fridge freezer. Double glazed French doors to garden. Tiled flooring.

Separate WC: Low level WC. Storage cupboard. Tiled flooring.

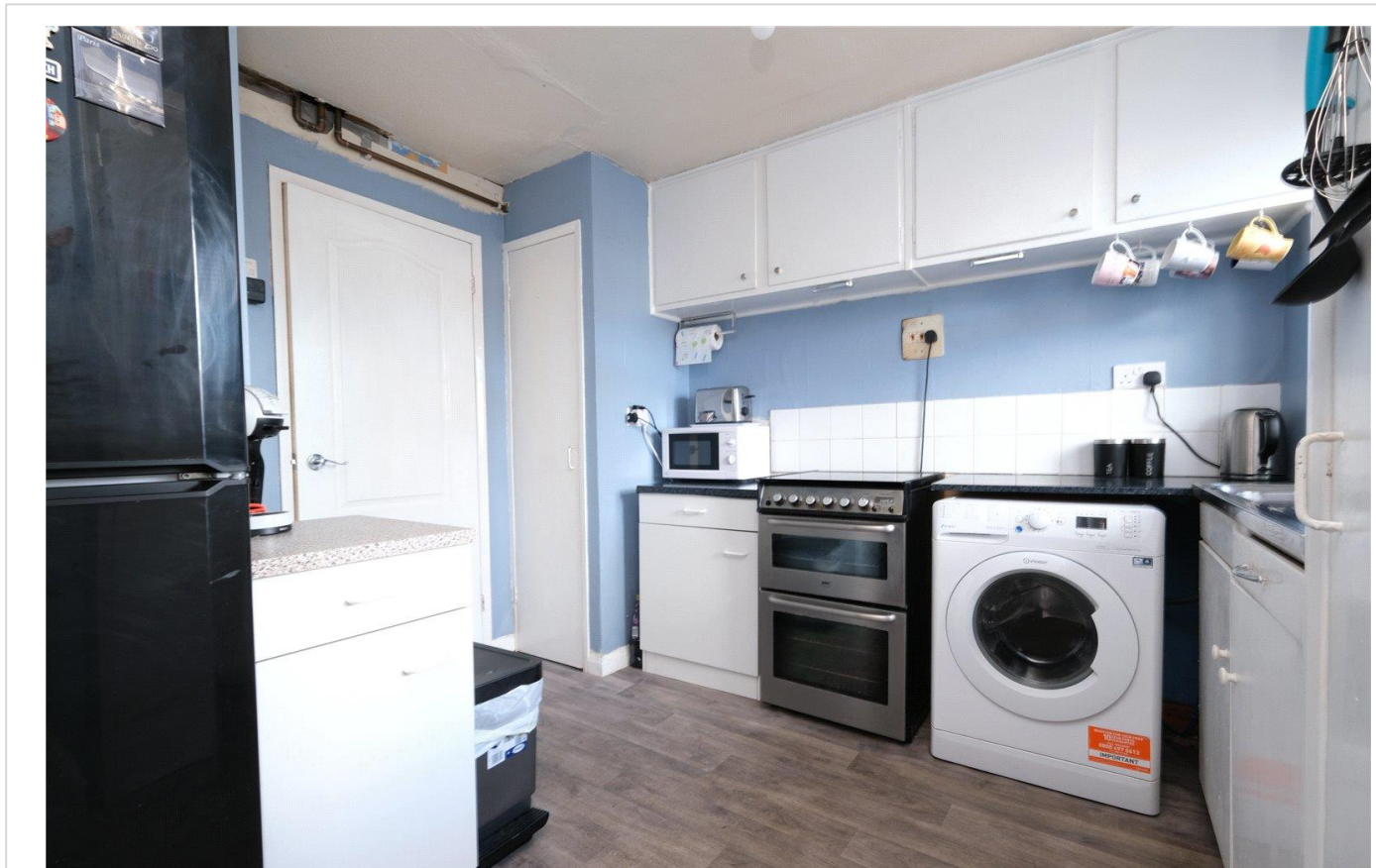
Landing: Loft access. Airing cupboard. Carpet.

Bedroom 1: 4.01m x 3.15m (13'2" x 10'4") Double glazed window to rear. Radiator. Carpet.

Bedroom 2: 4.17m x 2.64m (13'8" x 8'8") Double glazed window to front. Radiator. Carpet.

Bedroom 3: 2.62m x 2.3m (8'7" x 7'7") Double glazed window to front. Radiator. Carpet.

Bathroom: Double glazed frosted window to rear. Low level WC. Wash hand basin. Panelled bath with electric shower. Local tiling. Vinyl flooring.





Exterior

Rear Garden: Approx. 41ft. Mainly paved and artificial lawn. Brick built shed. Rear gated access.

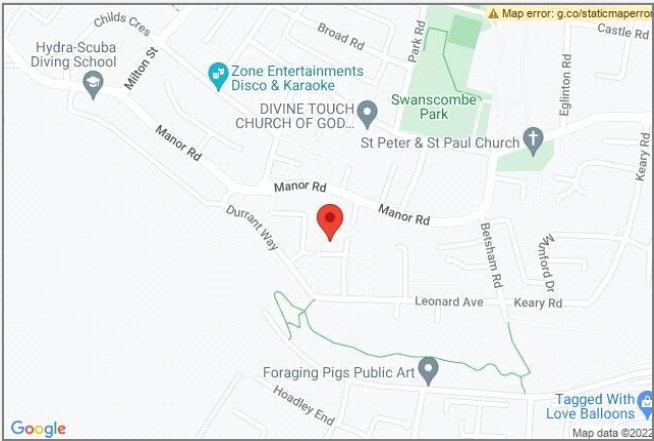
Additional Information

Dartford Borough Council - Tax Band C

Total floor area - 85 sq. metres

Property Location

Irving Walk, Swanscombe, Kent, DA10 0ER



**FOR MORE INFORMATION
CONTACT US TODAY.**

01322 624440
Robinson Jackson
39 High Street,
Swanscombe
Kent,
DA10 0AG
swanscombe@robinson-jackson.com

