



# Thong Lane

Shorne | Gravesend | DA12 4AD



# Thong Lane

Shorne, Gravesend, DA12 4AD

Guide Price £500,000 - £525,000  
Freehold

This rarely available 2-bedroom semi-detached home is uniquely positioned with views over the fields. Also benefitting from a detached barn conversion annexe!!

## Benefitting from:

- Unique and Rarely Available
- Character Home
- 4 Piece Family Bathroom
- Gated Driveway for 5/6 Cars
- 130ft L-Shaped Garden
- Views of Fields
- Detached Barn Conversion Annex
- Council Tax: D
- EPC Rating: E



## Accommodation

**Entrance Hall:** 4.14m x 3.2m (13'7" x 10'6") Double glazed door into entrance hall. Carpet. Radiator. Built-in storage cupboard. Cupboard housing boiler and appliances. Loft hatch via pull down ladder. Door to: -

**Lounge:** 4.4m x 4.24m (14'5" x 13'11") Double glazed window to front. Radiator. Carpet. Log burner with brick-built surround.

**Dining Room:** 4.2m x 3.58m (13'9" x 11'9") Double glazed window to side. Radiator. Carpet. Built-in fireplace with brick-built surround. Under-stairs storage. Stairs to first floor.

**Kitchen:** 5.03m x 2.95m (16'6" x 9'8") Double glazed window to side. Radiator. Spotlights. Wall and base units with roll top work surface over. Sink unit with mixer tap over. Tiled splash back. Integrated double oven, fridge and freezer. Island unit with four ring electric hob. Space for appliances. Carpet. Opening into dining room.

**First Floor Landing:** Doors to: -

**Bedroom 1:** 4.17m x 4.17m (13'8" x 13'8") Double glazed window to front with views of fields. Radiator. Built-in storage cupboard. Carpet.

**Bedroom 2:** 3.56m x 3.23m (11'8" x 10'7") Double glazed window to rear. Radiator. Built-in storage. Carpet.

### BARN CONVERSION

**Entrance Hall:** 2.5m x 2.41m (8'2" x 7'11") Tiled flooring. Spotlights. Access to ground floor w.c. Stairs to first floor. Built-in storage cupboard housing tank.

**GF Bathroom:** 2.84m x 2.62m (9'4" x 8'7") Double glazed frosted window to side. Suite comprising walk-in shower with tiled surround. Panelled bath with shower over. Vanity sink unit with storage under. Low level w.c. Carpet. Heated towel rail. Partly tiled walls.

**Bathroom:** 3.2m x 1.73m (10'6" x 5'8") Tiled flooring. Heated towel rail. Double glazed window to rear. Low level w.c. Pedestal wash and basin with tiled splash back. Shower with tiled surround. Built-in storage cupboard. Spotlights.





**Bedroom:** 8.6m x 3.45m (28'3" x 11'4") Carpet. Spotlights. Single glazed window onto Juliet balcony to rear. Door to front.

**Kitchen:** 4.37m x 4.93m (14'4" x 16'2") Wall and base units with roll top work surface. Stainless steel sink unit with mixer tap. Tiled splash back. Space for appliances. Carpet.

## Exterior

Rear Garden: Approx. 130ft: L-Shaped. Mainly laid to lawn. Patio area. Views of fields.

Parking: Gated driveway for 5/6 vehicles.

## Additional Information

Thong Lane is on the edge Riverview Park is a sought-after residential area built back in the 1960's. The area is ideally located with schools, shops, Cascades Sports Centre and Southern Valley Golf Club all within walking distance. The A2 motorway is only a short drive away, with great access to London. There are also regular buses into Gravesend Town and British Rail Station offering services to Ebbsfleet International. An ideal area to bring up a young and growing family.

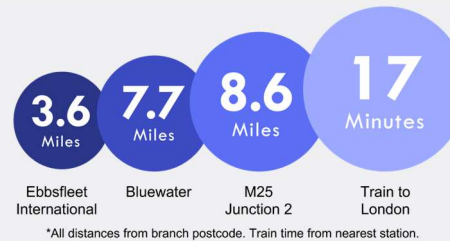




## Important Notice

These particulars do not form part of an offer or contract and must not be relied upon as statements or representation of fact. Any areas, measurements, journey times or distances are approximate. The text, images, photographs and plans are for guidance only and are not necessarily comprehensive. It should not be assumed that the property has all necessary planning, building regulation or other consents and we have not tested any services, equipment or facilities. References to tenure are based on information supplied by the seller. Buyer should verify all information themselves by inspection or otherwise prior to a legal commitment to purchase. Photos and images are subject to copyright.

## Location



(All distances & times are approximates)

## FOR MORE INFORMATION CONTACT US TODAY.

Andy Plaistowe - Branch Partner

01474 333111

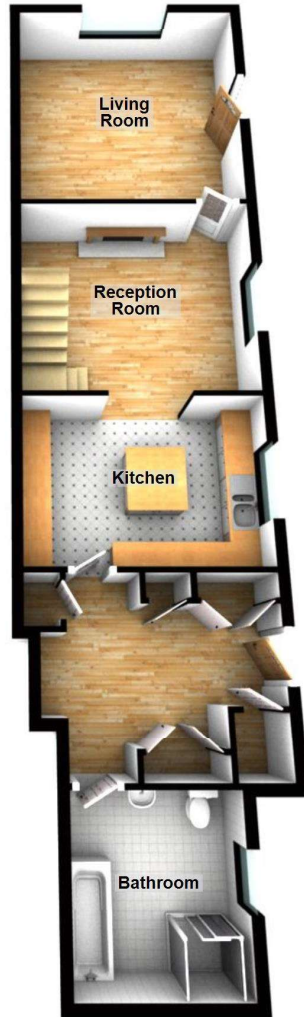
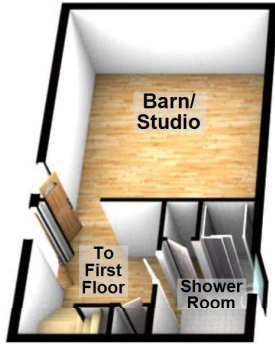
Robinson Michael & Jackson  
21A & B King Street,  
Gravesend,  
Kent DA12 2EB

[gravesend@robinson-jackson.com](mailto:gravesend@robinson-jackson.com)

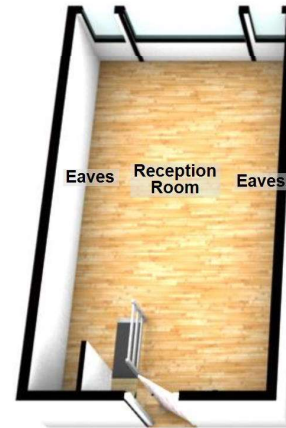
SALES | MORTGAGES | LEGALS

**ROBINSON MICHAEL & JACKSON**

**Ground Floor**  
Approx. 1129.6 sq. feet



**First Floor**  
Approx. 766.2 sq. feet



Total area: approx. 1895.7 sq. feet

Please be advised this plan is offered for marketing purposes only. It can not be relied upon for exact or precise measurements, angles, window or door openings. Whilst every effort is made to ensure the accuracy the company or provider accepts no responsibility for the content.  
Plan produced using PlanUp.

